

NEW JERSEY ADULT MOSQUITO SURVEILLANCE
Report for 24 October to 6 November 2010, CDC Week 44
Prepared by Lisa M. Reed, Scott Crans and Mark Robson
Center for Vector Biology

This New Jersey Agricultural Experiment Station report is supported by Rutgers University, Hatch funds, funding from the NJ State Mosquito Control Commission and with the participation of the 21 county mosquito control agencies of New Jersey.

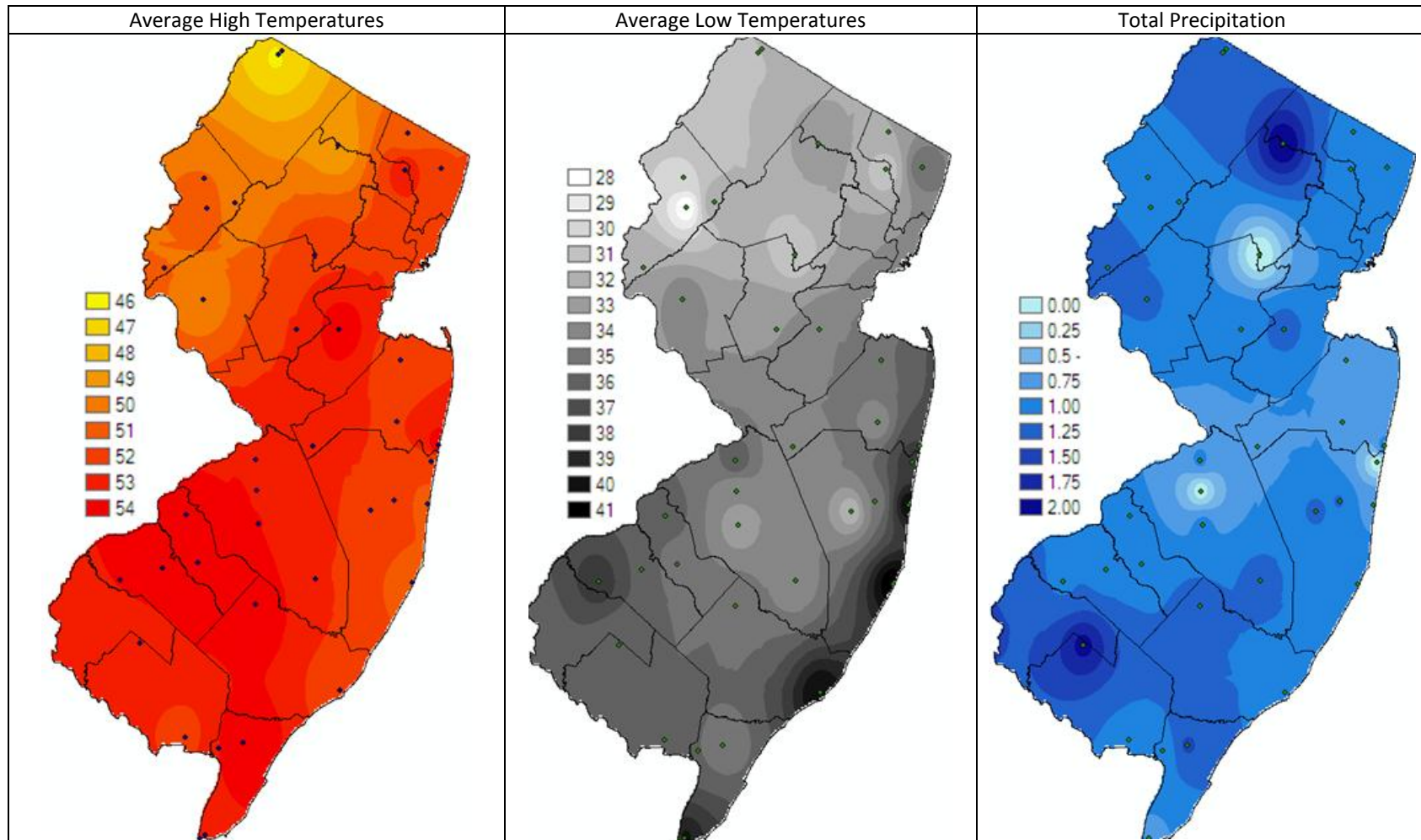
Summary table – Week 44

Region	<i>Aedes vexans</i>			<i>Culex Mix</i>			<i>Coquillettidia perturbans</i>			<i>Aedes sollicitans</i>		
	This Week	Average*	Increase	This Week	Average*	Increase	This Week	Average*	Increase	This Week	Average*	Increase
Agricultural		<0.01			0.01			0.00			0.00	
Coastal		0.00			0.04			0.00			0.00	
Delaware Bayshore		0.02			0.03			0.00			0.28	
Delaware River Basin		0.00			0.00			0.00			0.00	
New York Metro		<0.01			0.03			0.00			0.00	
North Central Rural		0.00						0.00			0.00	
Northwest Rural	0.37	<0.01	4		0.00		0.00	0.00		0.00	0.00	
Philadelphia Metro		0.06			0.14			0.00			0.00	
Pinelands		<0.01			0.05			0.00			0.00	
Suburban Corridor		<0.01			0.09			0.00			0.00	

*Averages represent data from, at most, the previous 5 years. Increase is a scale of current values from historical values where no difference or a decrease is represented by 0 (blue), up to 50% greater difference by 1 (green), up to 100% greater difference by 2 (yellow), up to 150% greater difference by 3 (orange) and greater than 150% increase by 4 (red). White cells in the increase column denote increases from an historic zero and thus no value can be appropriately given.

State Summary: Counties have stopped for the season. A blank indicates no data reported. One county sent in data for the previous week's report that included data for the current week. Historical data is the last week of data and this is the last report of the season.

Climate Factors

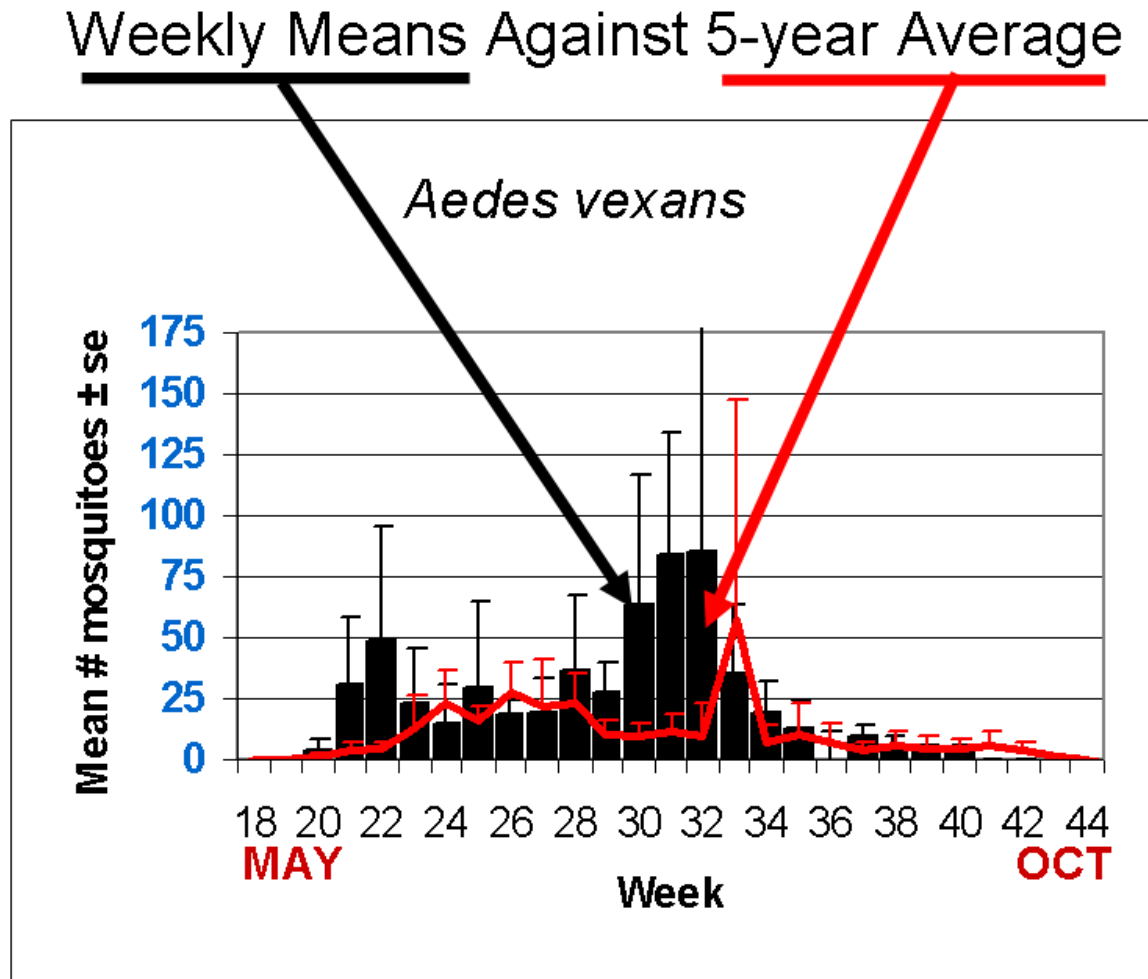


The three figures show the interpolation of average maximum and minimum temperature and total precipitation for November 1-11, 2010 in New Jersey. Data points are from ~40 weather stations maintained through the New Jersey Weather & Climate Network and the State Climatologist. Interpolation between points was performed using ArcMap 9.2.

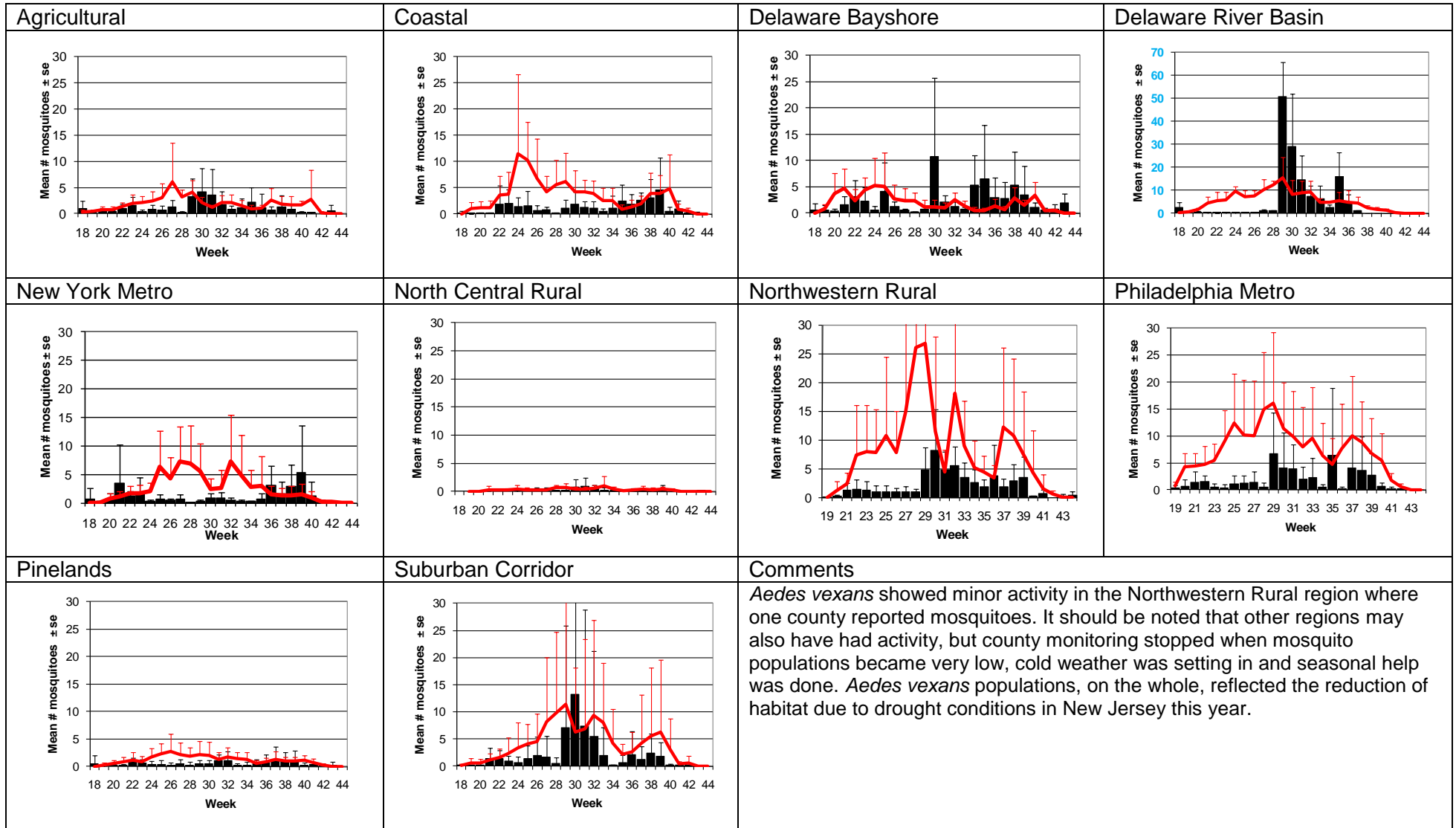
Average daytime and nighttime temperatures increased slightly from the first week of November. Daytime temperatures were highest in the Pinelands to the center of the state while nighttime temperatures were warmest along the coast. Precipitation increased in minor amounts.

The Species Graphs: The species graph pages include a graph with two plots for each of the ten regions defined on the first page (Agricultural, Coastal, Delaware Bayshore, Delaware River, New York Metro, North-Central, Northwestern, Philadelphia Metro, Pinelands, and Suburban Corridor). Below is an example of one graph from one species within one region. The bar plot show the average number of mosquitoes per trap within the region (weekly means) and line plots show the historical trend as the average number of mosquitoes from the previous 5 years (5-year average). In general, historical data are running means from the previous 5 years, but on occasion, will include data from fewer years. Adjustments are made to account for year discrepancies. Data for this week are from Sussex County. Note: Previous week's data are from Cape May, Hunterdon, Monmouth, Salem, and Sussex counties.

Participation has concluded for the year.

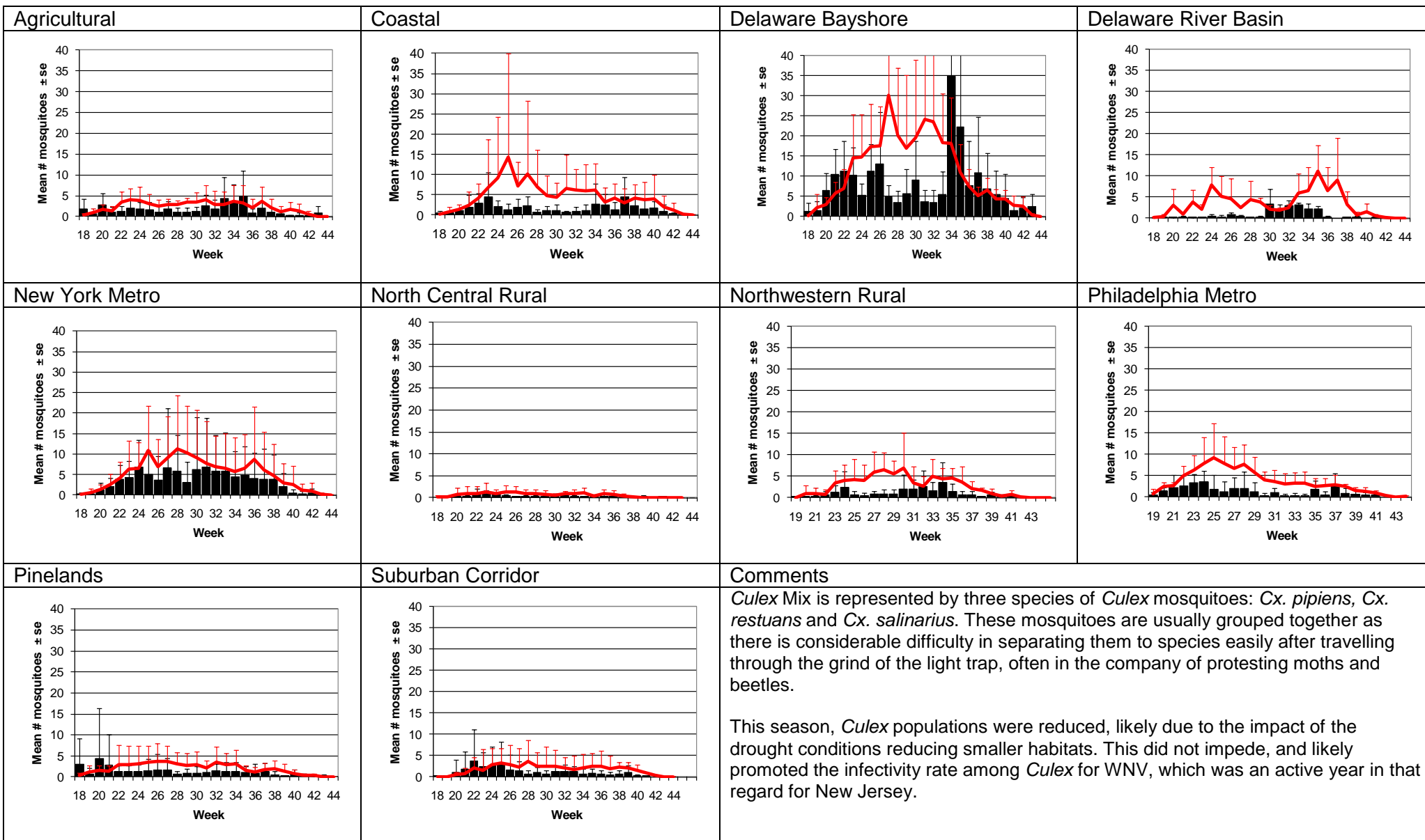


Aedes vexans - Fresh Floodwater Species Multivoltine Aedine (*Ae. vexans* Type)

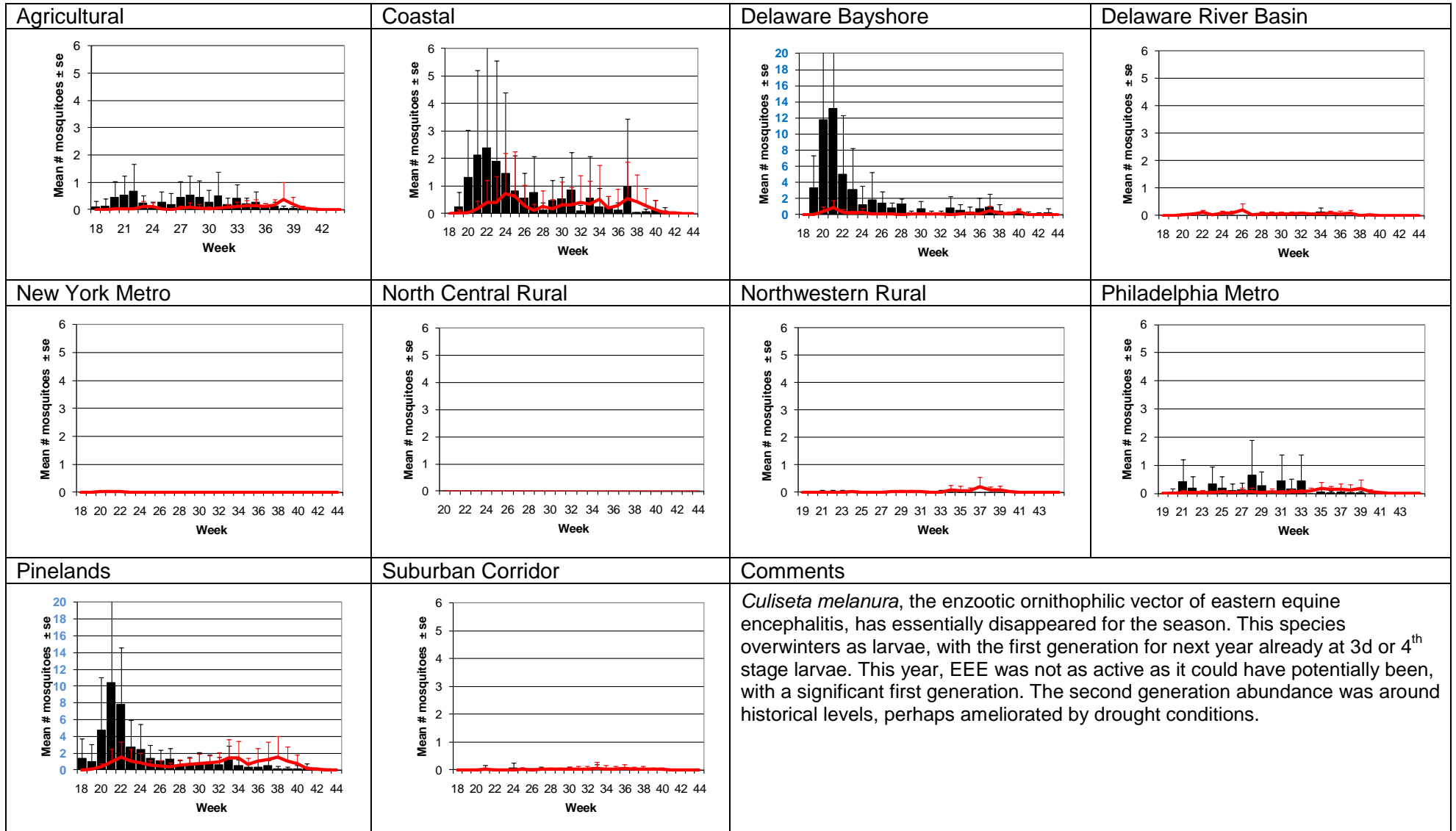


Culex Mix – Permanent Water Species

Multivoltine *Culex/Anopheles* (*Cx. pipiens* Type)

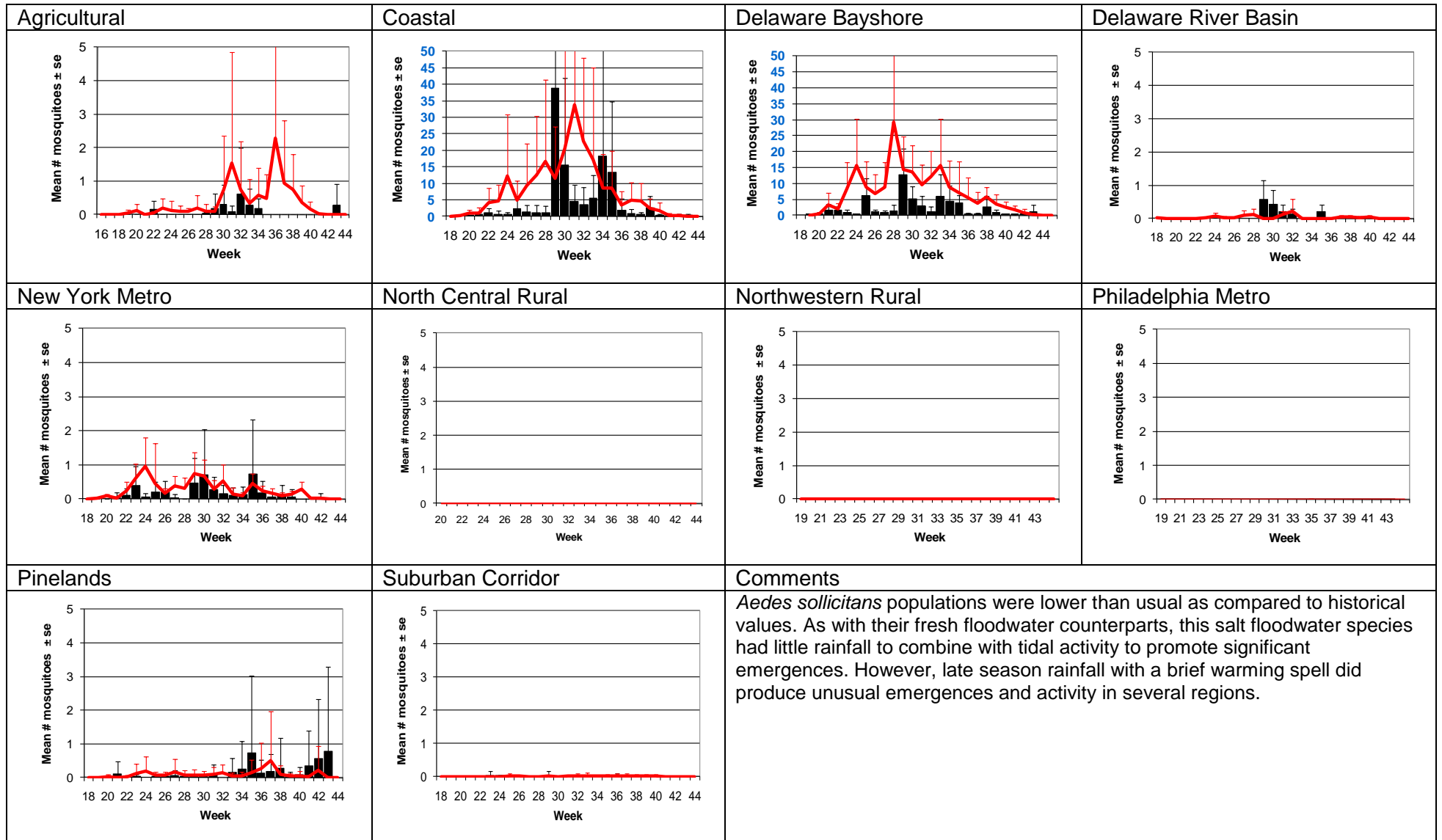


Culiseta melanura – Miscellaneous Group Unique (*Cs. melanura* Type)



Aedes sollicitans - Salt Floodwater Species

Multivoltine Aedine (*Ae. sollicitans* Type)

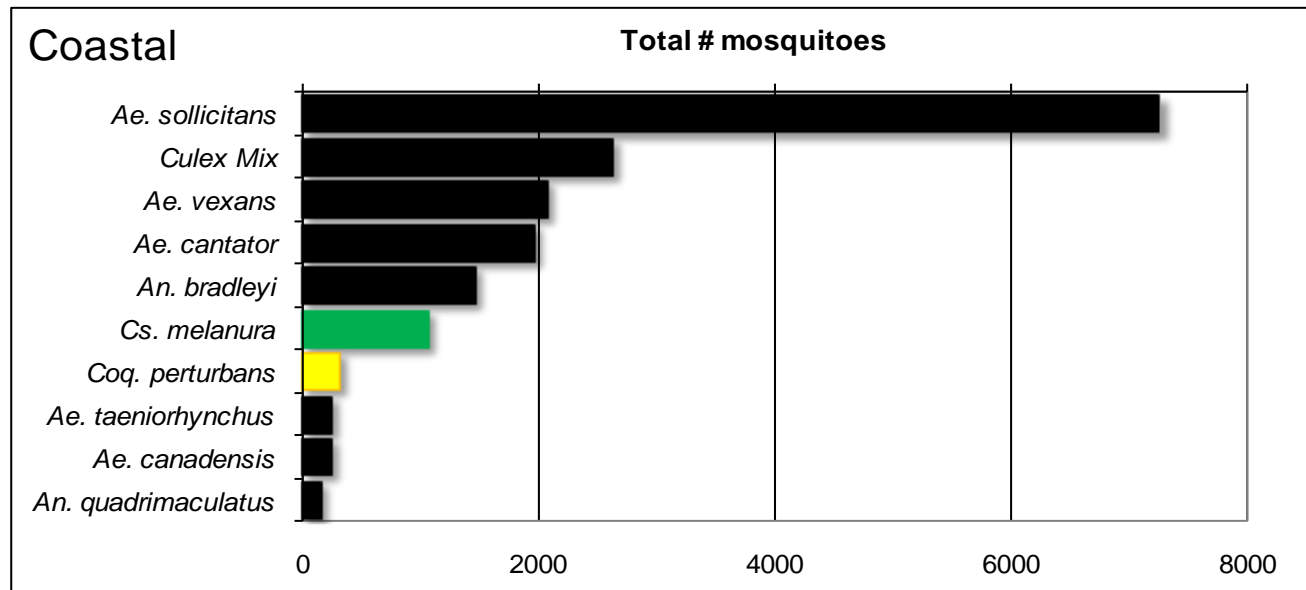
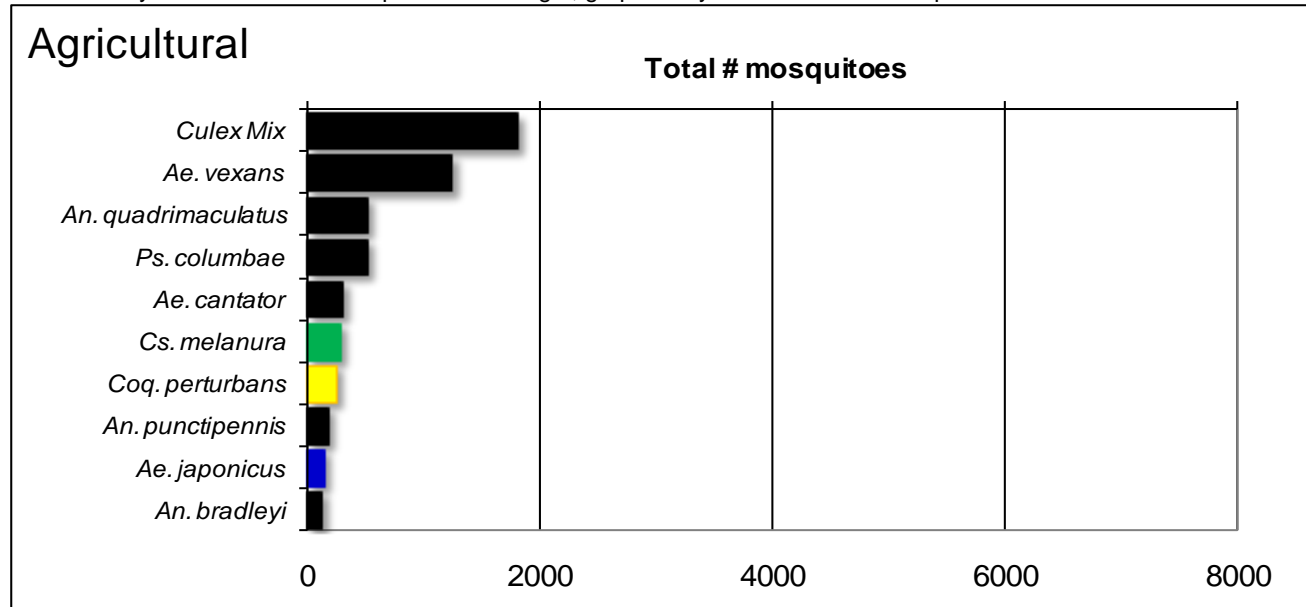


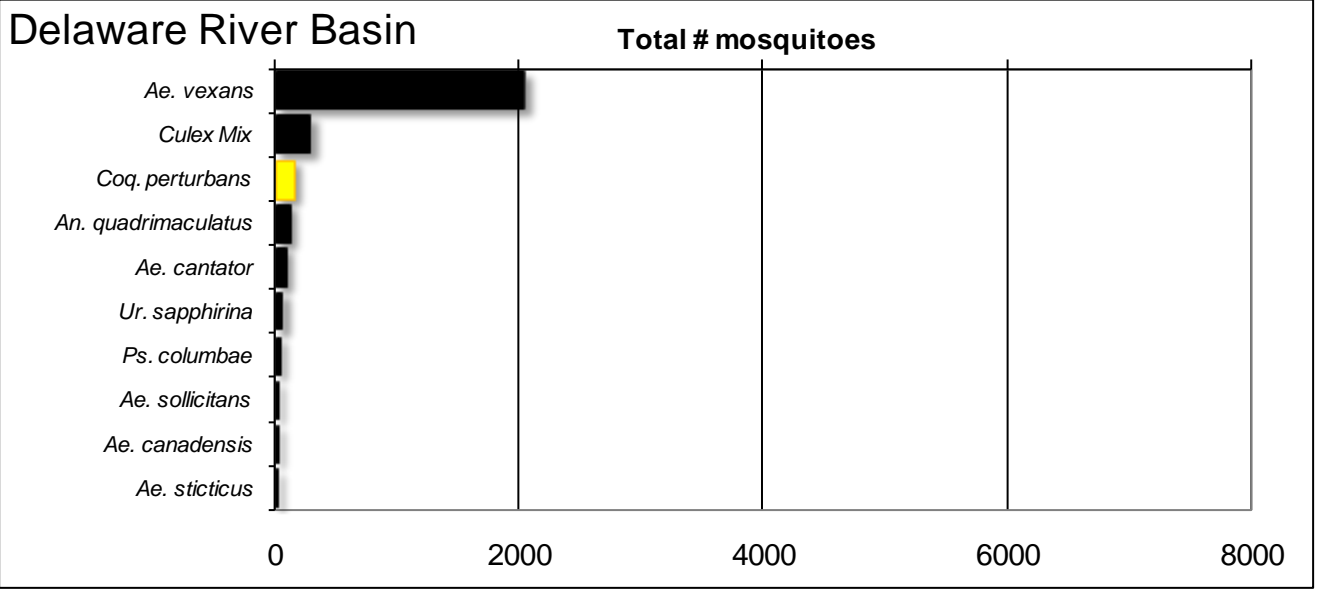
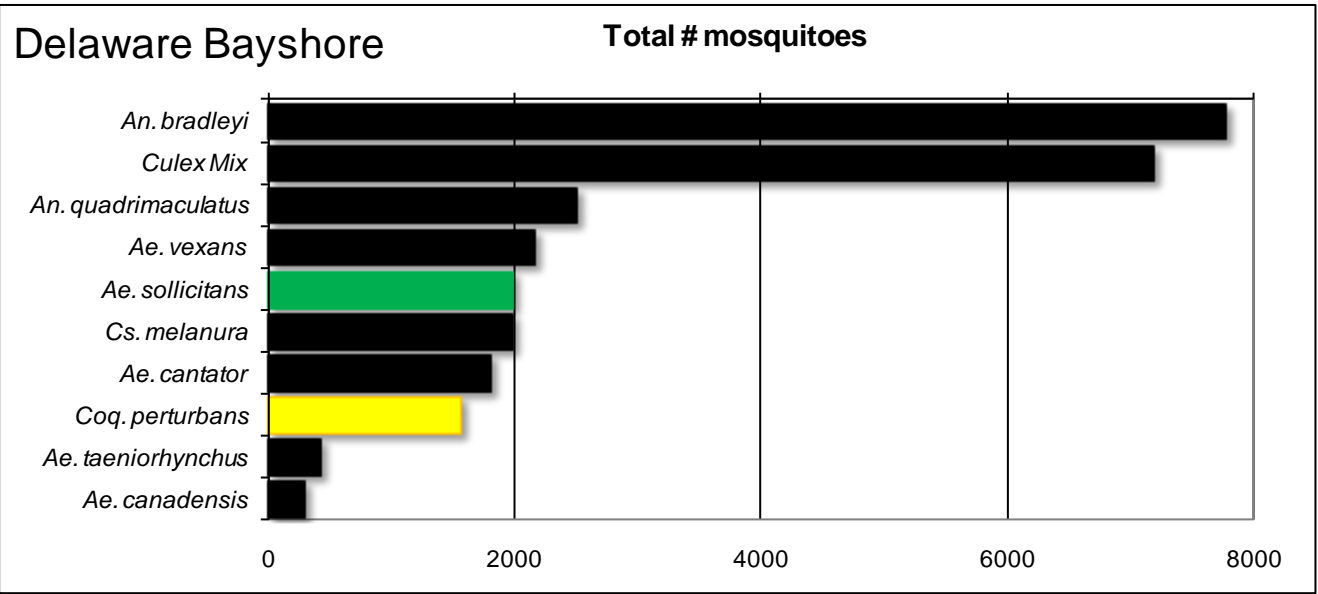
WNV

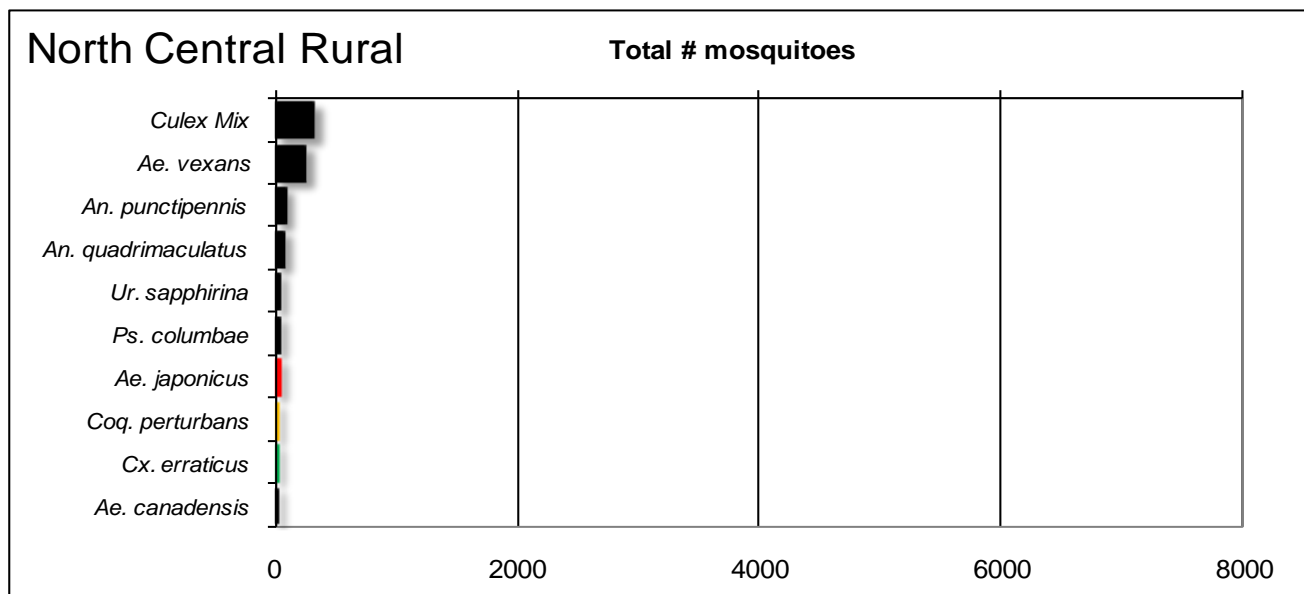
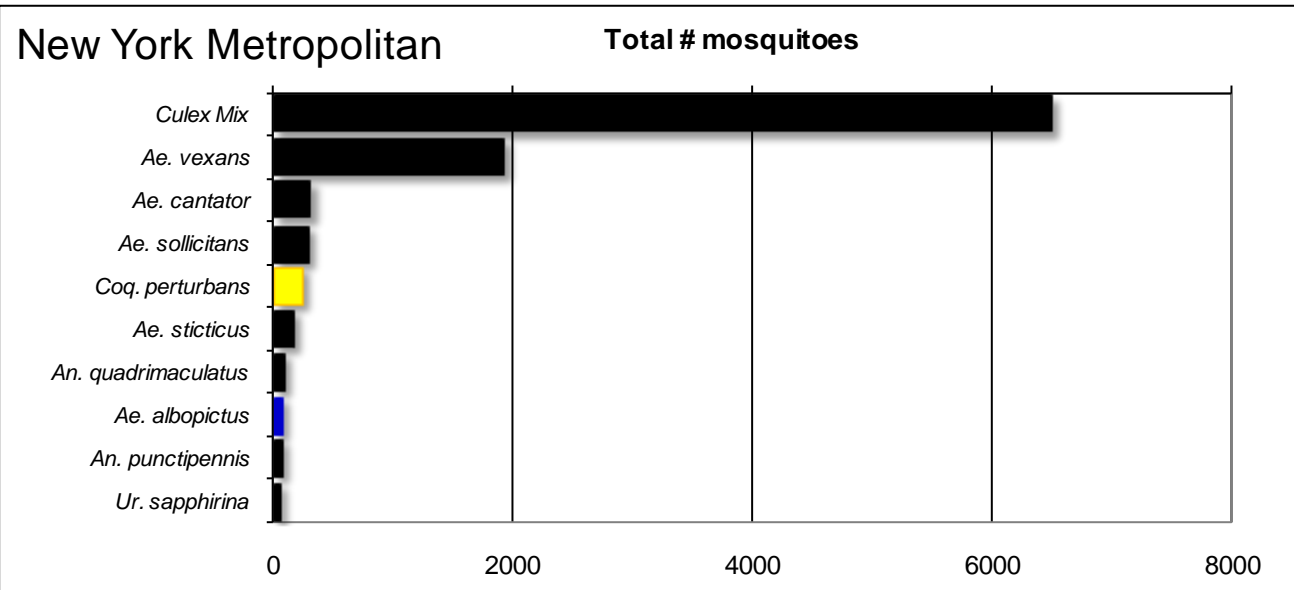
EEE

Top Ten Cumulative Mosquito Species/Region - ■ *Ae. albopictus*, ■ *Ae. japonicus* (invasives); ■ *Cs. melanura* or *Cx. erraticus*
■ *Coq. perturbans*

Note: In early season when fewer species are caught, graphs may show less than ten species listed.

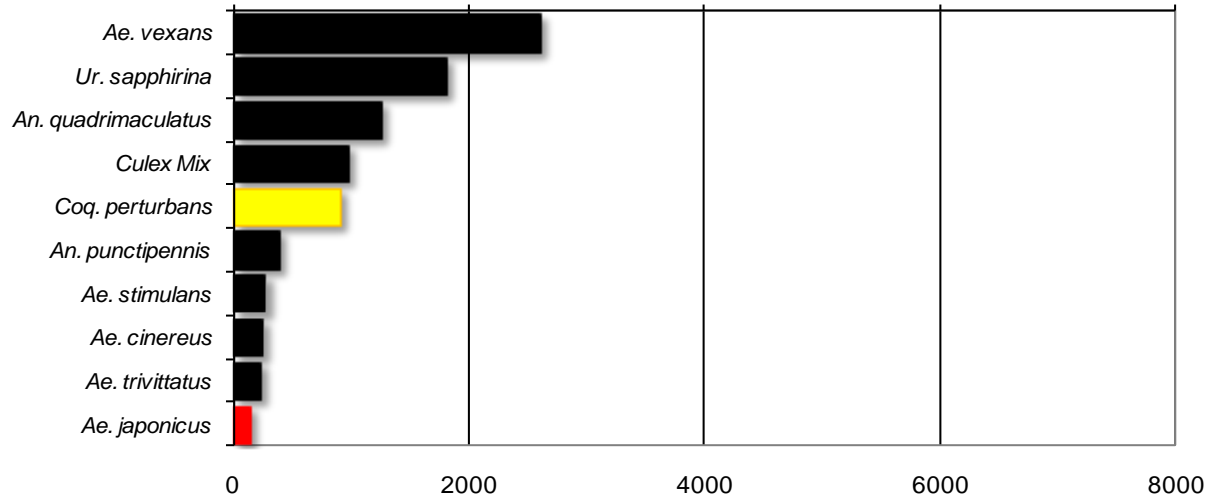






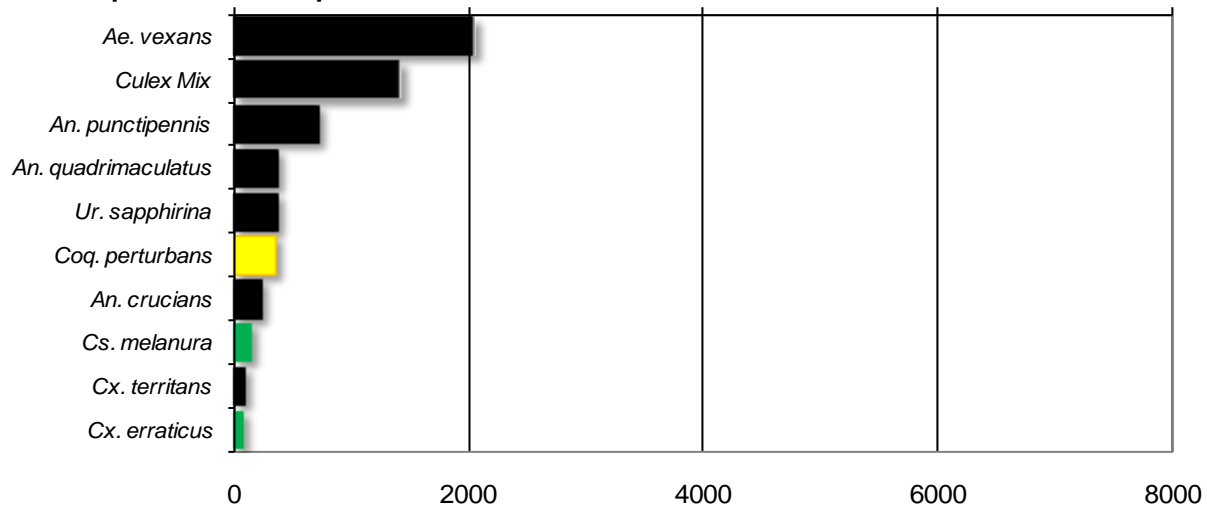
Northwest Rural

Total # mosquitoes



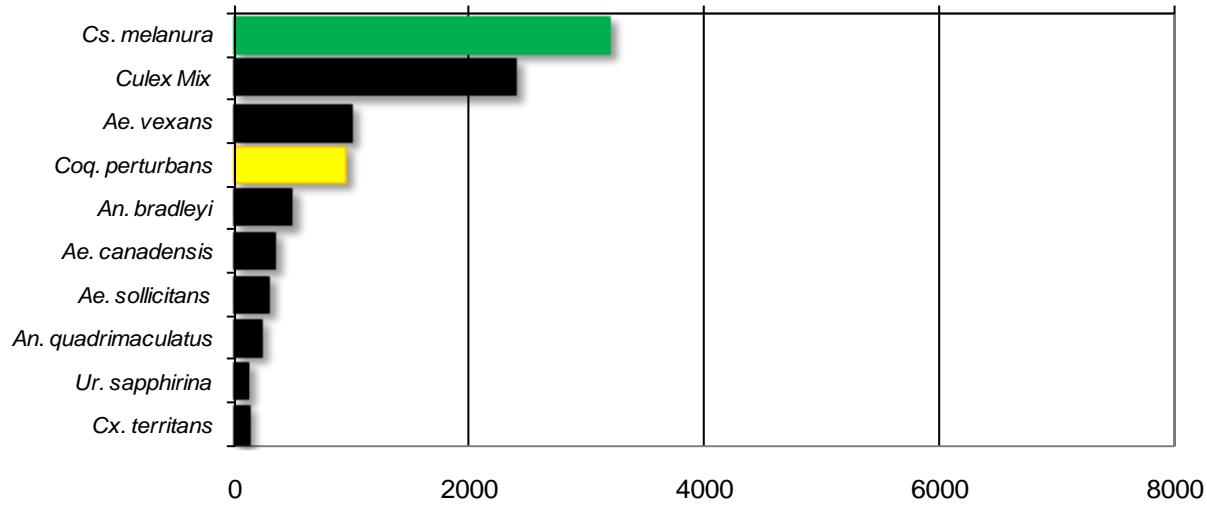
Philadelphia Metropolitan

Total # mosquitoes



Pinelands

Total # mosquitoes



Suburban Corridor

Total # mosquitoes

