

NEW JERSEY ADULT MOSQUITO SURVEILLANCE

Report for 6 September to 12 September 2015, CDC Week 36

Prepared by Lisa M. Reed, Scott Crans and Mark Robson

Center for Vector Biology



This New Jersey Agricultural Experiment Station report is supported by Rutgers University, Hatch funds, funding from the NJ State Mosquito Control Commission and with the participation of the 21 county mosquito control agencies of New Jersey.

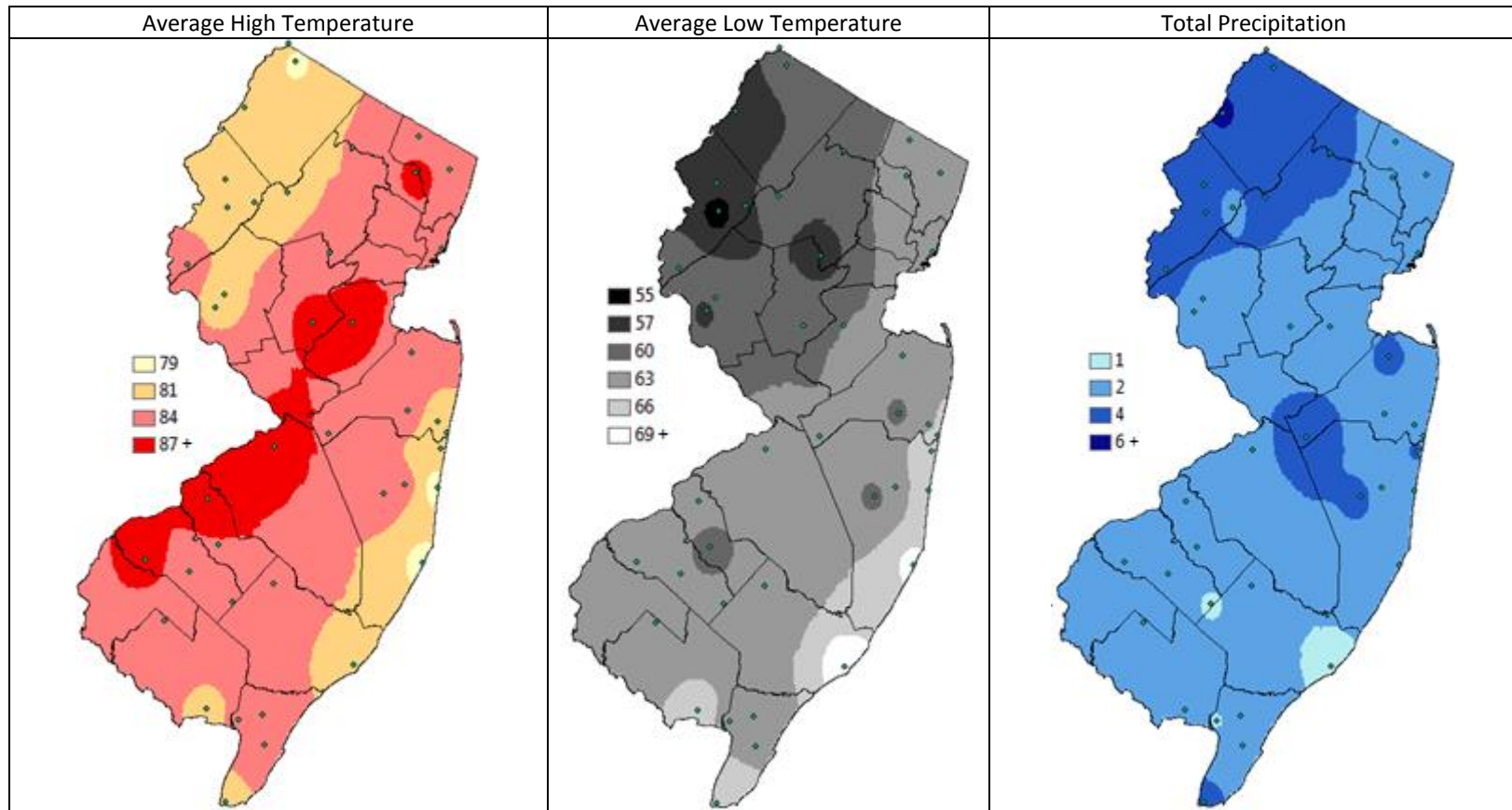
Summary Table – Week 36

Region	<i>Aedes vexans</i>			<i>Culex Mix</i>			<i>Coquillettidia perturbans</i>			<i>Aedes sollicitans</i>		
	This Week	Average*	Increase	This Week	Average*	Increase	This Week	Average*	Increase	This Week	Average*	Increase
Agricultural	0.74	3.03	0	0.88	5.56	0	0.00	0.03	0	0.00	0.09	0
Coastal	0.04	6.59	0	0.32	6.48	0	0.00	0.03	0	0.00	3.00	0
Delaware Bayshore	0.17	4.57	0	0.66	10.54	0	0.00	0.23	0	1.03	1.38	0
Delaware River Basin	nd		0	nd		0	nd		0	nd		0
New York Metro	0.20	2.15	0	2.94	4.52	0	0.00	0.05	0	0.66	0.23	4
North Central Rural	0.08	0.39	0	0.78	0.73	1	0.00	0.02	0	0.00	0.00	0
Northwest Rural	0.23	19.55	0	0.03	3.37	0	0.00	0.11	0	0.00	0.00	0
Philadelphia Metro	nd		0	nd		0	nd		0	nd		0
Pinelands	0.03	2.74	0	0.03	3.77	0	0.00	0.12	0	0.00	0.05	0
Suburban Corridor	0.37	5.39	0	0.34	0.89	0	0.00	2.70	0	0.00	0.01	0

*Averages represent data from, at most, the previous 5 years. Increase is a scale of current values from historical values where no difference or a decrease is represented by 0 (blue), up to 50% greater difference by 1 (green), up to 100% greater difference by 2 (yellow), up to 150% greater difference by 3 (orange) and greater than 150% increase by 4 (red). White cells in the increase column denote increases from an historic zero and thus no value can be appropriately given. nd=no data reported.

State Summary: For the dataset to date, *Coquillettidia perturbans* showed mildly elevated populations in the North Central Rural region and *Aedes sollicitans* showed significantly elevated populations in the New York Metropolitan region.

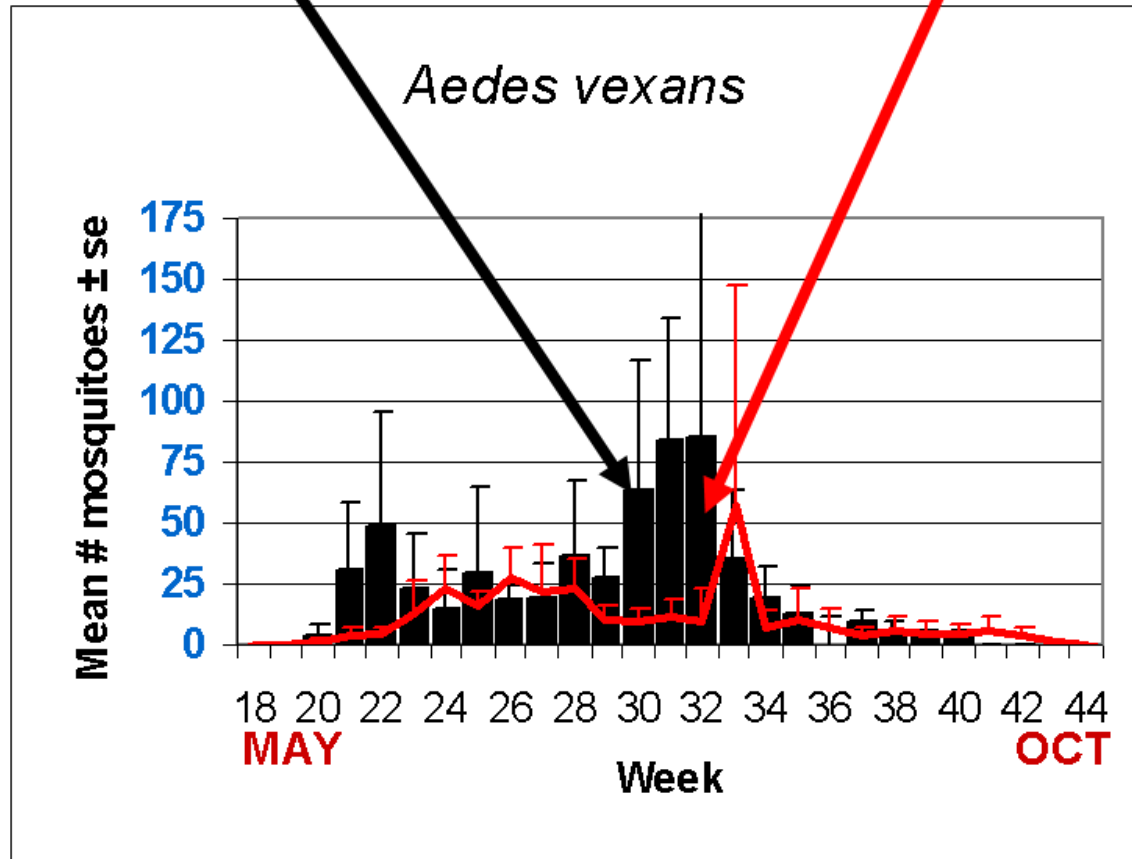
Climate Factors



The three figures show the interpolation of average maximum (°F) and minimum temperature (°F) and total precipitation (inches) for 30 days prior to 11 September 2015 in New Jersey. Data points are from about 39 weather stations maintained through the New Jersey Weather & Climate Network and the State Climatologist. Interpolation between points was performed using ArcMap 10.1.

The Species Graphs: The species graph pages include a graph with two plots for each of the ten regions defined on the first page (Agricultural, Coastal, Delaware Bayshore, Delaware River, New York Metro, North-Central, Northwestern, Philadelphia Metro, Pinelands, and Suburban Corridor). Below is an example of one graph from one species within one region. The bar plot show the average number of mosquitoes per trap within the region (weekly means) and line plots show the historical trend as the average number of mosquitoes from the previous 5 years (5-year average). In general, historical data are running means from the previous 5 years, but on occasion, will include data from fewer years. Adjustments are made to account for year discrepancies. Data for this week are from Cumberland, Monmouth, Morris, Union and Warren counties. Data for the previous week are from Bergen, Cape May, Monmouth, Morris, Ocean, Union and Warren counties.

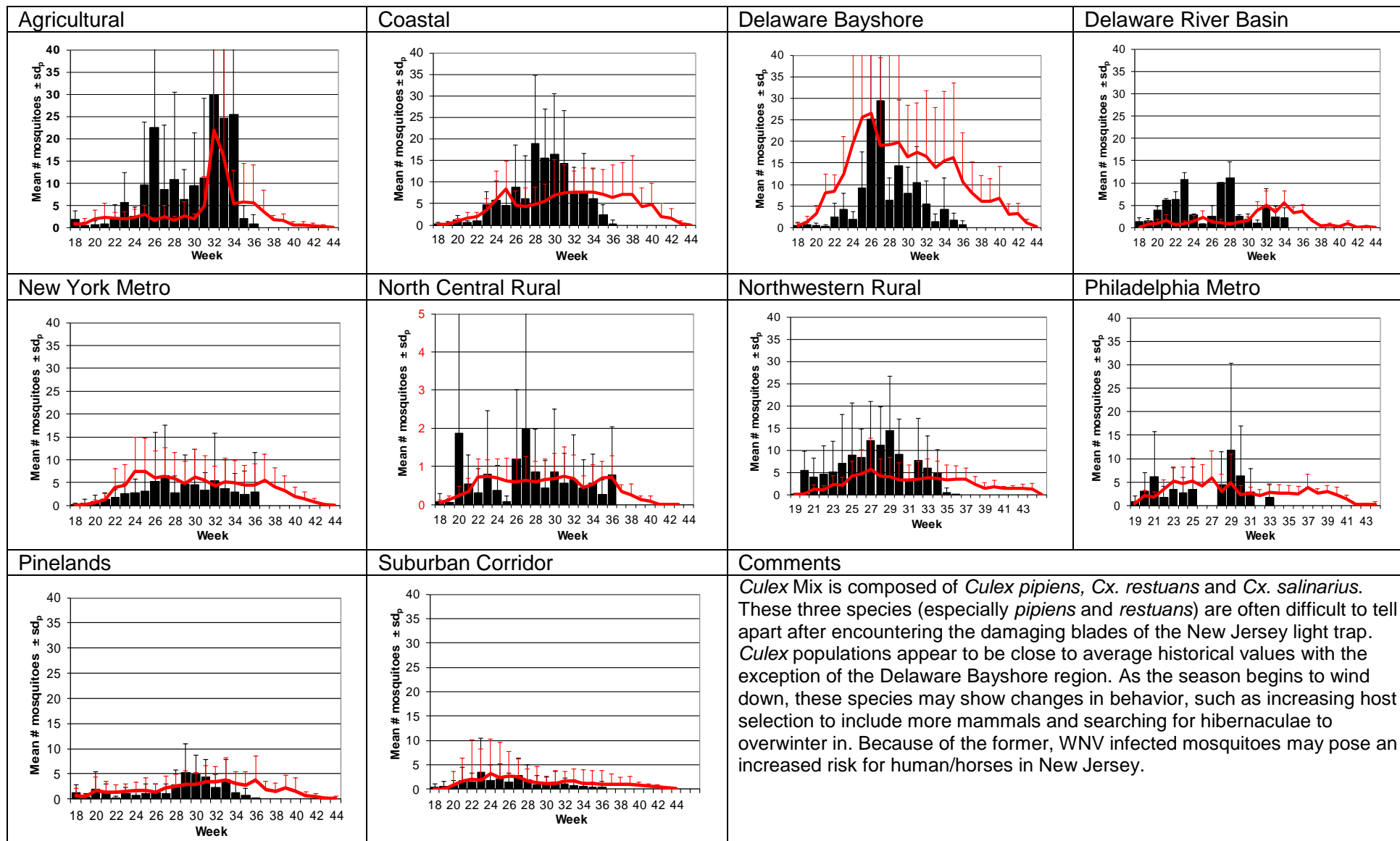
Weekly Means Against 5-year Average



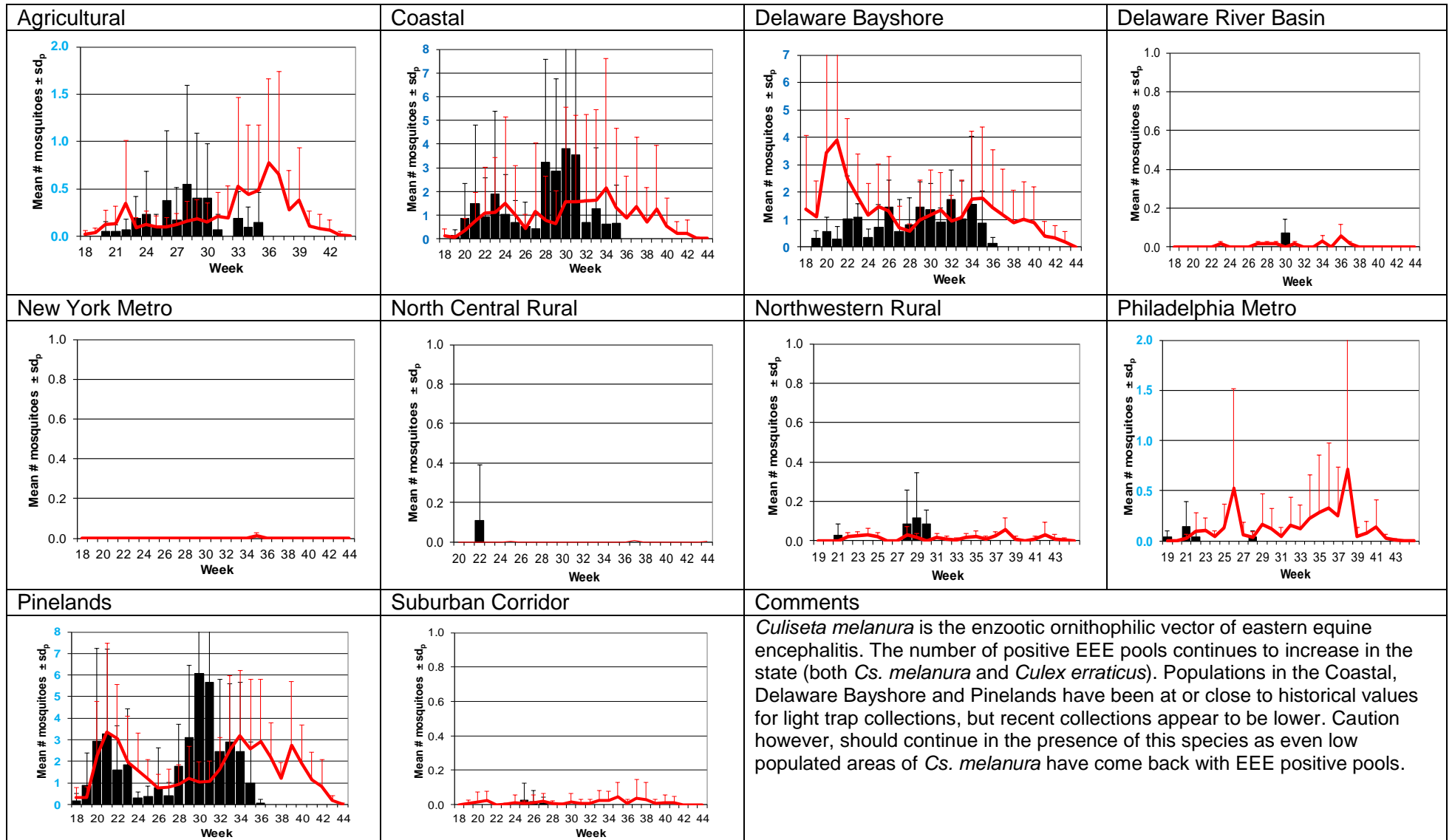
Aedes vexans - Fresh Floodwater Species Multivoltine Aedine (Ae. vexans Type)

<p>Agricultural</p>	<p>Coastal</p>	<p>Delaware Bayshore</p>	<p>Delaware River Basin</p>
<p>New York Metro</p>	<p>North Central Rural</p>	<p>Northwestern Rural</p>	<p>Philadelphia Metro</p>
<p>Pinelands</p>	<p>Suburban Corridor</p>	<p>Comments</p> <p>Populations for this fresh floodwater species continue to be on the decrease. Most of New Jersey is under abnormally dry or moderate drought conditions and despite a day or two of recent rainfall, the ground continues to be dry, suggesting it will take more rainfall to eventually produce habitat useable for these floodwater species.</p> <p>http://droughtmonitor.unl.edu/Home/RegionalDroughtMonitor.aspx?northeast</p>	

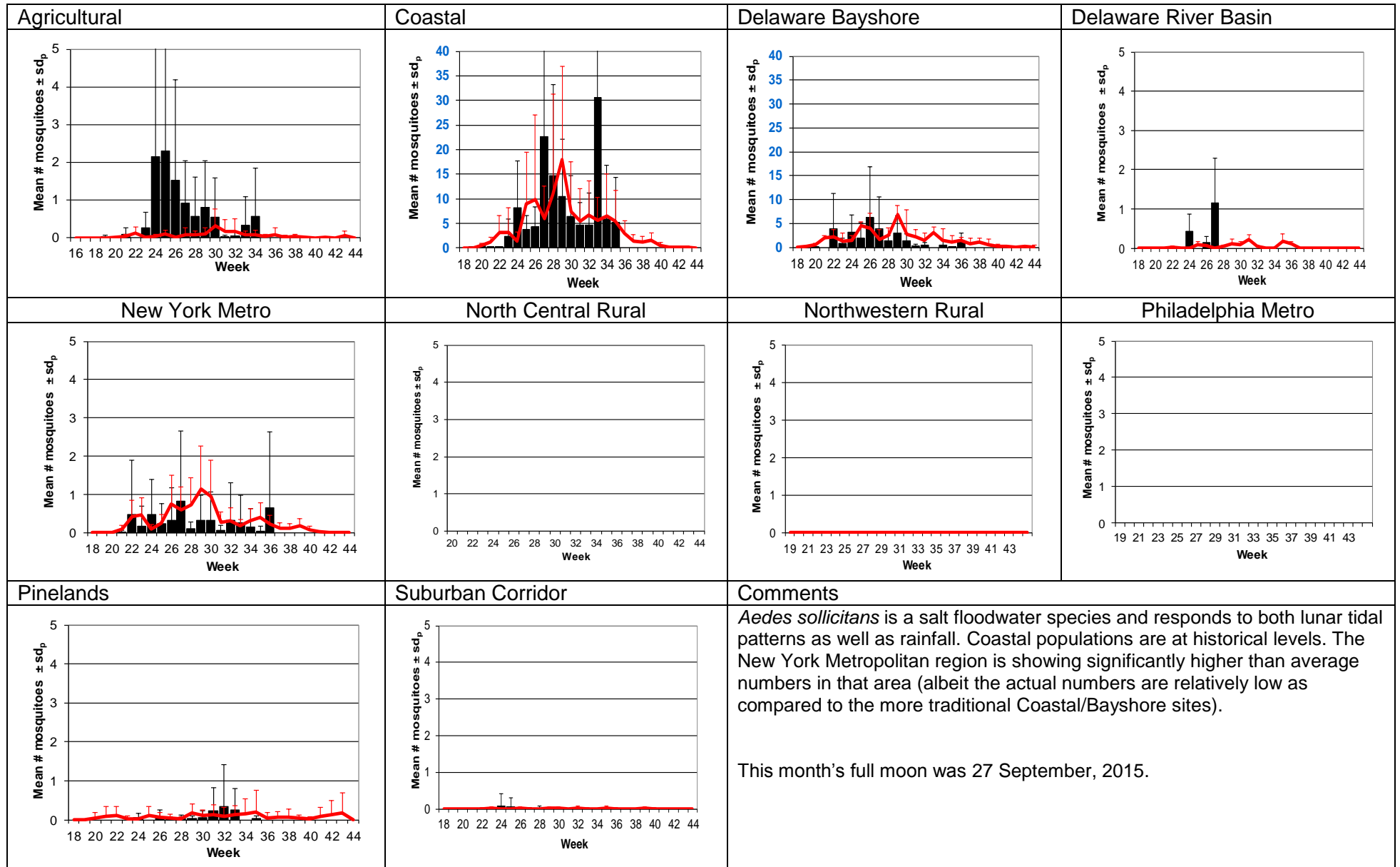
Culex Mix – Permanent Water Species Multivoltine *Culex/Anopheles* (*Cx. pipiens* Type)



Culiseta melanura – Miscellaneous Group Unique (*Cs. melanura* Type)

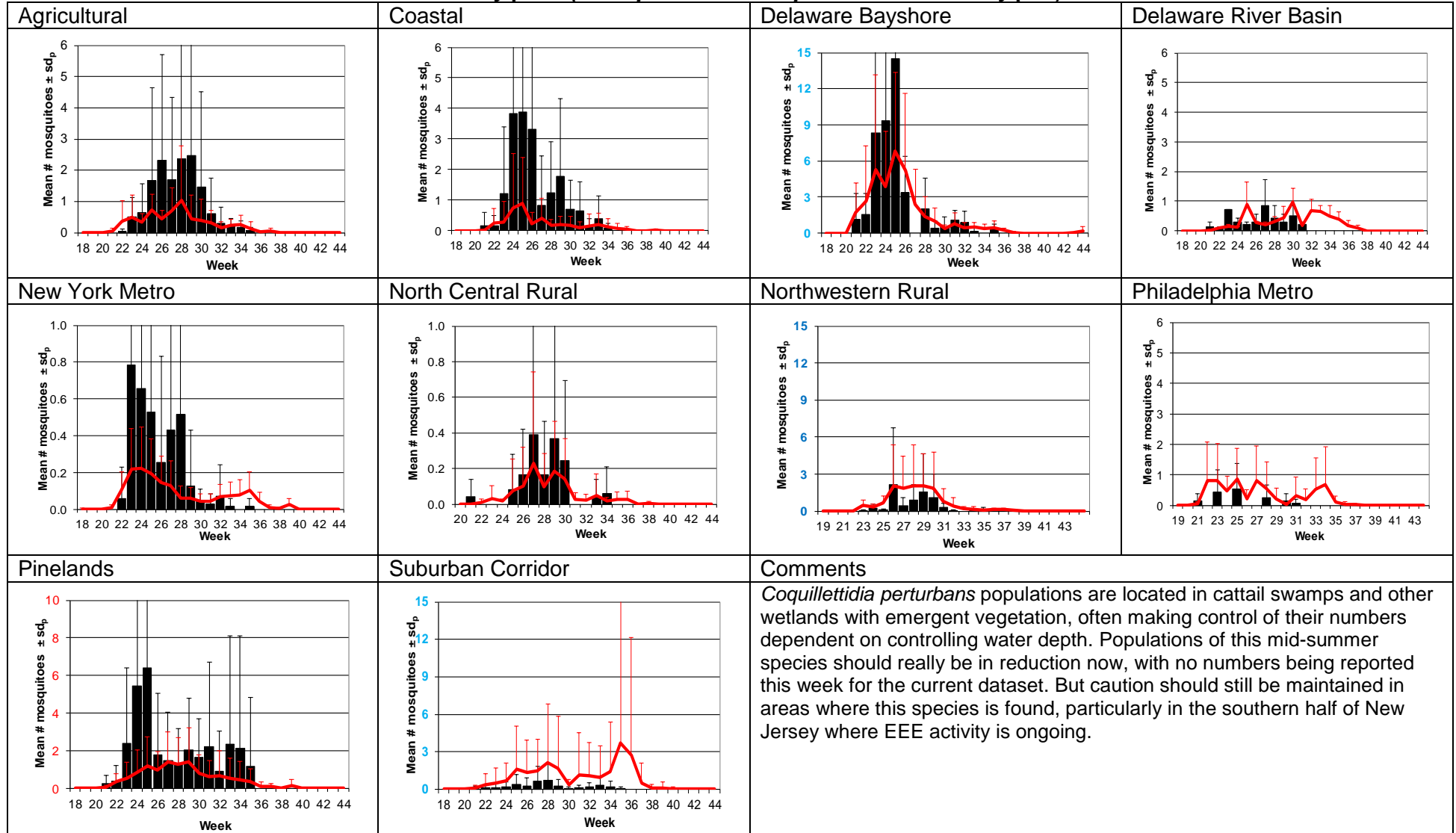


Aedes sollicitans - Salt Floodwater Species Multivoltine Aedine (*Ae. sollicitans* Type)



Coquillettidia perturbans

Monotypic (*Coquillettidia perturbans* Type)

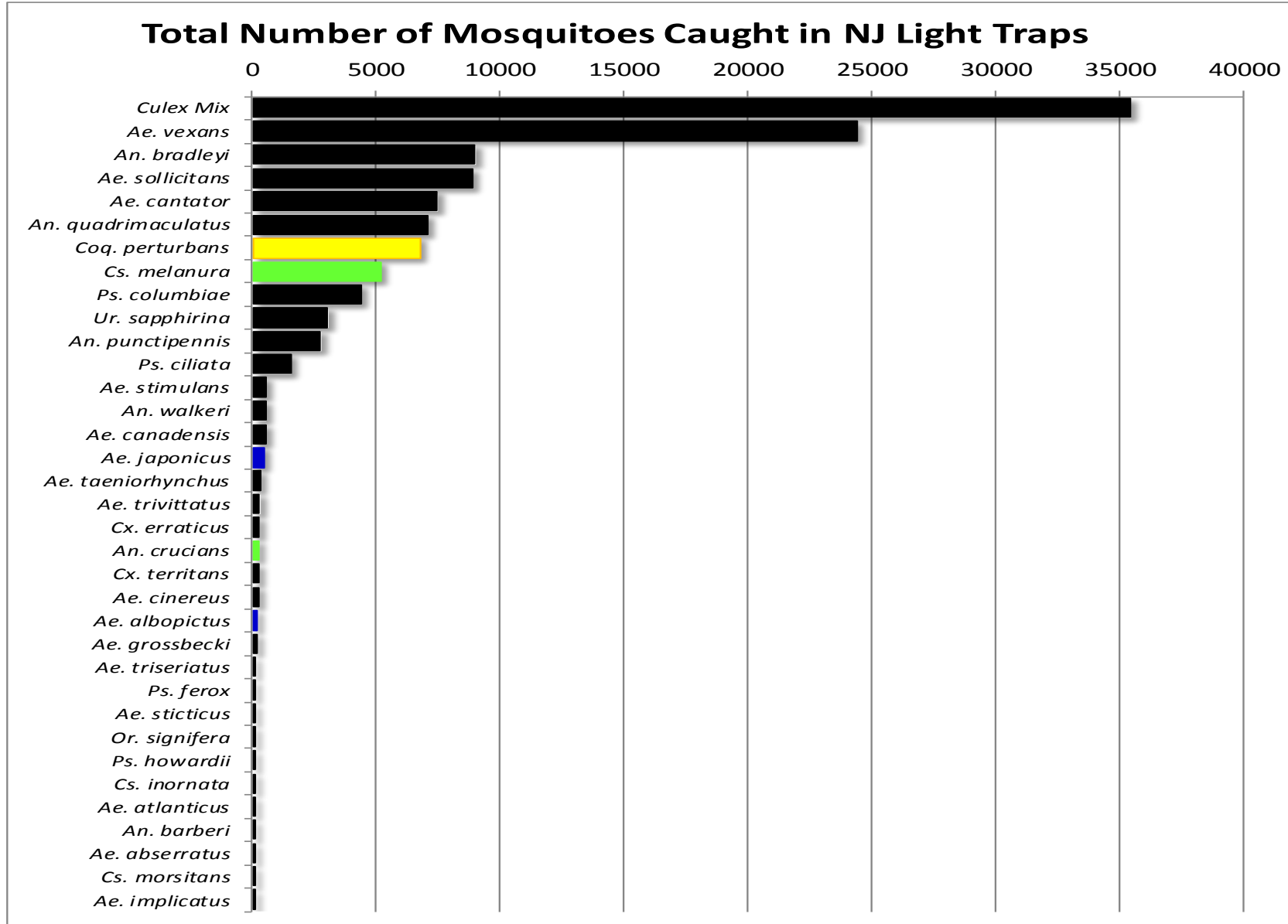


WNV

EEE

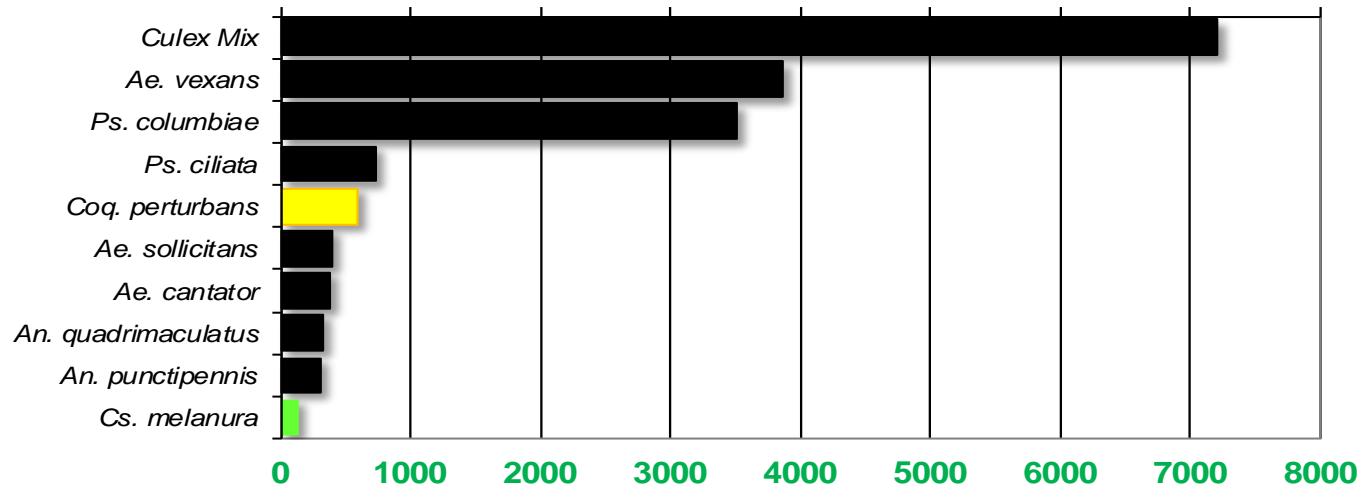
Top Ten Mosquito Species/Region - ■ *Ae. albopictus*, ■ *Ae. japonicus* (invasives); ■ *Cs. melanura* or *Cx. erraticus* ■ *Coq. perturbans*

Note: In early season when fewer species are caught, graphs may show less than ten species/region or 25 statewide.



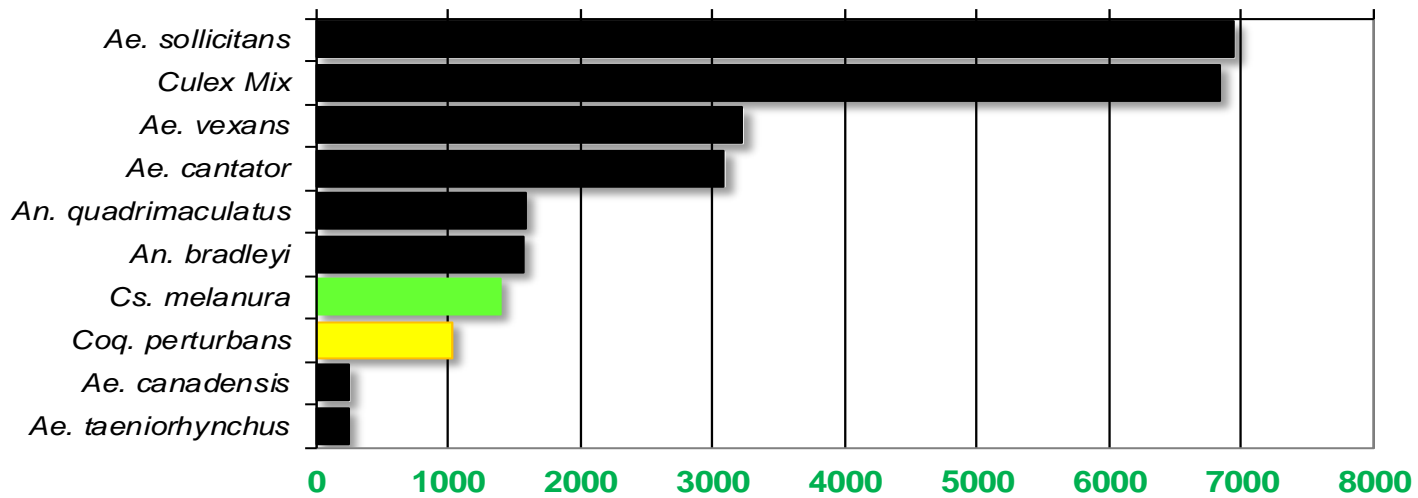
Agricultural

Total # mosquitoes



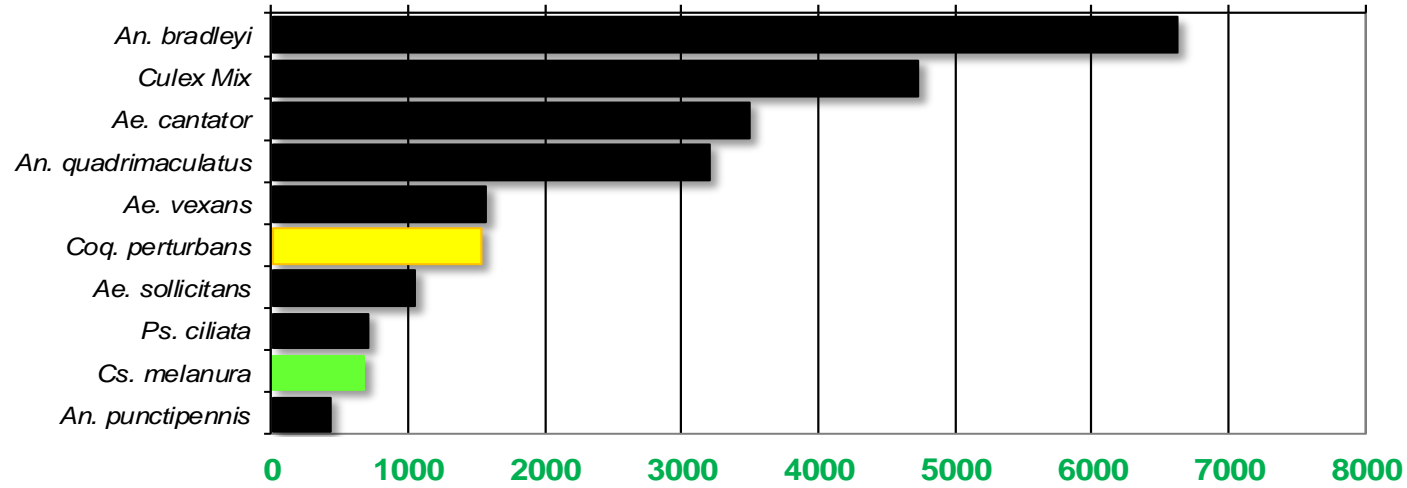
Coastal

Total # mosquitoes



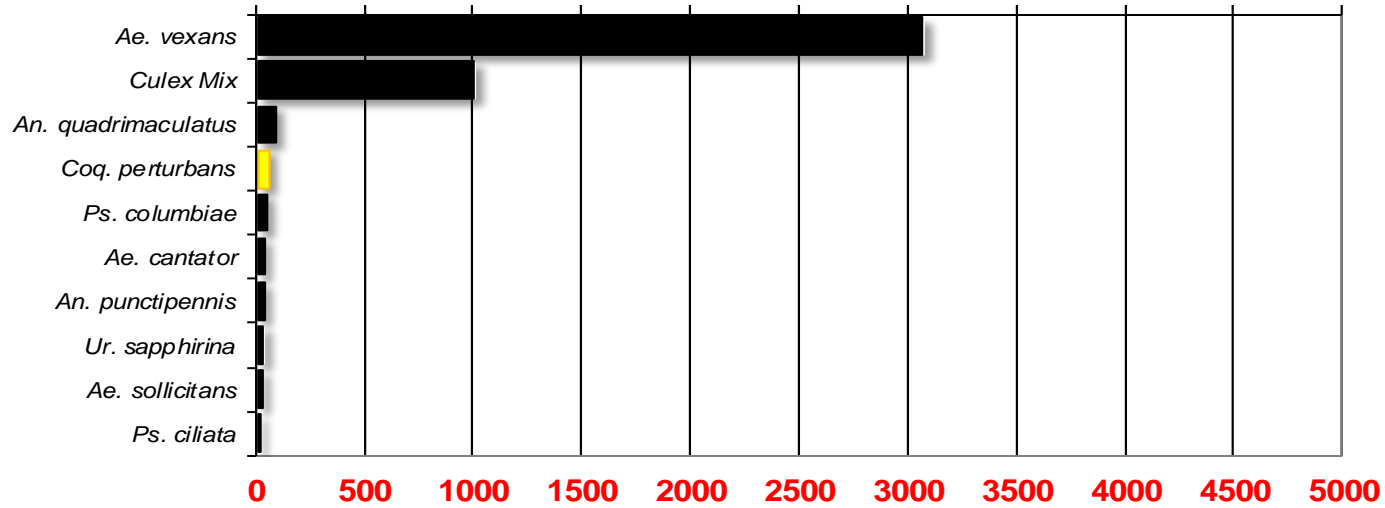
Delaware Bayshore

Total # mosquitoes



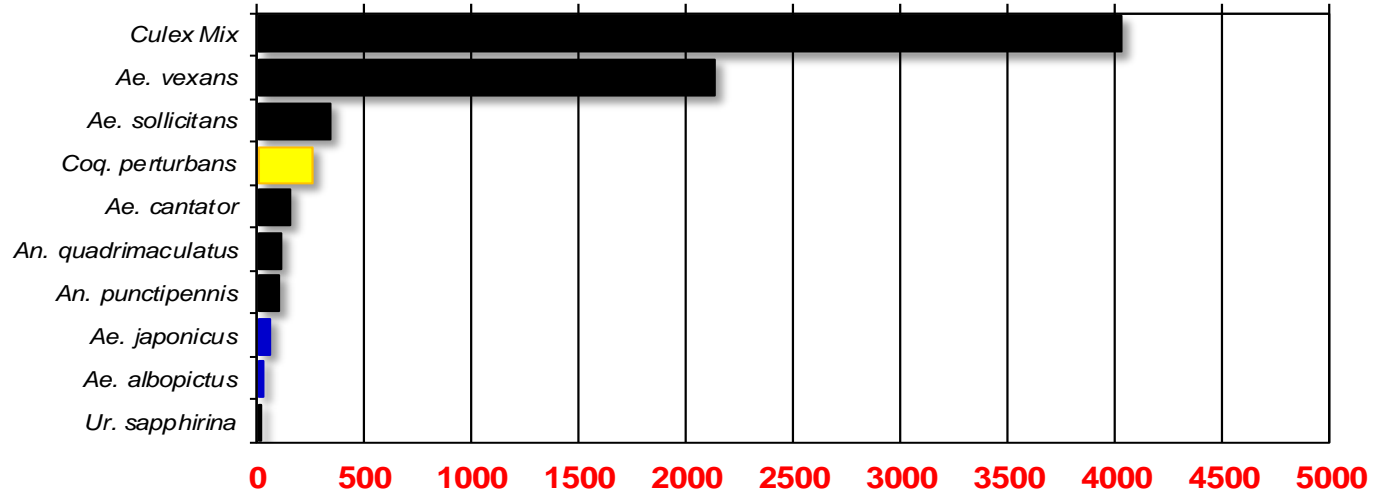
Delaware River Basin

Total # mosquitoes



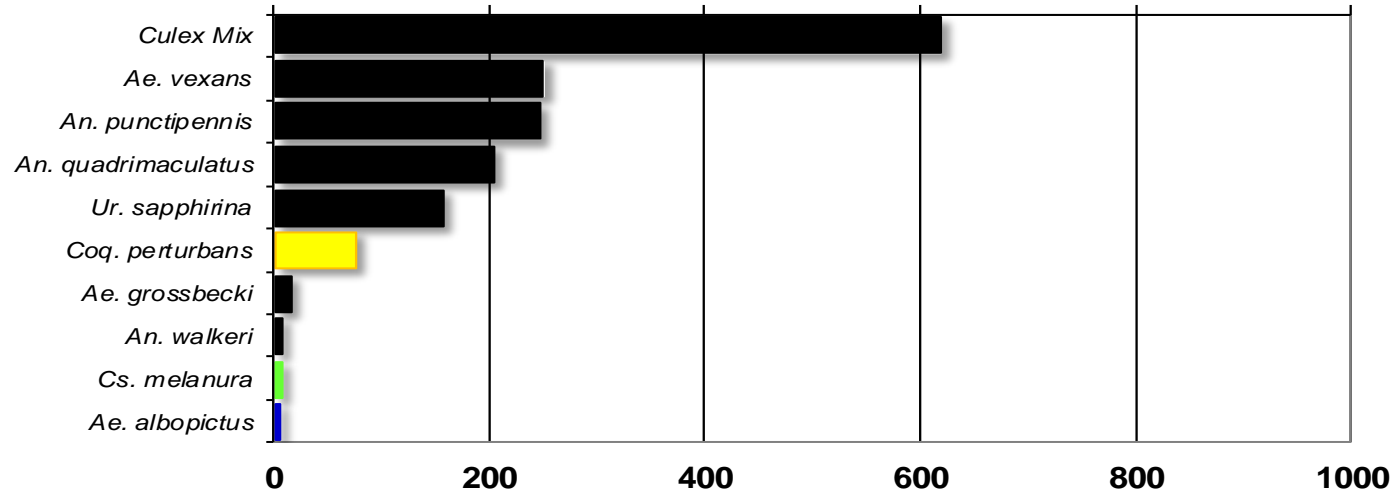
New York Metropolitan

Total # mosquitoes



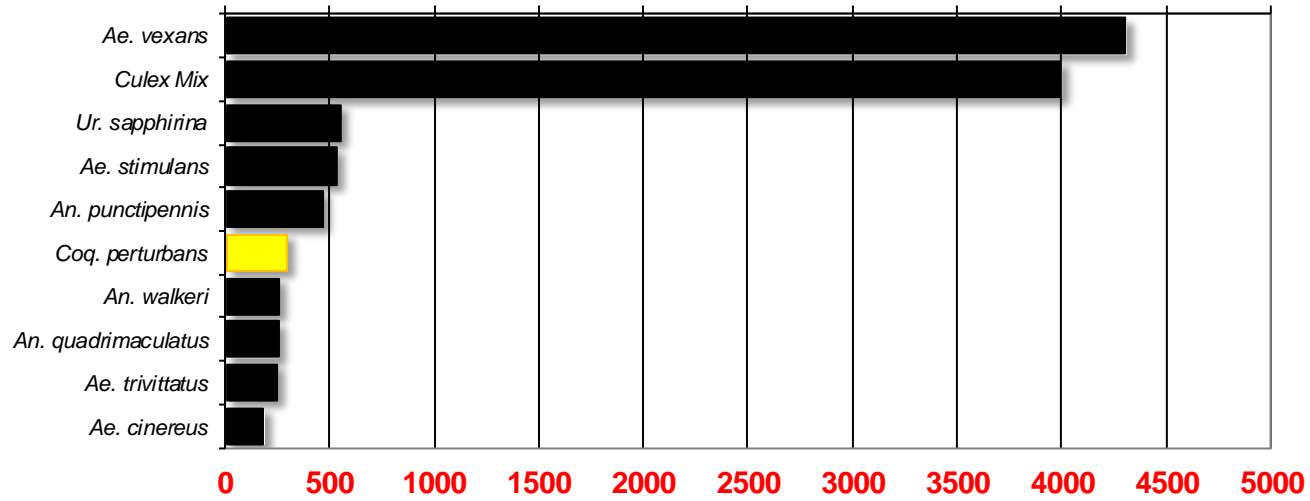
North Central Rural

Total # mosquitoes



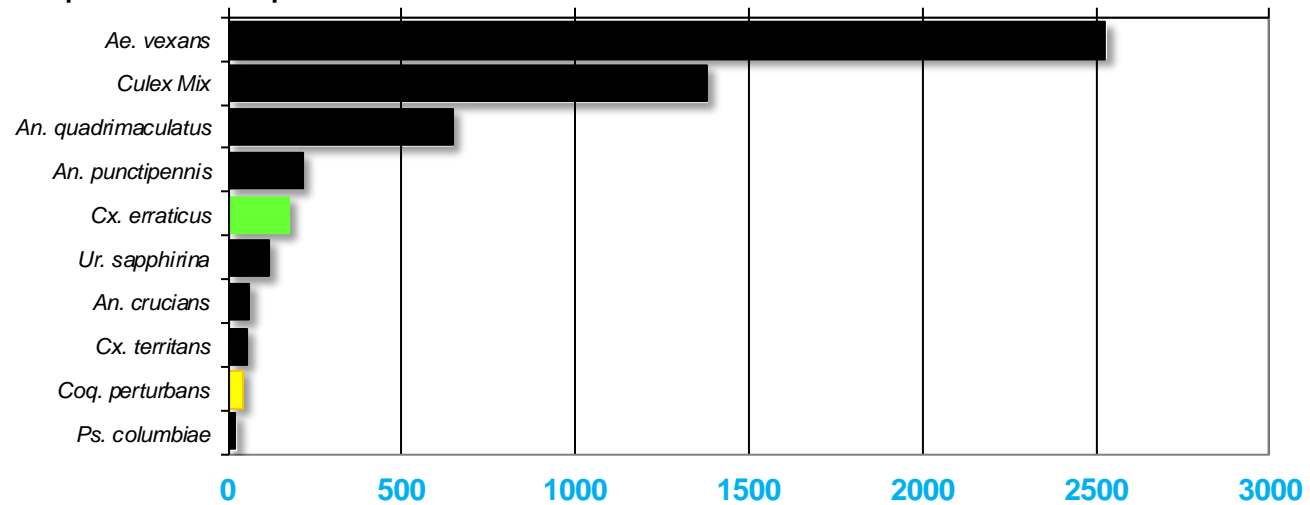
Northwest Rural

Total # mosquitoes



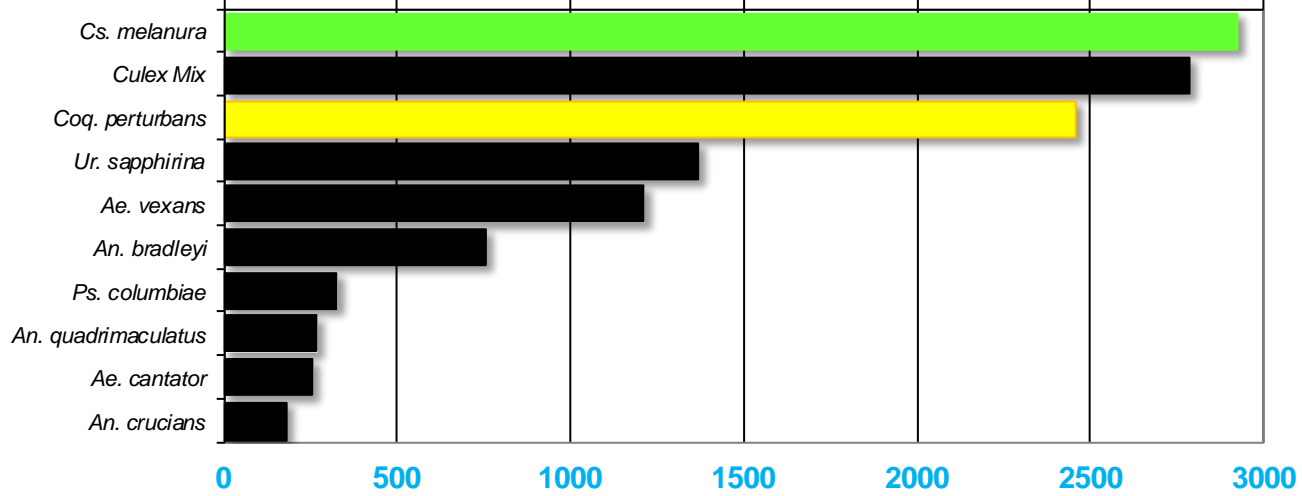
Philadelphia Metropolitan

Total # mosquitoes



Pinelands

Total # mosquitoes



Suburban Corridor

Total # mosquitoes

