

# NEW JERSEY STATEWIDE SURVEILLANCE

## Week 41 Report for 9 October to 15 October, 2006

Submitted by Lisa M. Reed

Mosquito Research and Control Unit

Rutgers University, New Brunswick, NJ 08901

**Purpose:** Data from 84 New Jersey light traps contributed by county mosquito control agencies are used to calculate trends in mosquito populations for species of nuisance or health concerns.

Calculations are based on regional distributions, with emphasis on mosquito habitat and land use. Trends will allow a statewide evaluation of changing mosquito populations, in response to control and/or changes in habitat.

*This is New Jersey Agricultural Experiment Station publication No. PT-08-40500-41-06 supported by Hatch funds and funding from the NJ State Mosquito Control Commission. Prepared by Lisa M. Reed.*

Figure 1a: Map of ten regions selected for the New Jersey Surveillance Program overlaid with county borders.

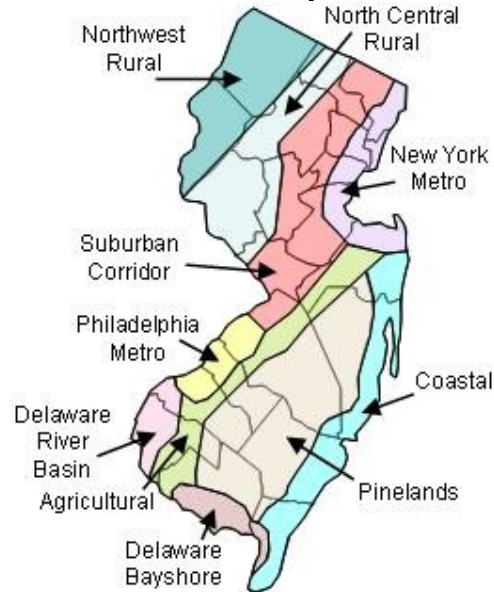


Figure 1b. Trap lat-long locations.



## Summary table – Week 41

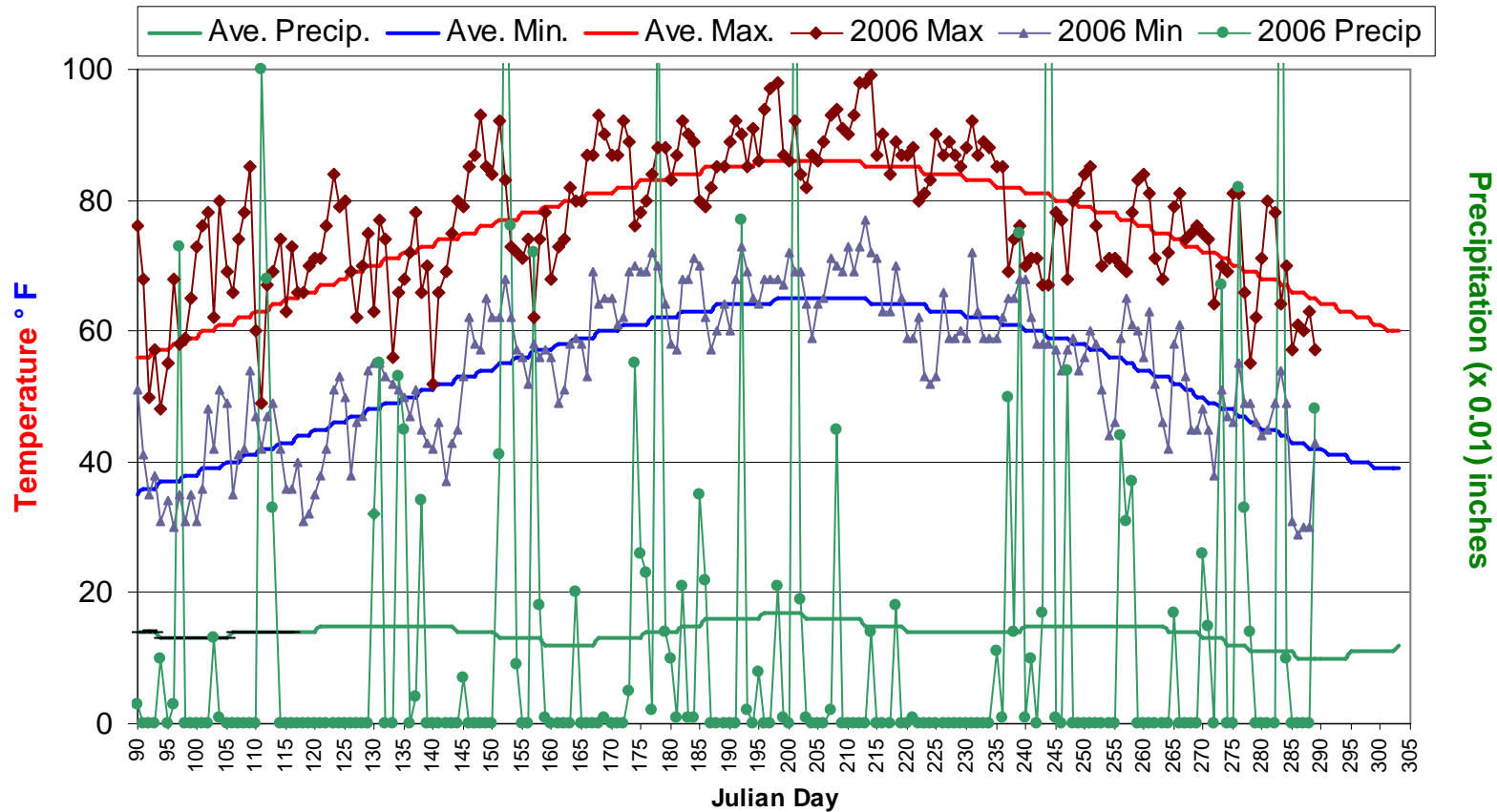
	<i>Aedes vexans</i>		<i>Culex complex</i>		<i>Coquillettidia perturbans</i>		<i>Ochlerotatus sollicitans</i>	
Region	This Week	Average*	This Week	Average*	This Week	Average*	This Week	Average*
Agricultural	0.19	1.79	0.36	2.40	0.00	0.00	0.00	0.00
Coastal	0.67	1.24	0.68	1.47	0.00	0.00	0.00	1.31
Delaware Bayshore	0.12	0.49	3.24	3.37	0.00	0.49	0.45	2.21
Delaware River Basin	0.00	1.46	0.00	1.66	0.00	0.00	0.00	0.00
New York Metro	0.09	0.37	0.76	1.56	0.00	0.00	0.00	0.09
North Central Rural	0.00	0.06	0.00	0.04	0.00	0.00	0.00	0.00
Northwest Rural	5.50	2.48	0.17	0.59	0.00	0.00	0.00	0.00
Philadelphia Metro	2.66	5.00	0.86	1.46	0.00	0.03	0.00	0.00
Pinelands	0.08	0.65	0.27	1.89	0.00	0.00	0.00	0.00
Suburban Corridor	0.00	0.56	0.00	0.42	0.00	0.00	0.00	0.00

Graphs include *Ae. vexans*, *Culex complex* (*Cx. pipiens*, *Cx. restuans*, and *Cx. salinarius*), *Oc. sollicitans*, *Cs. melanura* and *Top Ten*.

**6 of 21 counties in one or both weeks; 20 of 21 counties reporting.** Note low participation: counties, especially those in the northern half of the state are bringing in light traps as the end of season approaches.

# Climate Data

New Brunswick 1971-2000 Historical/Hillsborough 2006

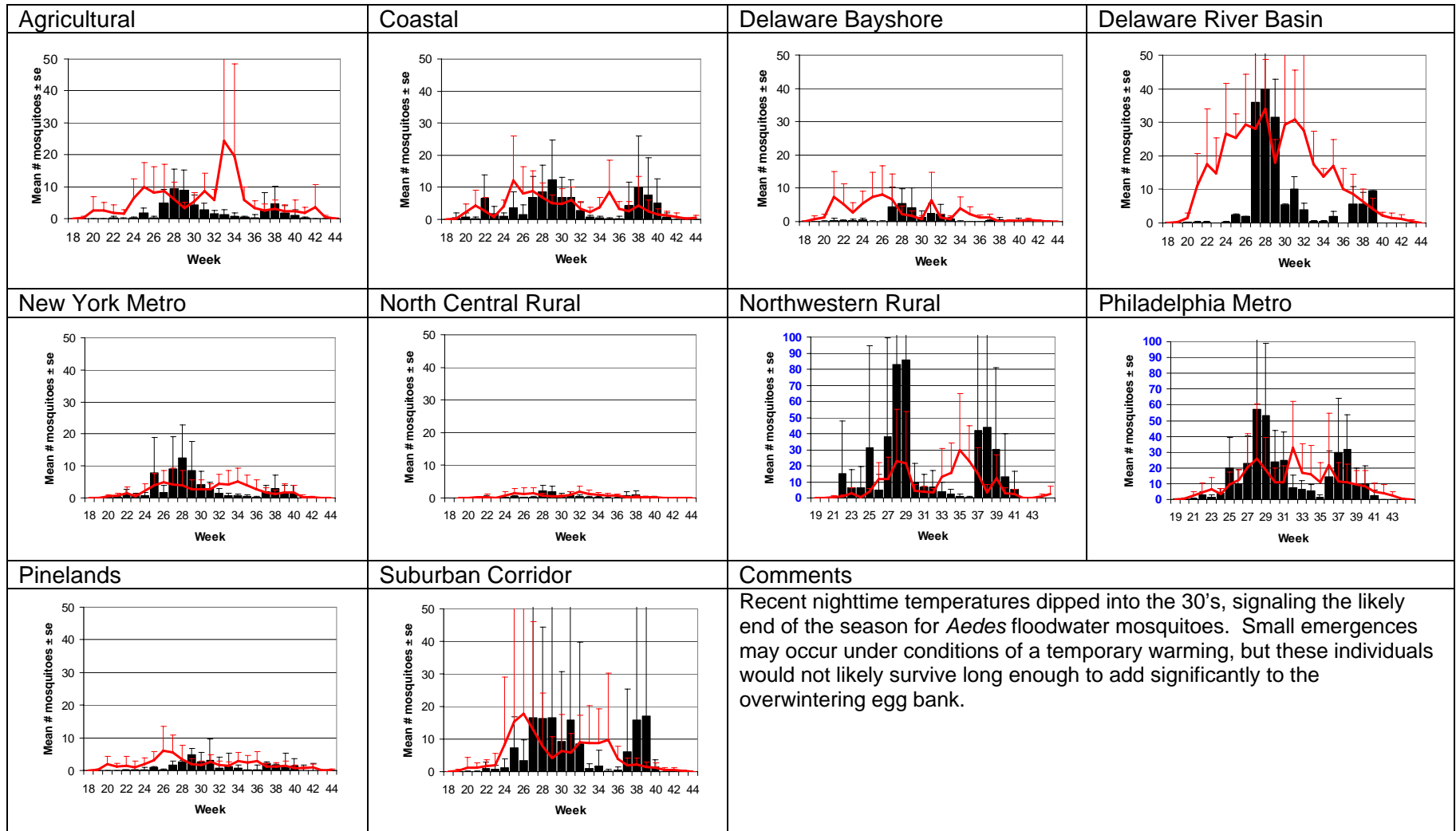


This figure shows historical average maximum and minimum temperatures and average precipitation recorded in the New Brunswick, NJ weather station over a recent 30 year period. Also graphed are the current year's minimum and maximum temperatures as recorded at the Hillsborough NJ weather station (a station close to central NJ which recorded all three parameters and was available online at the NJ state climatologist).

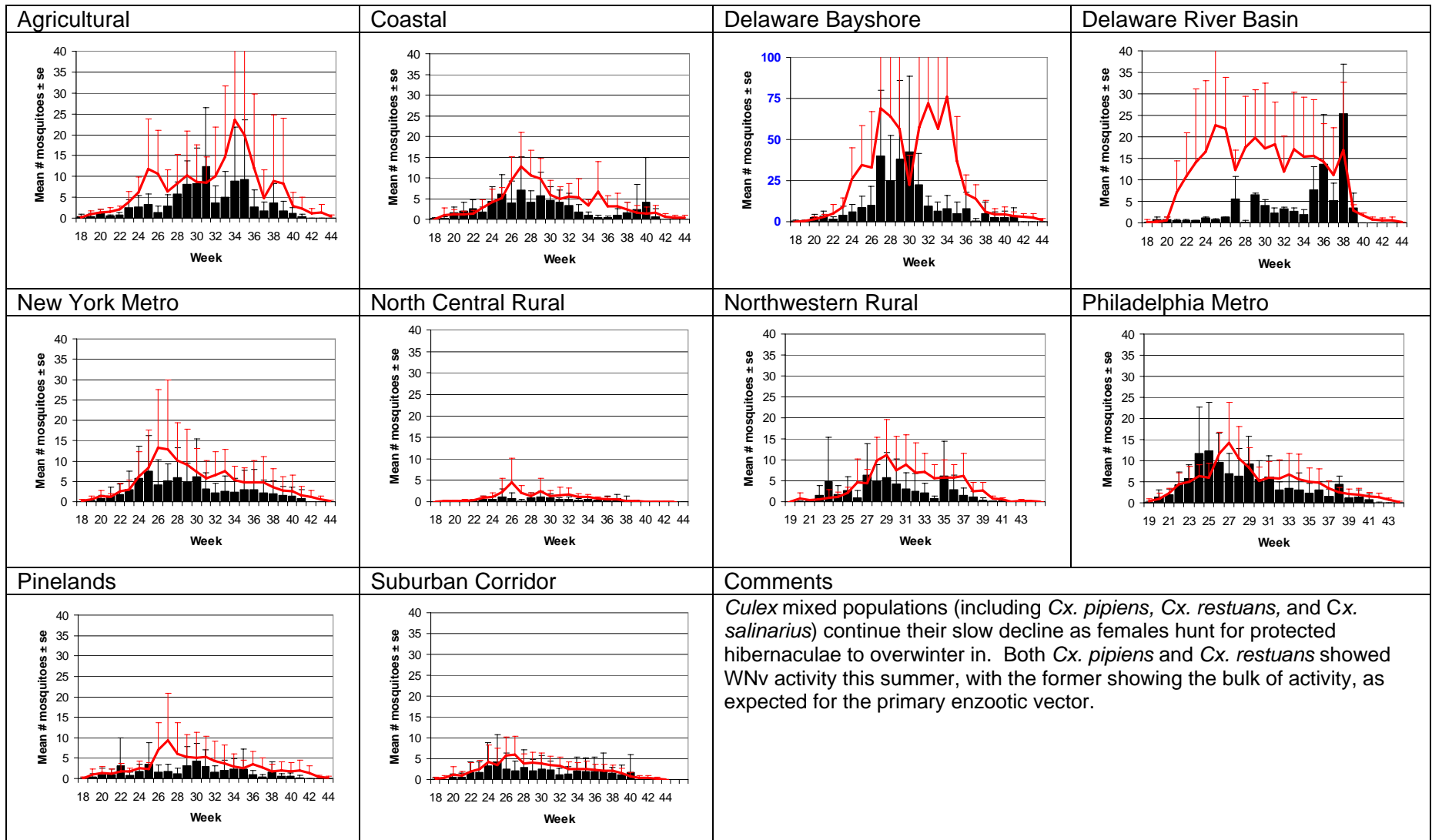
The state climatologist has an extensive amount of climatological historical data as well as stations reporting current conditions and forecasts:

<http://climate.rutgers.edu/stateclim/>

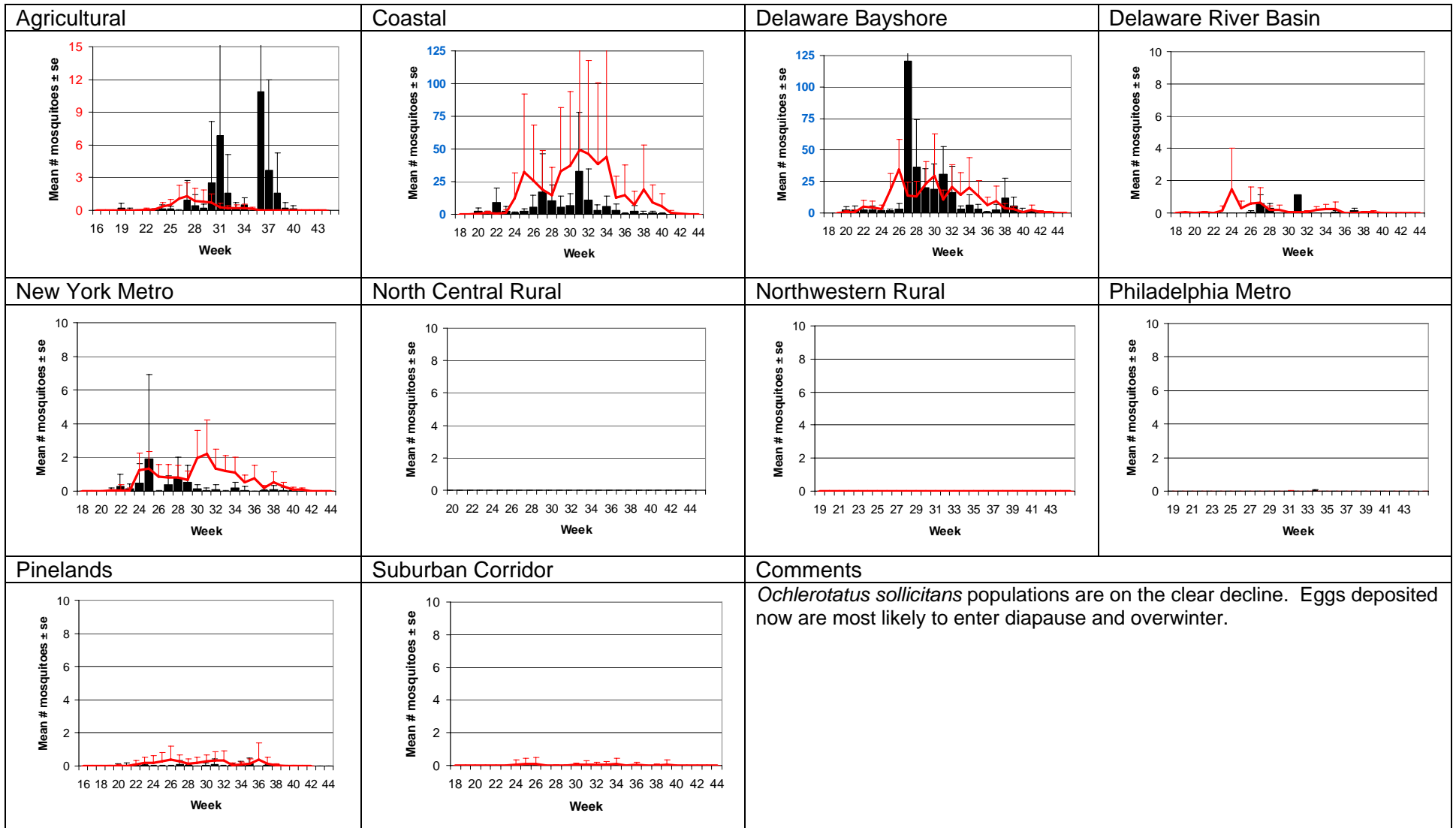
# *Aedes vexans* - Fresh Floodwater Species



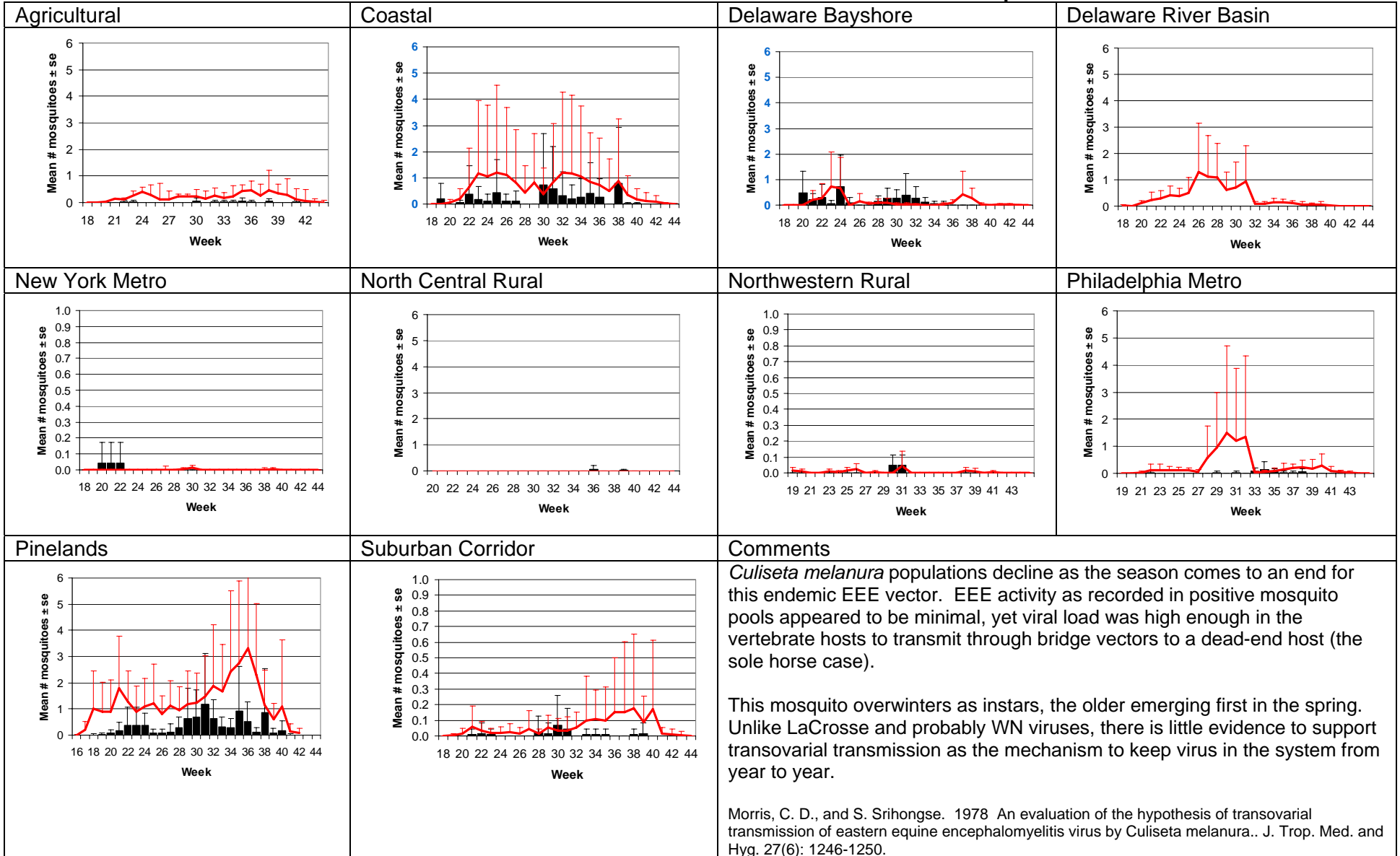
# Culex Complex - Multivoltine Culex Species



# *Ochlerotatus sollicitans* - Salt Marsh Floodwater Species



## *Culiseta melanura* – Miscellaneous Group



Top Ten cumulative species for each region to date.

