

NEW JERSEY ADULT MOSQUITO SURVEILLANCE

Report for 1 July to 7 July, 2007, Week 27

Prepared by Lisa M. Reed, Scott Crans and Dina Fonseca
Center for Vector Biology
Rutgers University, New Brunswick, NJ

Purpose: Samples from New Jersey light traps throughout the state are collected by county mosquito control agencies for use in their IPM programs. A portion of this data (about 82 traps) is sent to Rutgers and re-calculated to show statewide trends in mosquito populations for species of nuisance or health concerns.

Calculations are based on regional distributions, with emphasis on mosquito habitat and land use. Trends will allow a statewide evaluation of changing mosquito populations, in response to control and/or changes in habitat.

This New Jersey Agricultural Experiment Station report is supported by Rutgers University, Hatch funds, funding from the NJ State Mosquito Control Commission and with the participation of county mosquito control agencies in New Jersey.

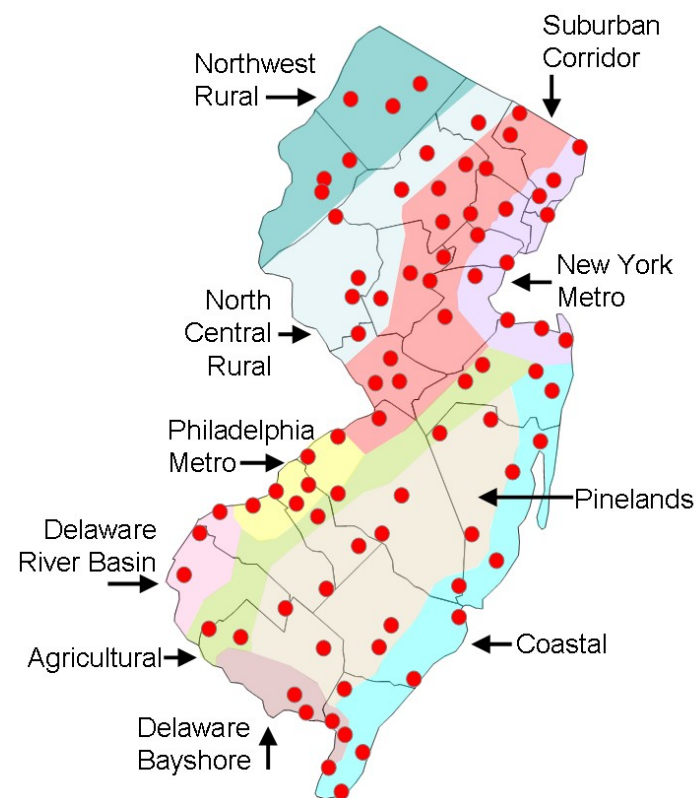


Figure 1: Ten regions selected for the New Jersey Adult Mosquito Surveillance Program overlaid with county borders. Trap locations indicated by red-filled circles.

Summary table – Week 27

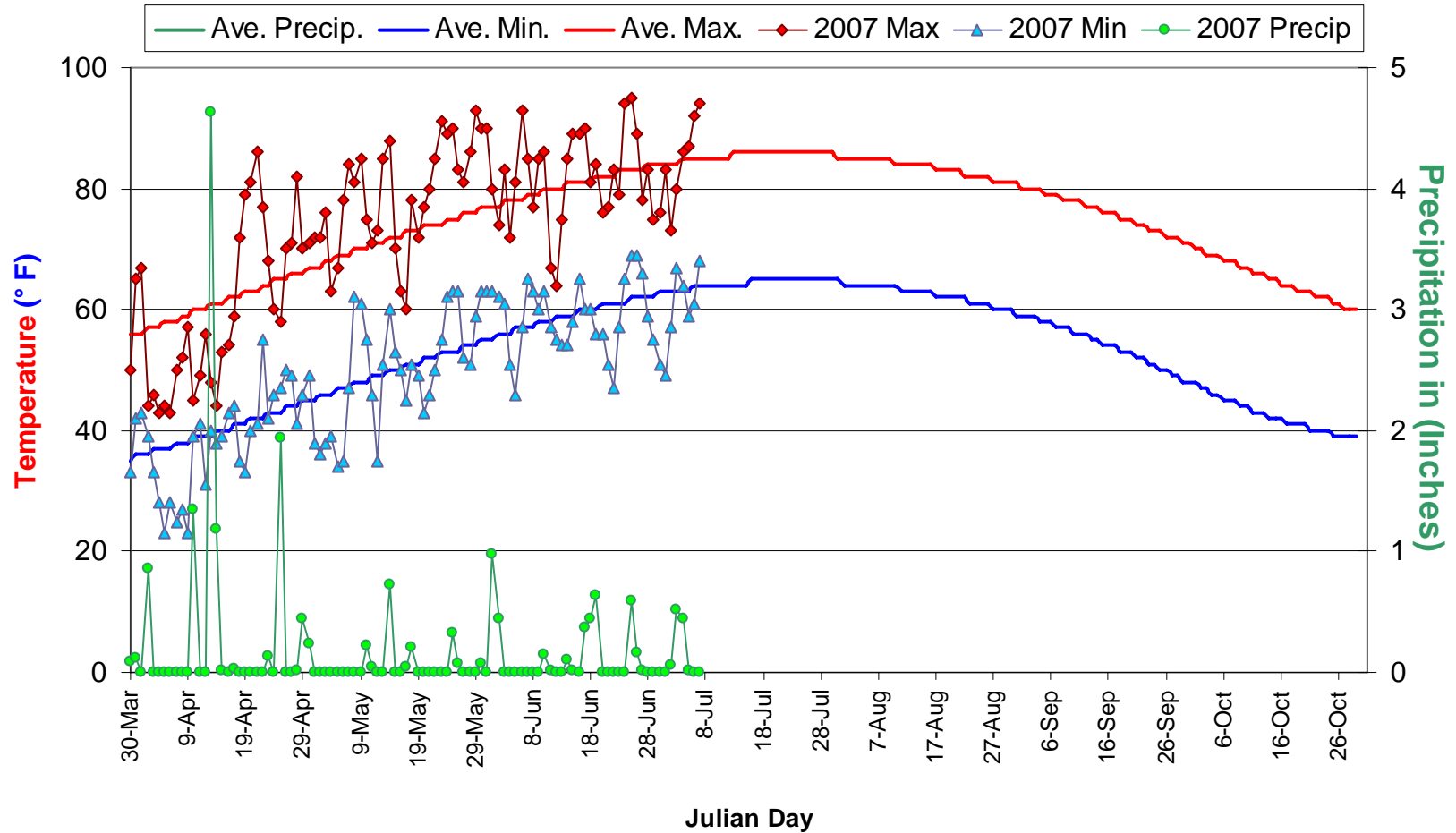
Region	<i>Aedes vexans</i>		<i>Culex Mix</i>		<i>Coquillettidia perturbans</i>		<i>Aedes sollicitans</i>	
	This Week	Average*	This Week	Average*	This Week	Average*	This Week	Average*
Agricultural	0.03	9.74	1.38	5.96	0.00	1.11	0.00	1.11
Coastal	0.62	8.50	0.76	12.19	0.00	1.90	0.46	16.41
Delaware Bayshore	0.00	6.08	13.83	61.59	0.00	4.85	6.26	11.31
Delaware River Basin	0.00	28.29	0.00	10.86	0.00	0.36	0.00	0.37
New York Metro	1.01	4.89	7.89	13.14	0.19	0.20	0.14	0.93
North Central Rural	0.04	1.10	0.18	1.79	0.00	0.17	0.00	0.00
Northwest Rural	0.02	30.69	0.00	5.32	0.00	0.17	0.00	0.00
Philadelphia Metro	1.69	20.15	1.93	10.94	0.03	1.11	0.00	0.00
Pinelands	0.57	4.60	0.74	8.01	0.35	1.77	0.12	0.24
Suburban Corridor	0.33	14.86	0.68	4.32	0.12	20.92	0.00	< 0.01

* Averages represent data from, at most, the previous 5 years.

State Summary: Mosquito populations appear to be lower during the first week in July, but weeks with holidays such as the 4th of July often have lower values that are likely an artifact of human scheduling.

Climate Data

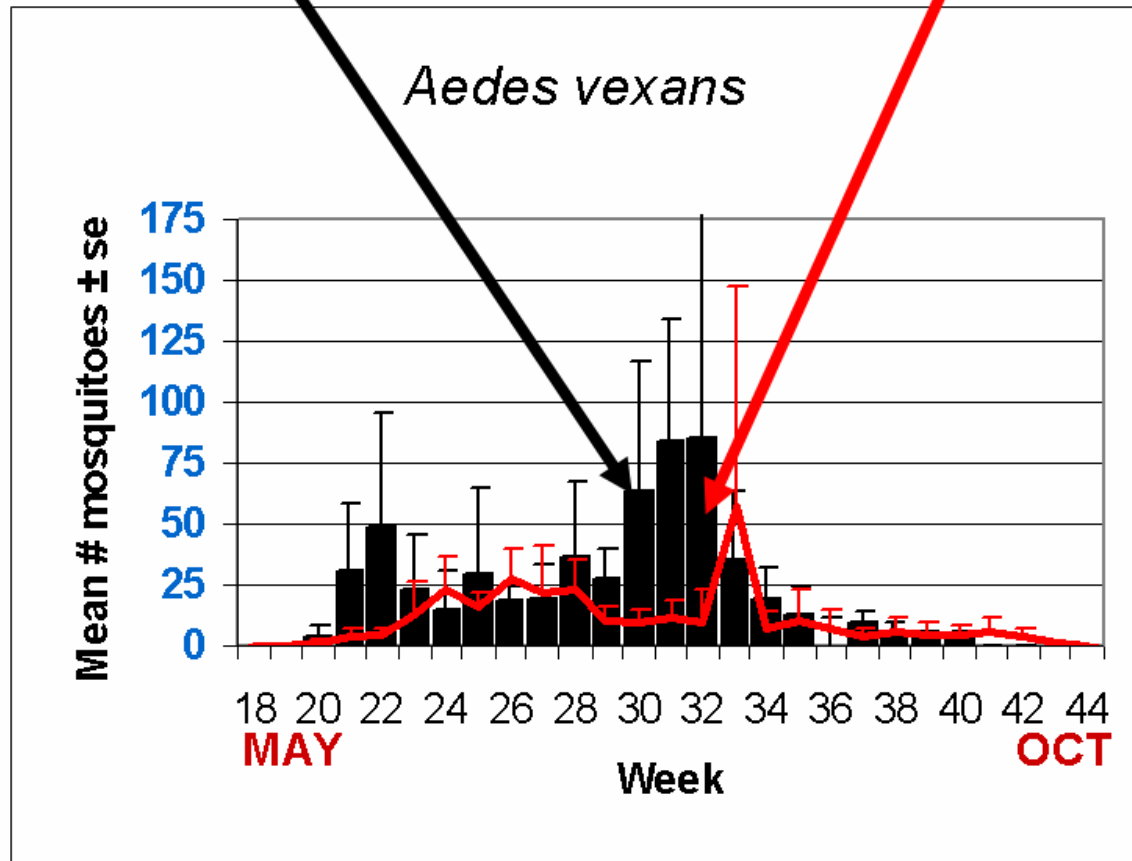
New Brunswick 1971-2000 Historical/Hillsborough 2007



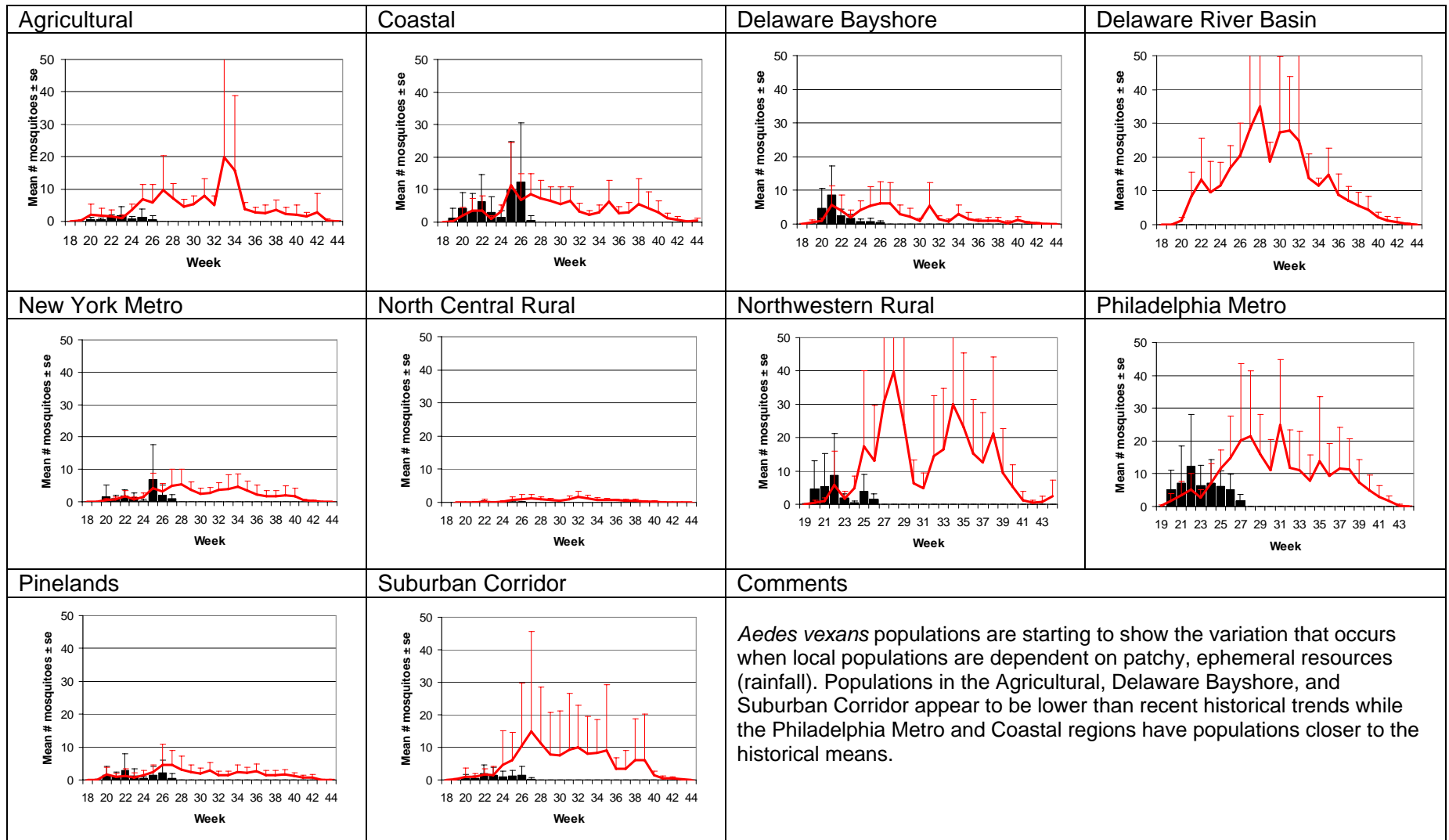
This figure shows historical average maximum and minimum temperatures and average precipitation recorded in the New Brunswick, NJ weather station over a recent 30 year period. Also graphed are the current year's minimum and maximum temperatures as recorded at the Hillsborough NJ weather station (a station close to central NJ which recorded all three parameters and was available online at the NJ state climatologist).

The Species Graphs: The species graph pages include a graph with two plots for each of the ten regions defined on the first page (Agricultural, Coastal, Delaware Bayshore, Delaware River, New York Metro, North-Central, Northwestern, Philadelphia Metro, Pinelands, and Suburban Corridor). Below is an example of one graph from one species within one region. The bar plot show the average number of mosquitoes per trap within the region (weekly means) and line plots show the historical trend as the average number of mosquitoes from the previous 5 years (5-year average). In general, historical data are running means from the previous 5 years, but on occasion, will include data from fewer years. Adjustments are made to account for year discrepancies. Data for Week 27 are from Atlantic, Bergen, Camden Cumberland, Essex, Hudson, Hunterdon, Mercer, Morris, Ocean, Passaic, Somerset, Union and Warren counties.

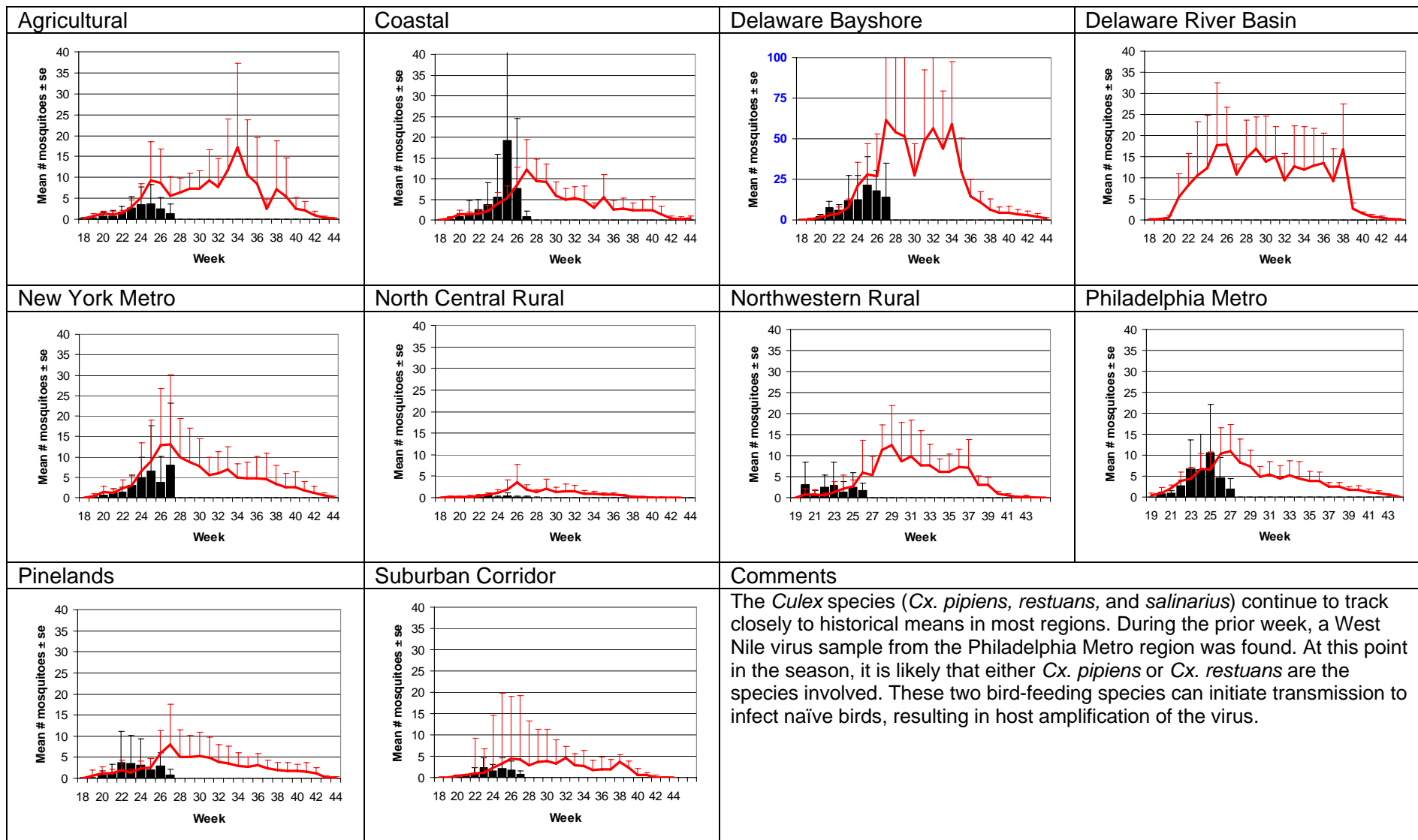
Weekly Means Against 5-year Average



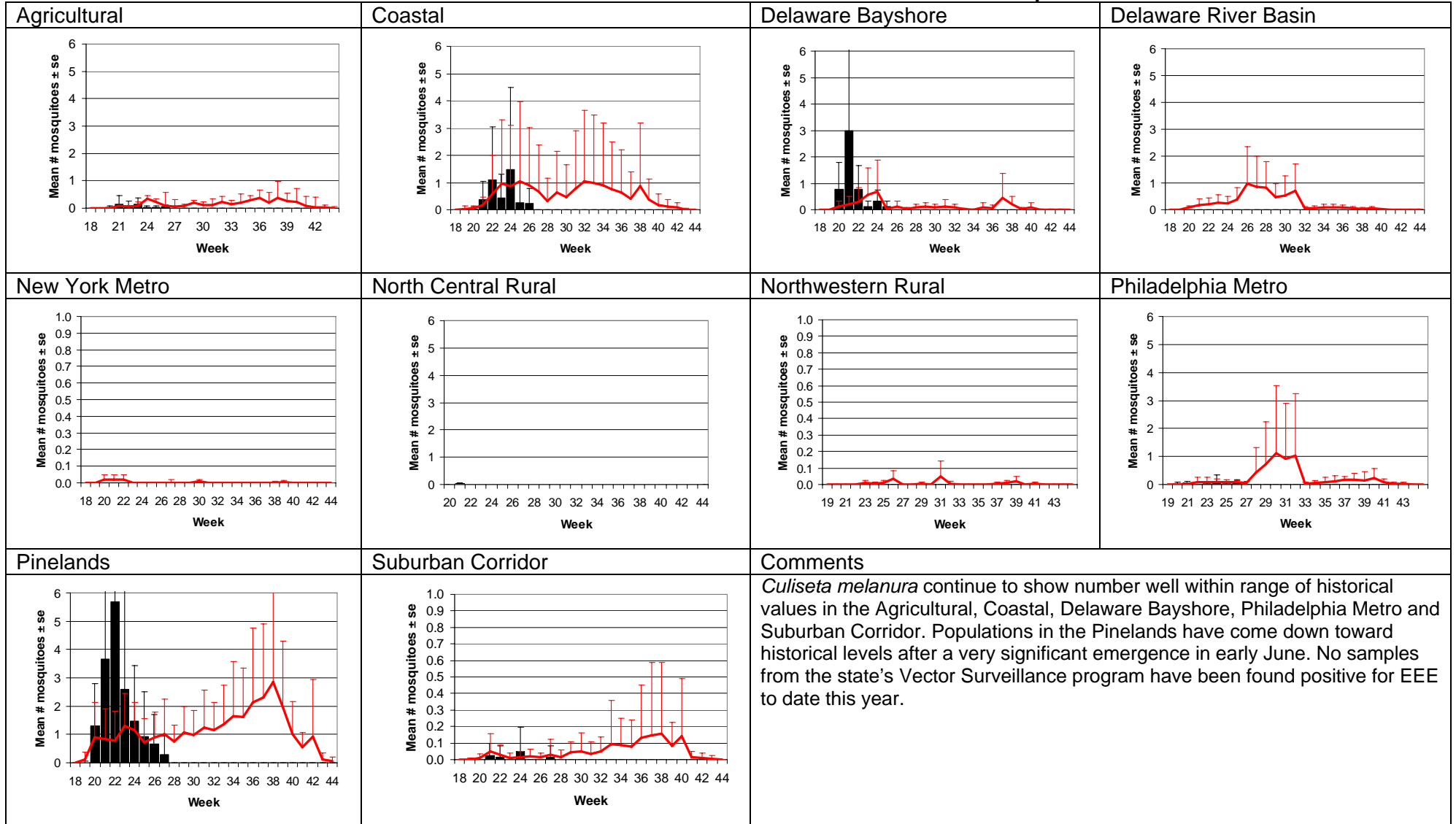
Aedes vexans - Fresh Floodwater Species



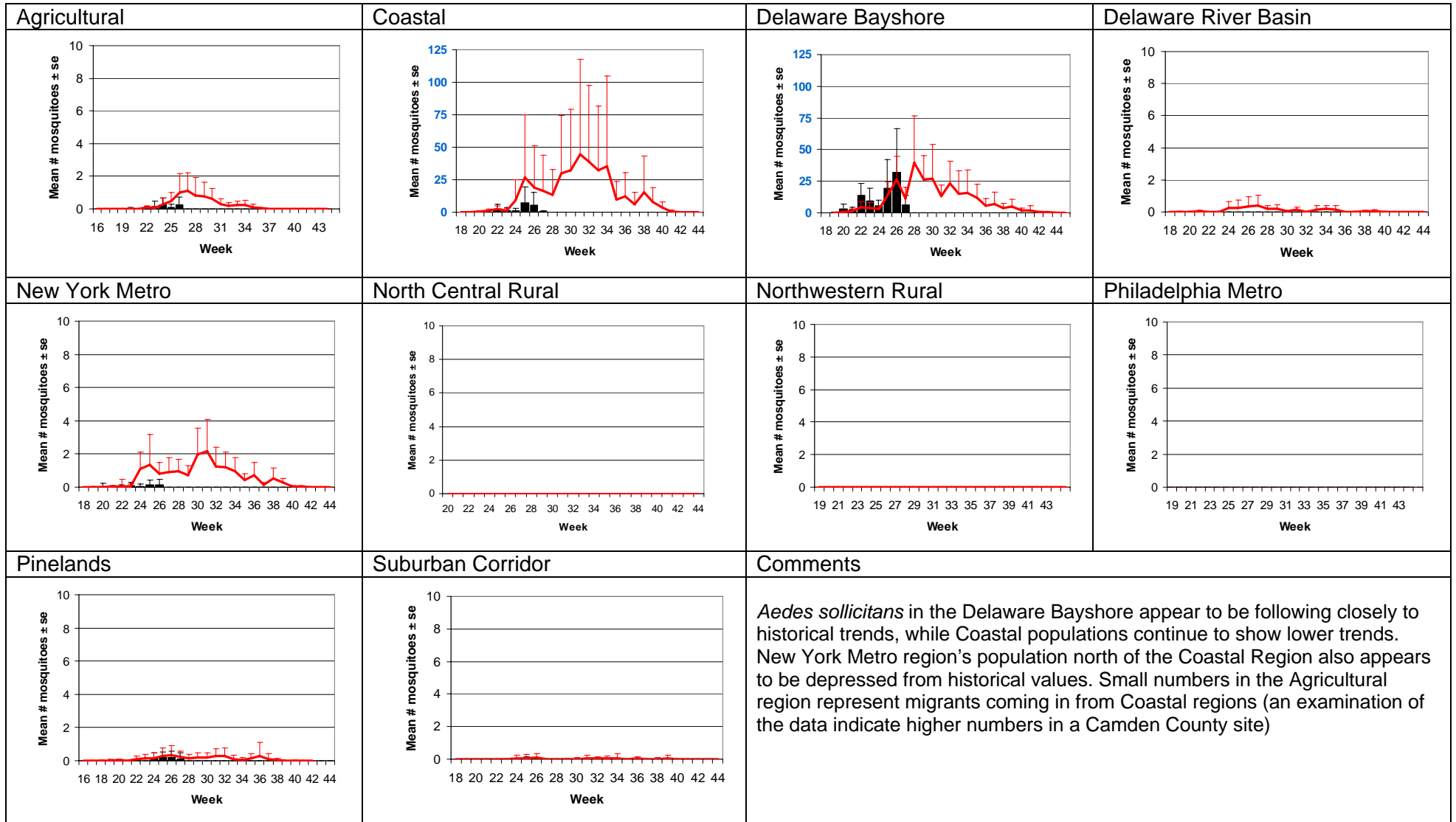
Culex Mix - Multivoltine Culex Species



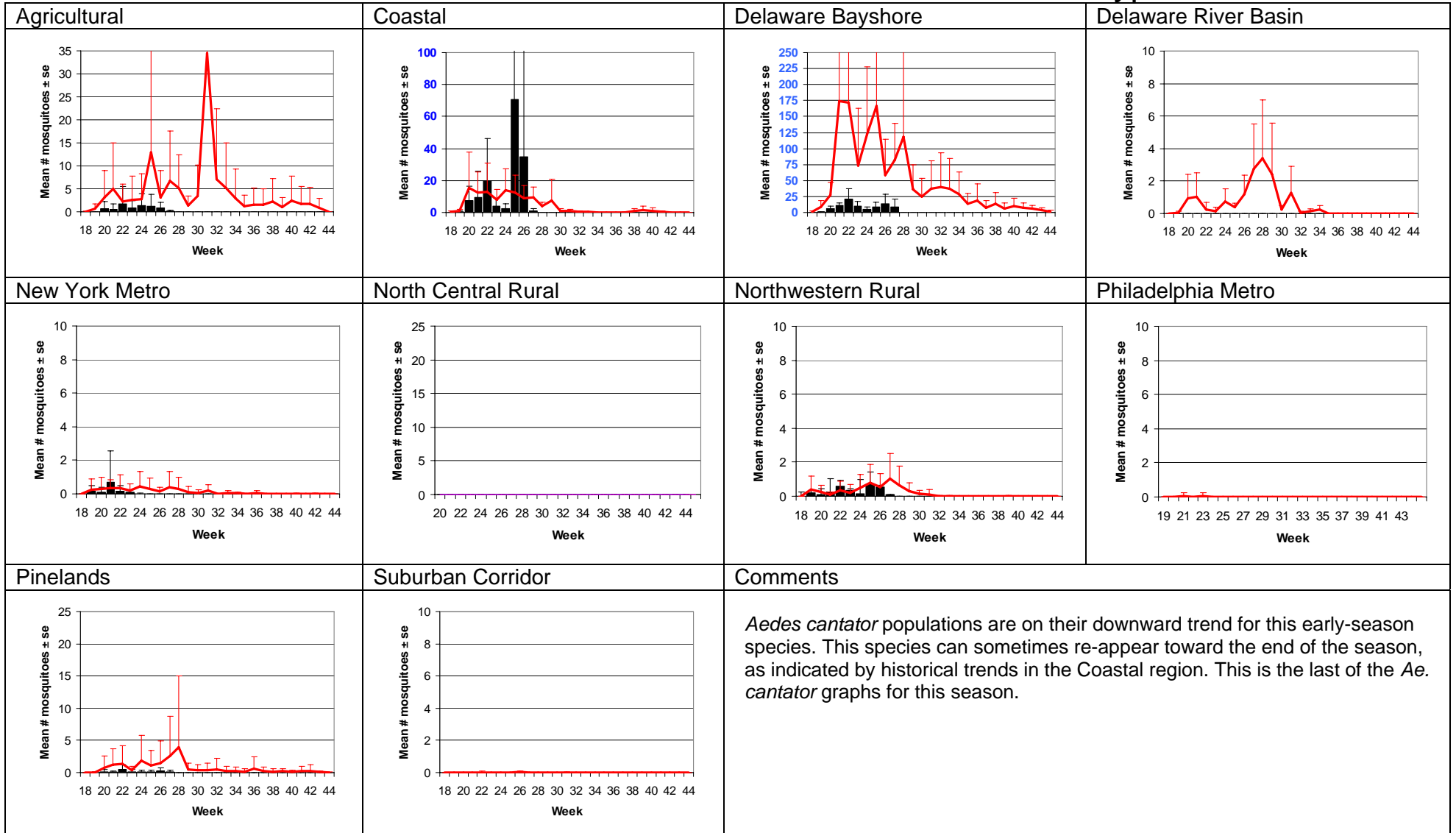
Culiseta melanura – Miscellaneous Group



Aedes sollicitans - Salt Marsh Floodwater Species



Aedes cantator – Multivoltine Aedine, *Ae. sollicitans* type



Coquillettidia perturbans – Unique Life History

