

# NEW JERSEY ADULT MOSQUITO SURVEILLANCE Report

26 August to 1 September 2018, CDC Week 35  
 Prepared by Lisa M. Reed, Diana Carle and Dina Fonseca  
 Center for Vector Biology



This New Jersey Agricultural Experiment Station report is supported by Rutgers University, Hatch funds, funding from the NJ State Mosquito Control Commission and with the participation of the 21 county mosquito control agencies of New Jersey.

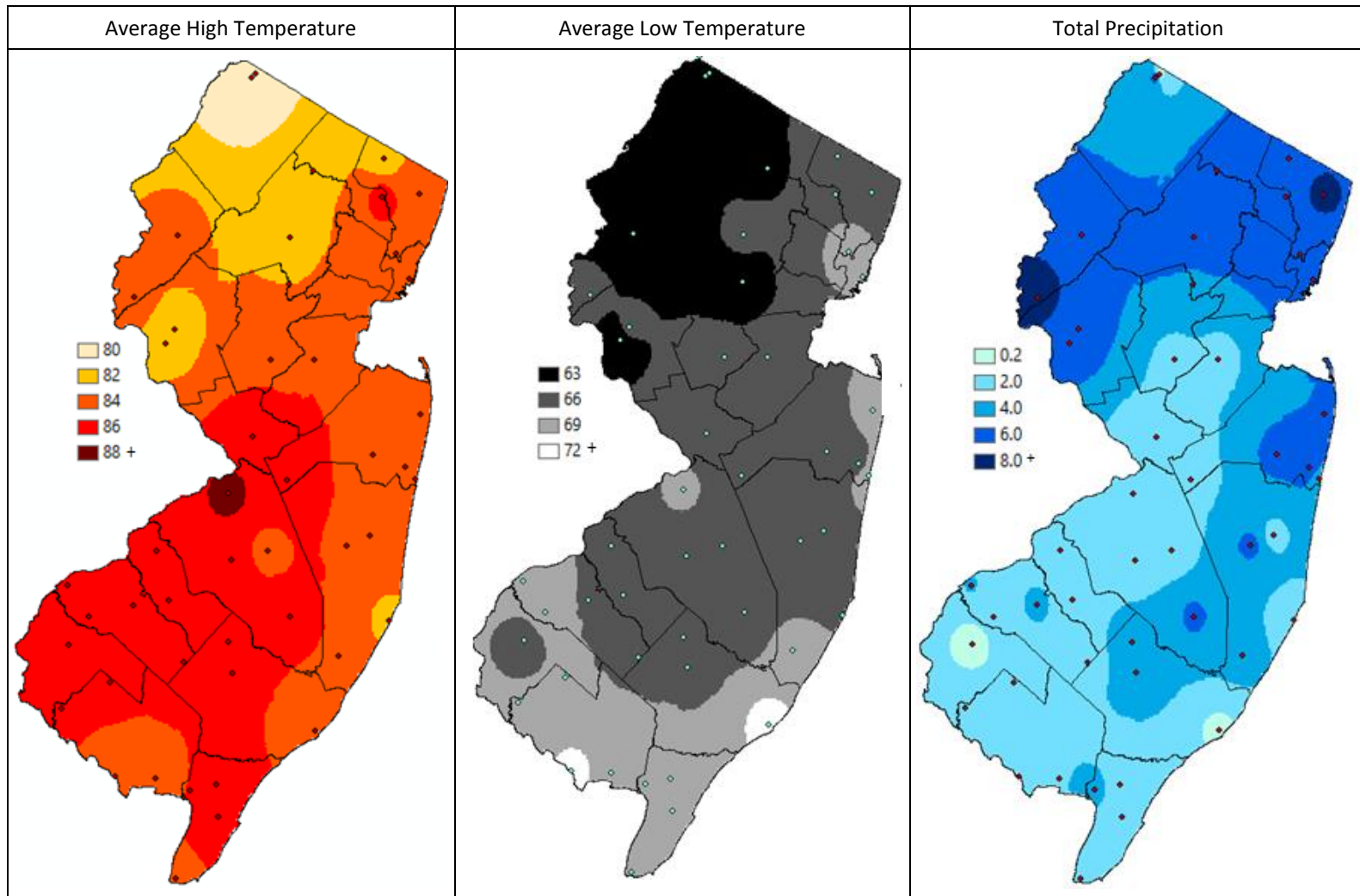
**Summary Table – Week 35**

Region	<i>Aedes vexans</i>			<i>Culex Mix</i>			<i>Coquillettidia perturbans</i>			<i>Aedes sollicitans</i>		
	This Week	Average*	Increase	This Week	Average*	Increase	This Week	Average*	Increase	This Week	Average*	Increase
Agricultural	0.69	0.94	0	0.45	4.37	0	0.00	0.03	0	0.00	0.03	0
Coastal	1.38	3.95	0	0.24	5.52	0	0.00	0.08	0	0.00	2.32	0
Delaware Bayshore	0.00	1.47	0	0.00	9.10	0	0.00	0.37	0	0.00	0.31	0
Delaware River Basin	0.00	3.53	0	0.00	2.26	0	0.00	0.17	0	0.00	0.01	0
New York Metro	4.90	0.37	4	4.71	2.51	2	0.07	0.08	0	0.23	0.23	0
North Central Rural	0.21	0.22	0	0.57	0.41	1	0.00	0.02	0	0.00	0.00	0
Northwest Rural	0.00	1.24	0	0.00	1.54	0	0.00	0.02	0	0.00	0.00	0
Philadelphia Metro	0.00	1.62	0	0.00	1.26	0	0.00	0.10	0	0.00	0.00	0
Pinelands	0.00	0.33	0	0.00	1.85	0	0.00	0.26	0	0.00	0.03	0
Suburban Corridor	0.96	0.61	2	0.57	0.31	2	0.00	3.53	0	0.00	0.00	0

\*Averages represent data from, at most, the previous 5 years. Increase is a scale of current values from historical values where no difference or a decrease is represented by 0 (blue), up to 50% greater difference by 1 (green), up to 100% greater difference by 2 (yellow), up to 150% greater difference by 3 (orange) and greater than 150% increase by 4 (red). White cells in the increase column denote increases from an historic zero and thus no value can be appropriately given. nd=no data reported.

State Summary: Population data for this week is low due to the holiday. As counties send in their data for the past week, numbers will become more reliable and increases in estimates are to be expected. *Aedes vexans* numbers in the New York Metropolitan region was significantly higher than recent historical averages while minor increases were also seen in the Suburban Corridor. *Culex Mix* species showed minor increases in the New York Metropolitan, North Central Rural and the Suburban Corridor.

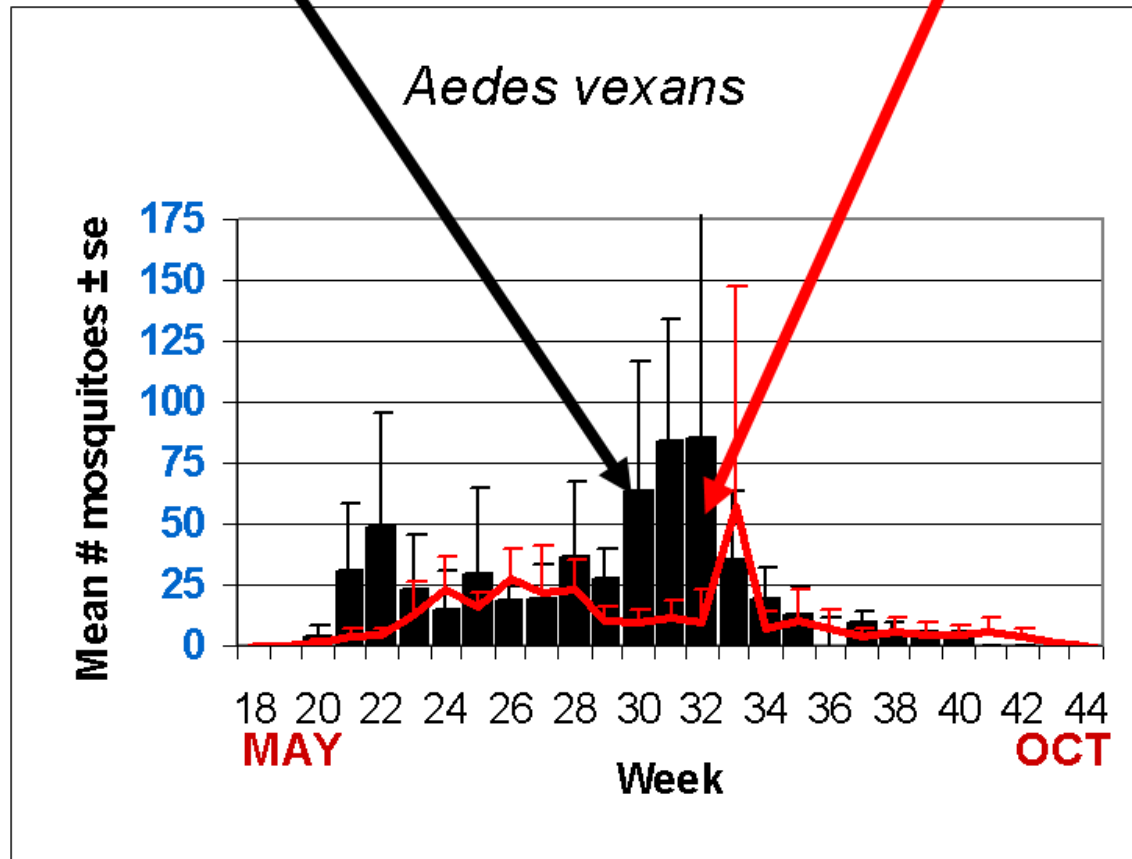
## Climate Factors



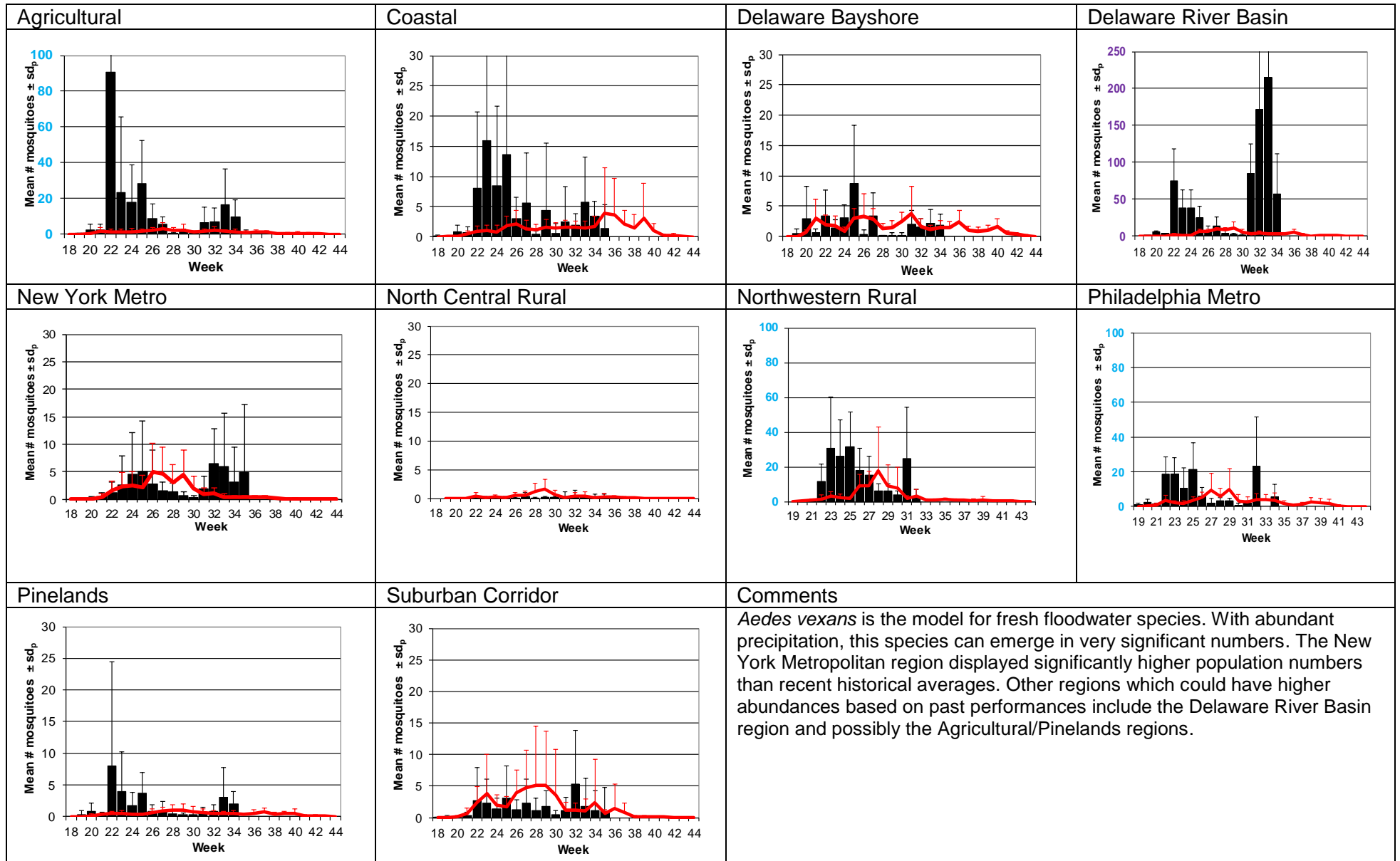
The three figures show the interpolation of average maximum (°F) and minimum temperature (°F) and total precipitation (inches) for 30 days prior to 1 September 2018 in New Jersey. Data points are from about 53 weather stations maintained through the New Jersey Weather & Climate Network and the State Climatologist. Interpolation between points was performed using ArcMap 10.1.

**The Species Graphs:** The species graph pages include a graph with two plots for each of the ten regions defined on the first page (Agricultural, Coastal, Delaware Bayshore, Delaware River, New York Metro, North-Central, Northwestern, Philadelphia Metro, Pinelands, and Suburban Corridor). Below is an example of one graph from one species within one region. The bar plot show the average number of mosquitoes per trap within the region (weekly means) and line plots show the historical trend as the average number of mosquitoes from the previous 5 years (5-year average). In general, historical data are running means from the previous 5 years, but on occasion, will include data from fewer years. Adjustments are made to account for year discrepancies. Data for this week are from Hunterdon, Monmouth, Passaic, Somerset, and Union counties. Data for the previous week are from Atlantic, Burlington, Cape May, Cumberland, Hunterdon, Middlesex, Monmouth, Ocean, Passaic, Salem, Somerset, and Union counties.

## Weekly Means Against 5-year Average

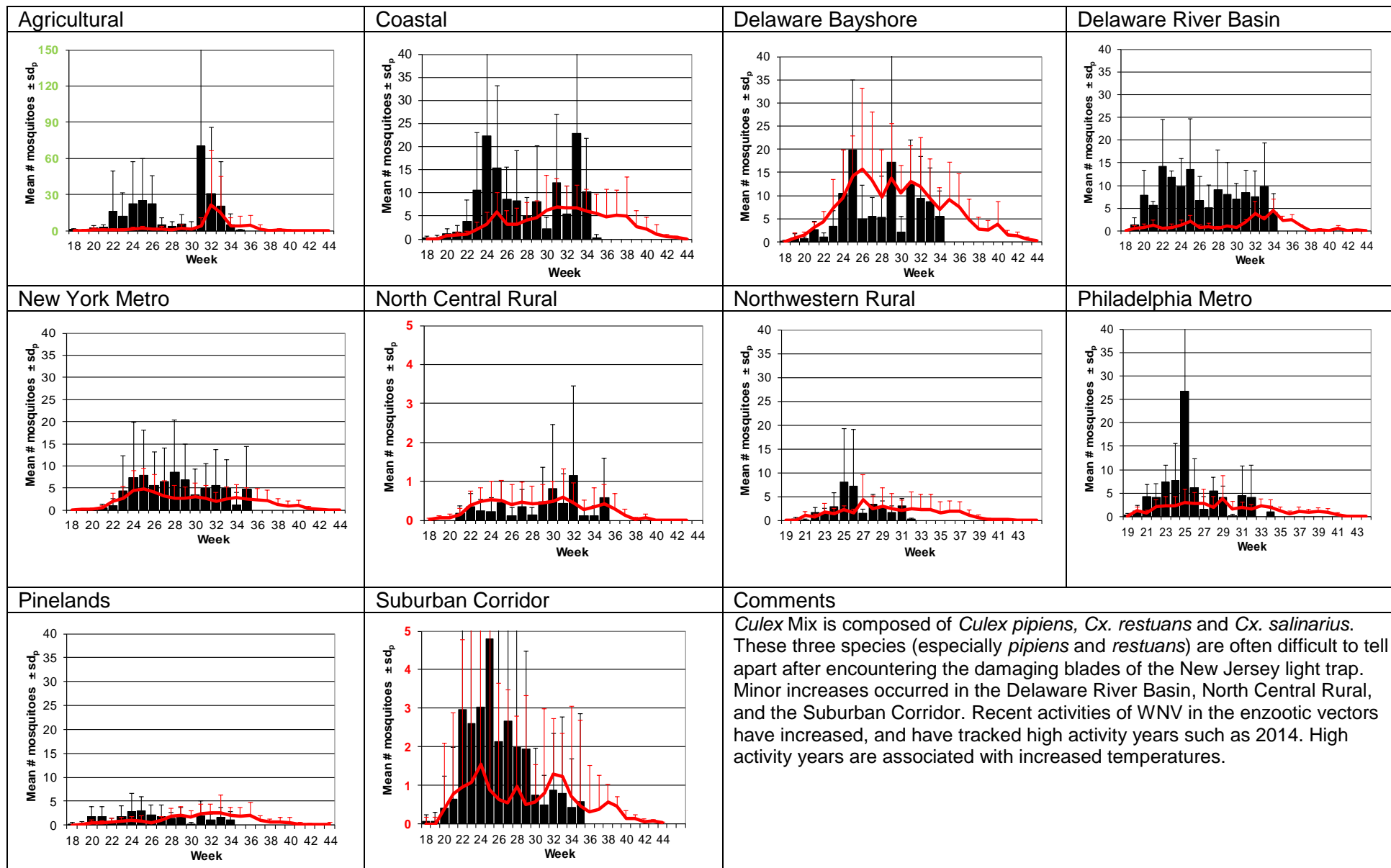


# *Aedes vexans* - Fresh Floodwater Species Multivoltine Aedine (*Ae. vexans* Type)



# Culex Mix – Permanent Water Species

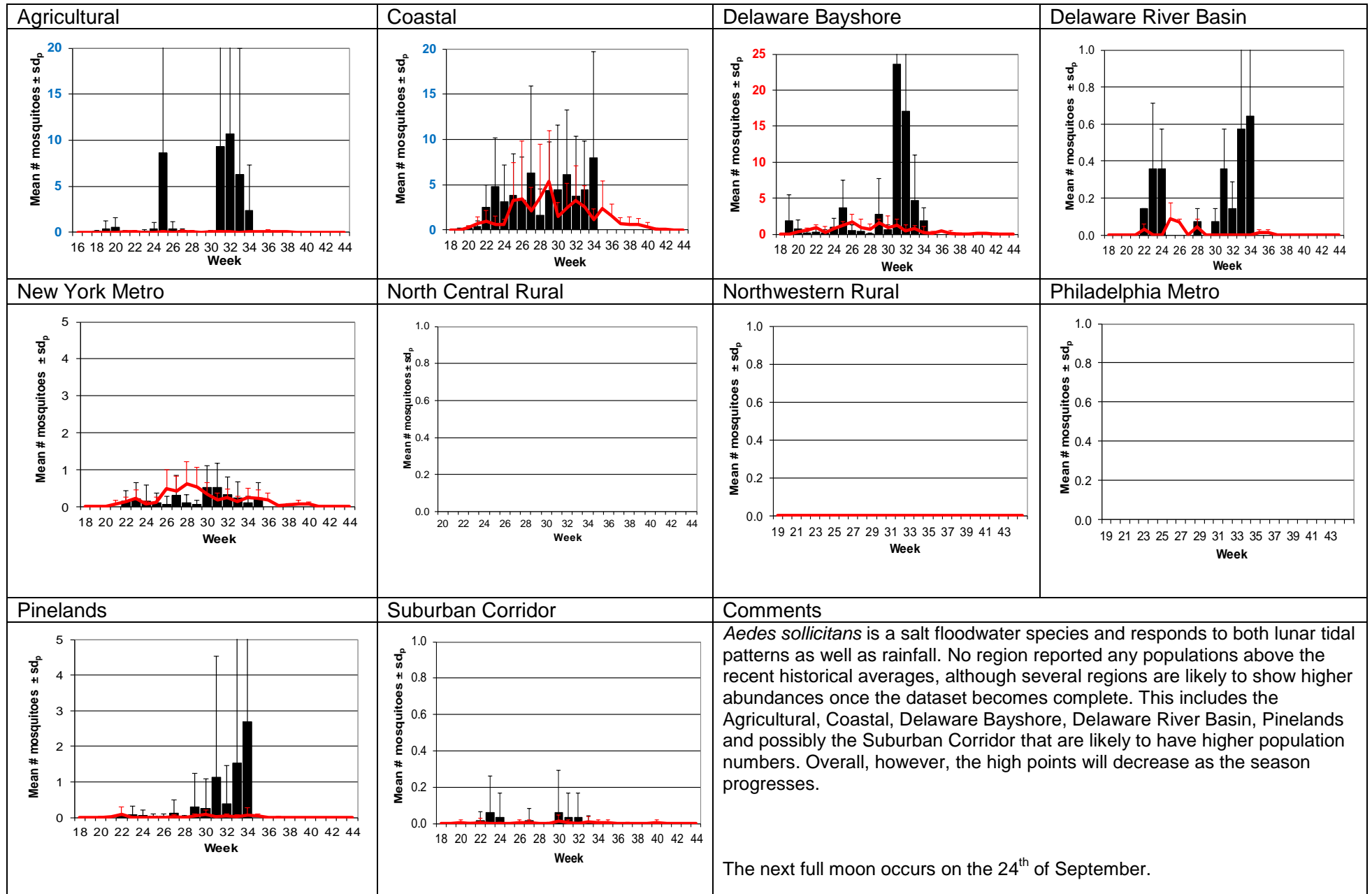
## Multivoltine *Culex/Anopheles* (*Cx. pipiens* Type)



# *Culiseta melanura* – Miscellaneous Group Unique (*Cs. melanura* Type)

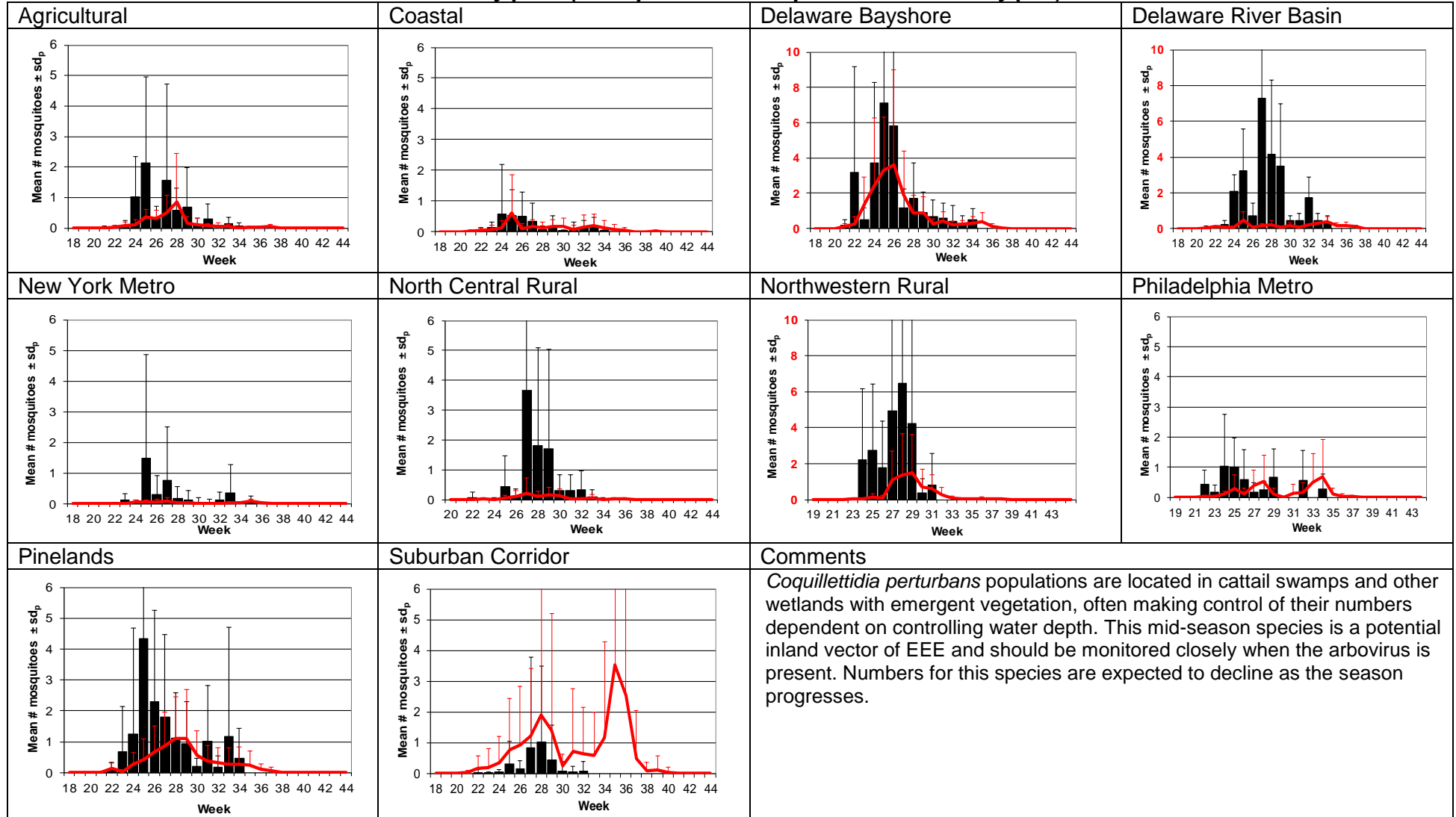
<p><b>Agricultural</b></p>	<p><b>Coastal</b></p>	<p><b>Delaware Bayshore</b></p>	<p><b>Delaware River Basin</b></p>
<p><b>New York Metro</b></p>	<p><b>North Central Rural</b></p>	<p><b>Northwestern Rural</b></p>	<p><b>Philadelphia Metro</b></p>
<p><b>Pinelands</b></p>	<p><b>Suburban Corridor</b></p>	<p><b>Comments</b></p> <p><i>Culiseta melanura</i> is the enzootic ornithophilic vector of eastern equine encephalitis. Population numbers are tracking low in the Delaware Bayshore region, but appear to be increasing for the post-midseason peak representing the second generation of the year in their preferred habitats of the Coastal and Pinelands. With two positive horses reported to date, due diligence for this species and associated bridge vectors should continue to be given.</p> <p>All horse owners should make sure their horses are up to date on the vaccination schedules: <a href="http://www.aep.org/custdocs/adultvaccinationchart.pdf">http://www.aep.org/custdocs/adultvaccinationchart.pdf</a></p>	

# Aedes sollicitans - Salt Floodwater Species Multivoltine Aedine (Ae. sollicitans Type)



# *Coquillettidia perturbans*

## Monotypic (*Coquillettidia perturbans* Type)



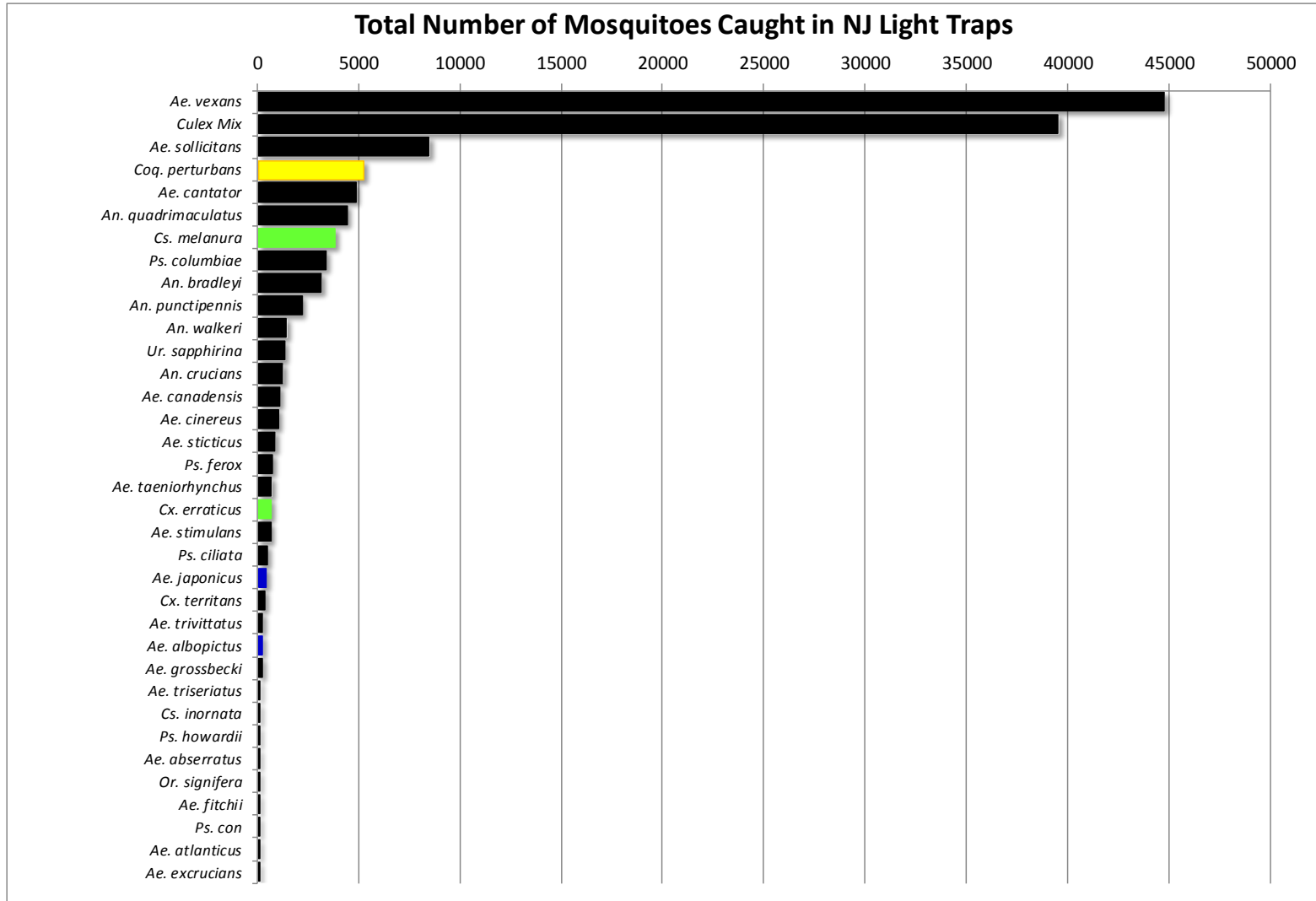


WNV

EEE

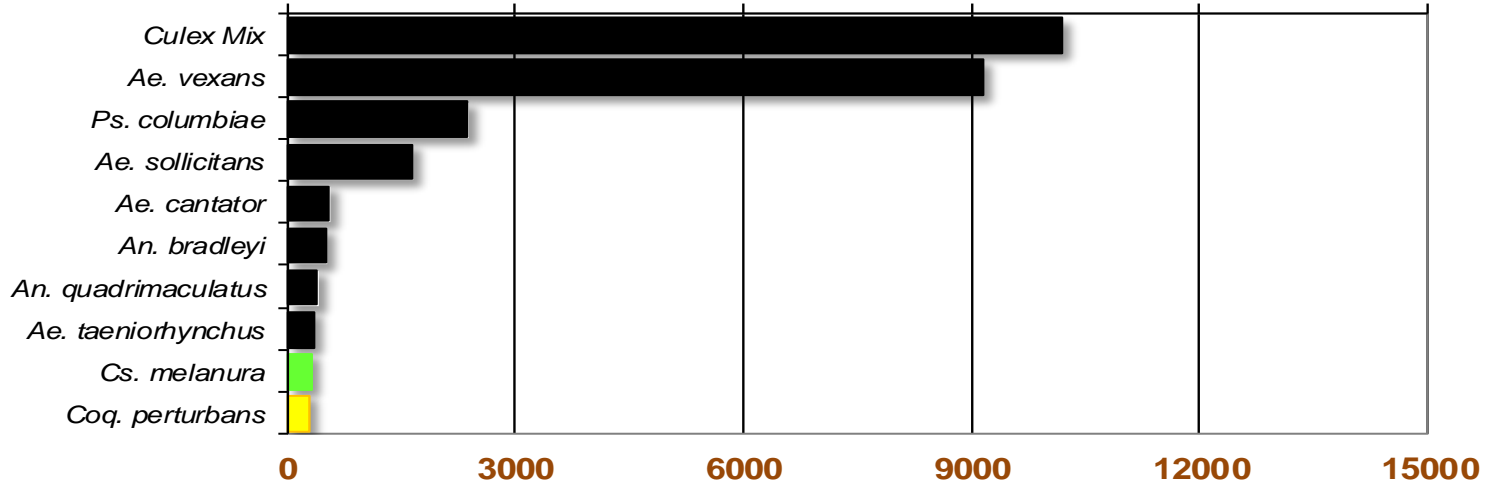
**Top Ten Mosquito Species/Region** - ■ *Ae. albopictus*, ■ *Ae. japonicus* (invasives); ■ *Cs. melanura* or *Cx. erraticus* ■ *Coq. perturbans*

Note: In early season when fewer species are caught, graphs may show less than ten species/region or 25 statewide.



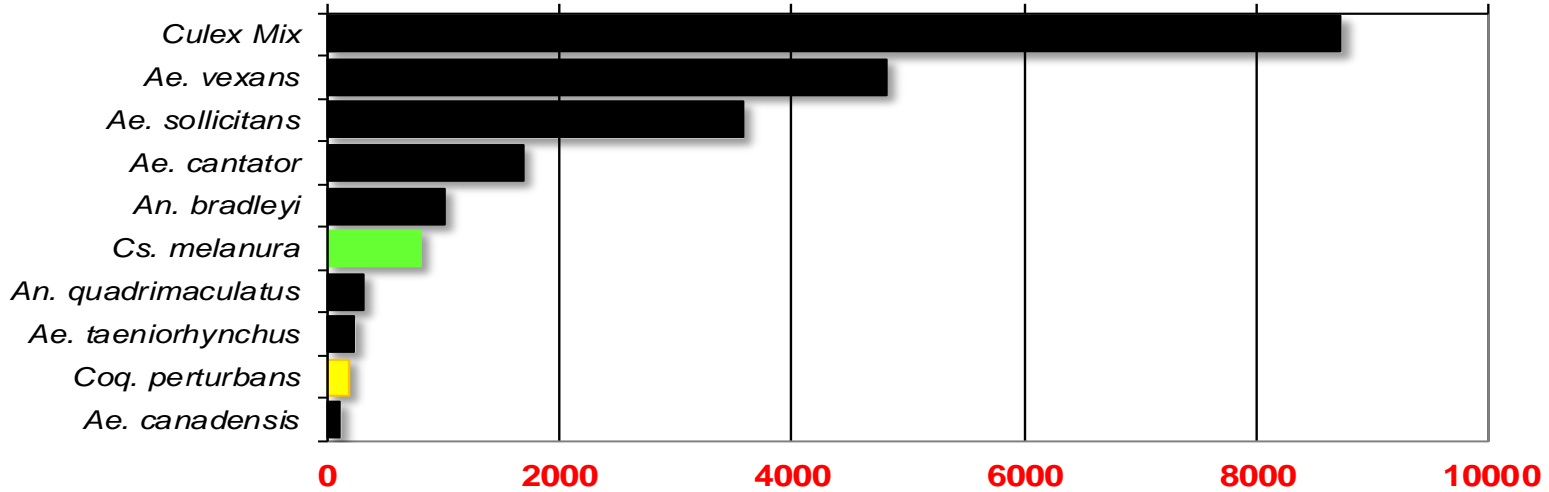
# Agricultural

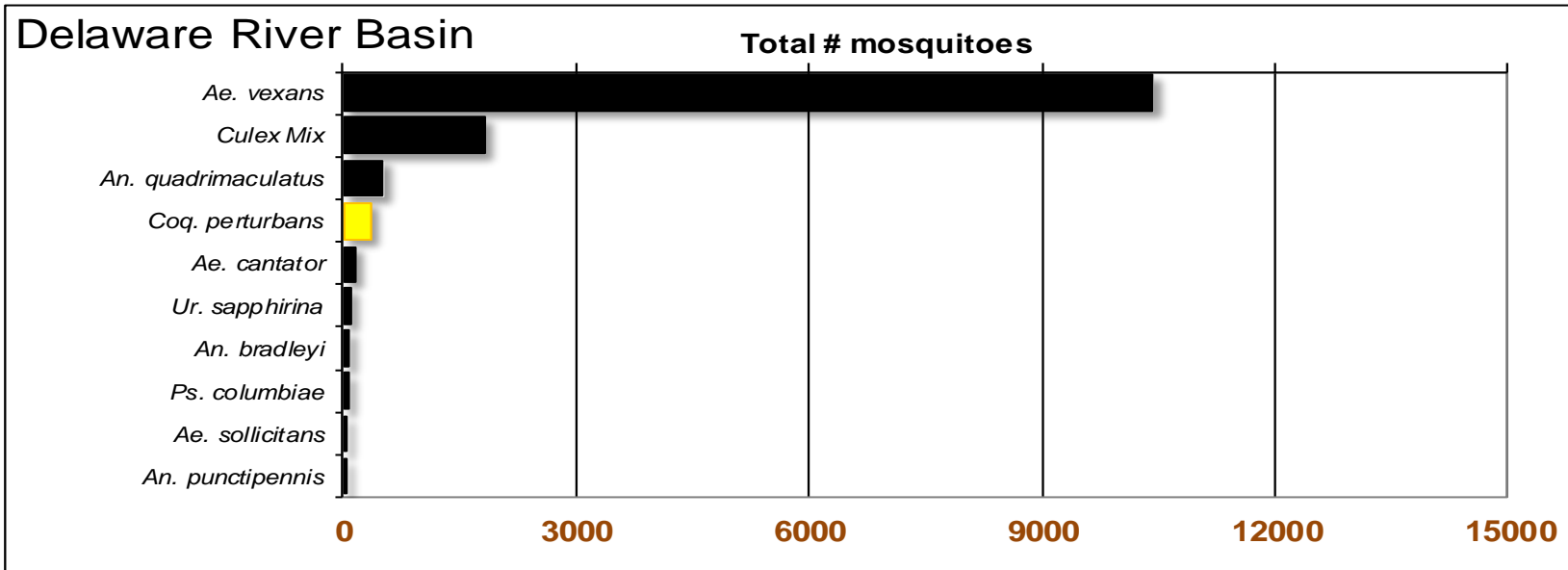
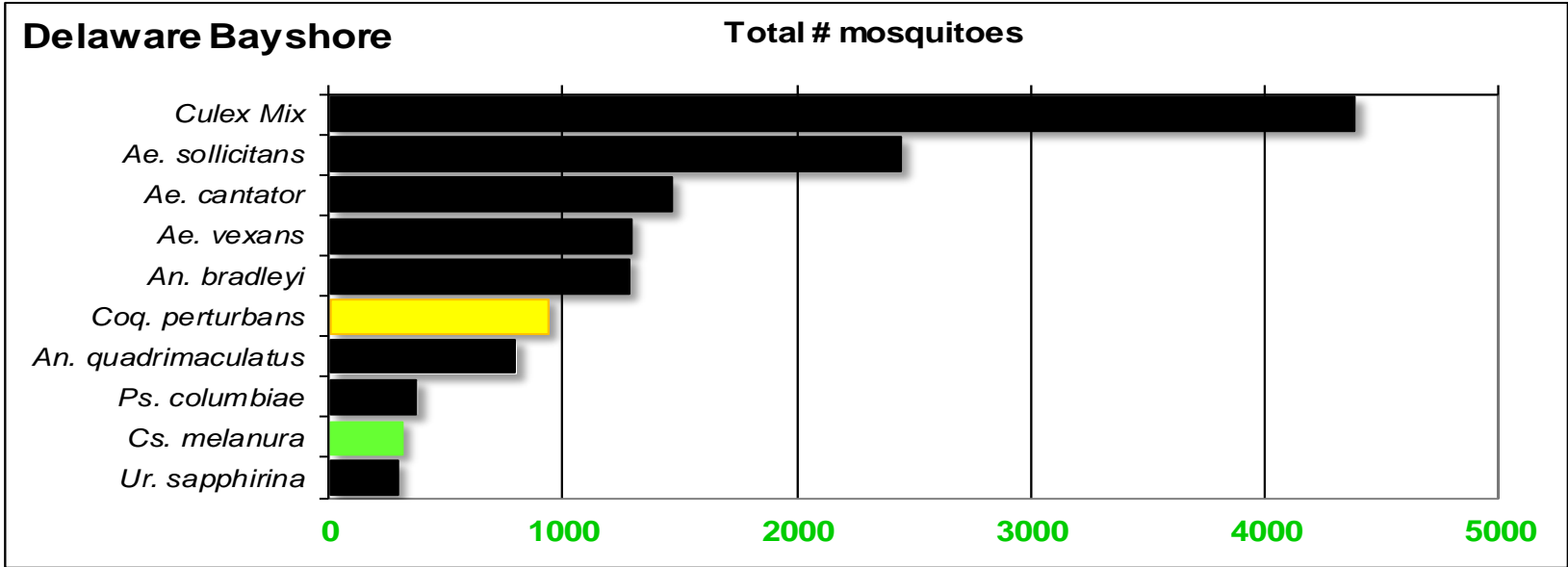
Total # mosquitoes



# Coastal

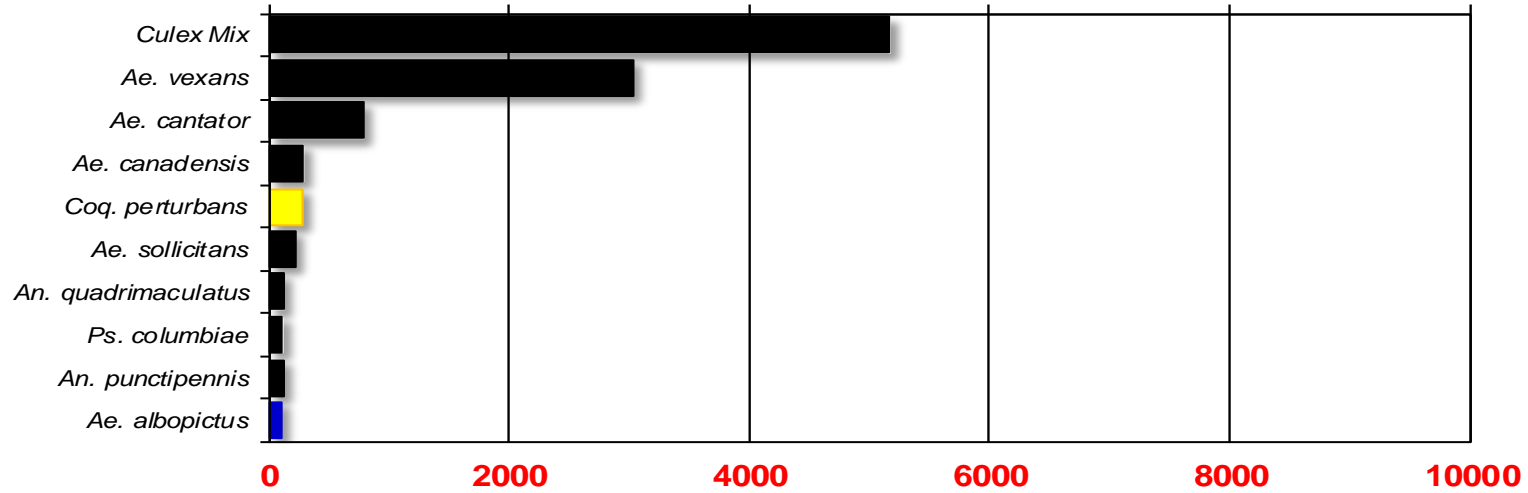
Total # mosquitoes





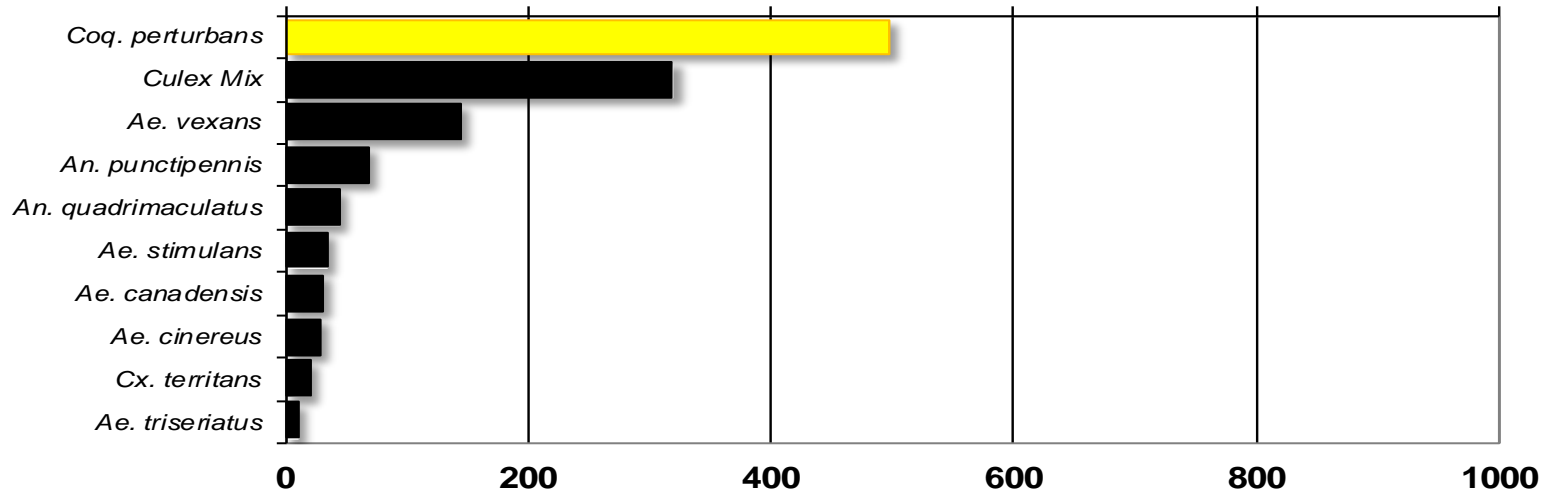
## New York Metropolitan

Total # mosquitoes



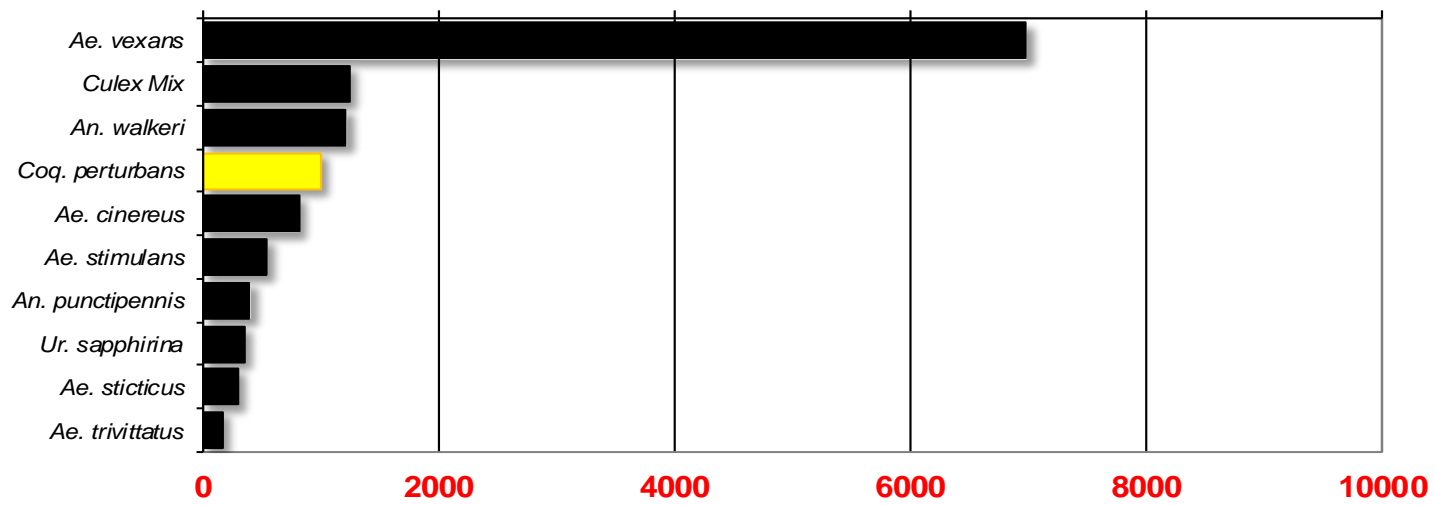
## North Central Rural

Total # mosquitoes



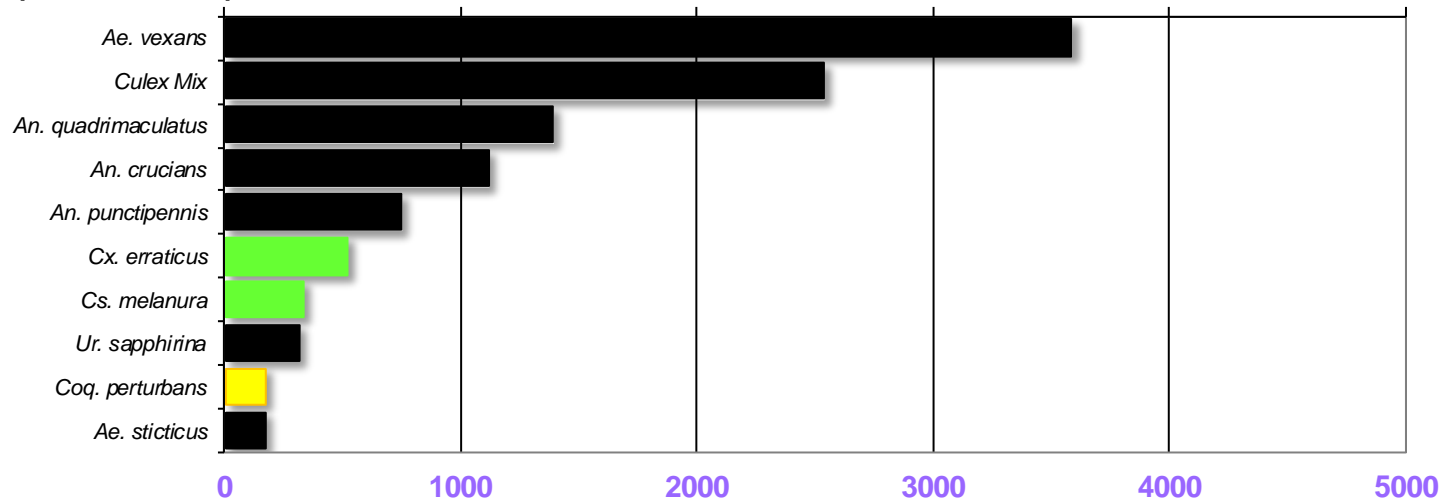
## Northwest Rural

Total # mosquitoes



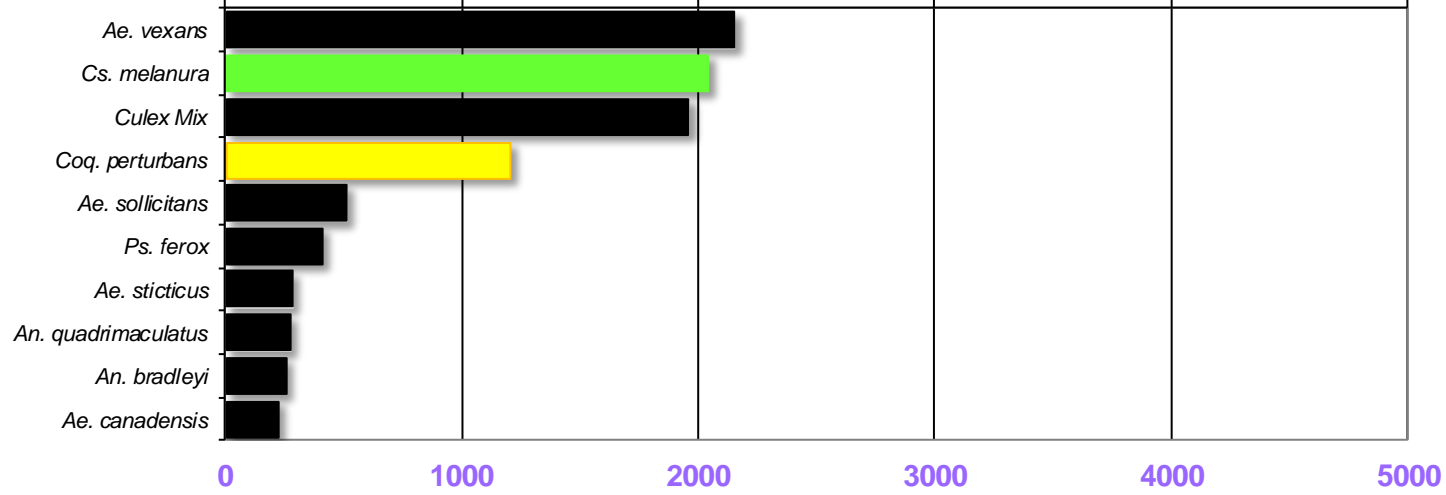
## Philadelphia Metropolitan

Total # mosquitoes



# Pinelands

Total # mosquitoes



# Suburban Corridor

Total # mosquitoes

