

NEW JERSEY ADULT MOSQUITO SURVEILLANCE Report

7 July to 13 July 2019, CDC Week 28

Prepared by Lisa M. Reed and Dina Fonseca
Center for Vector Biology



This New Jersey Agricultural Experiment Station report is supported by Rutgers University, Hatch funds, funding from the NJ State Mosquito Control Commission and with the participation of the 21 county mosquito control agencies of New Jersey.

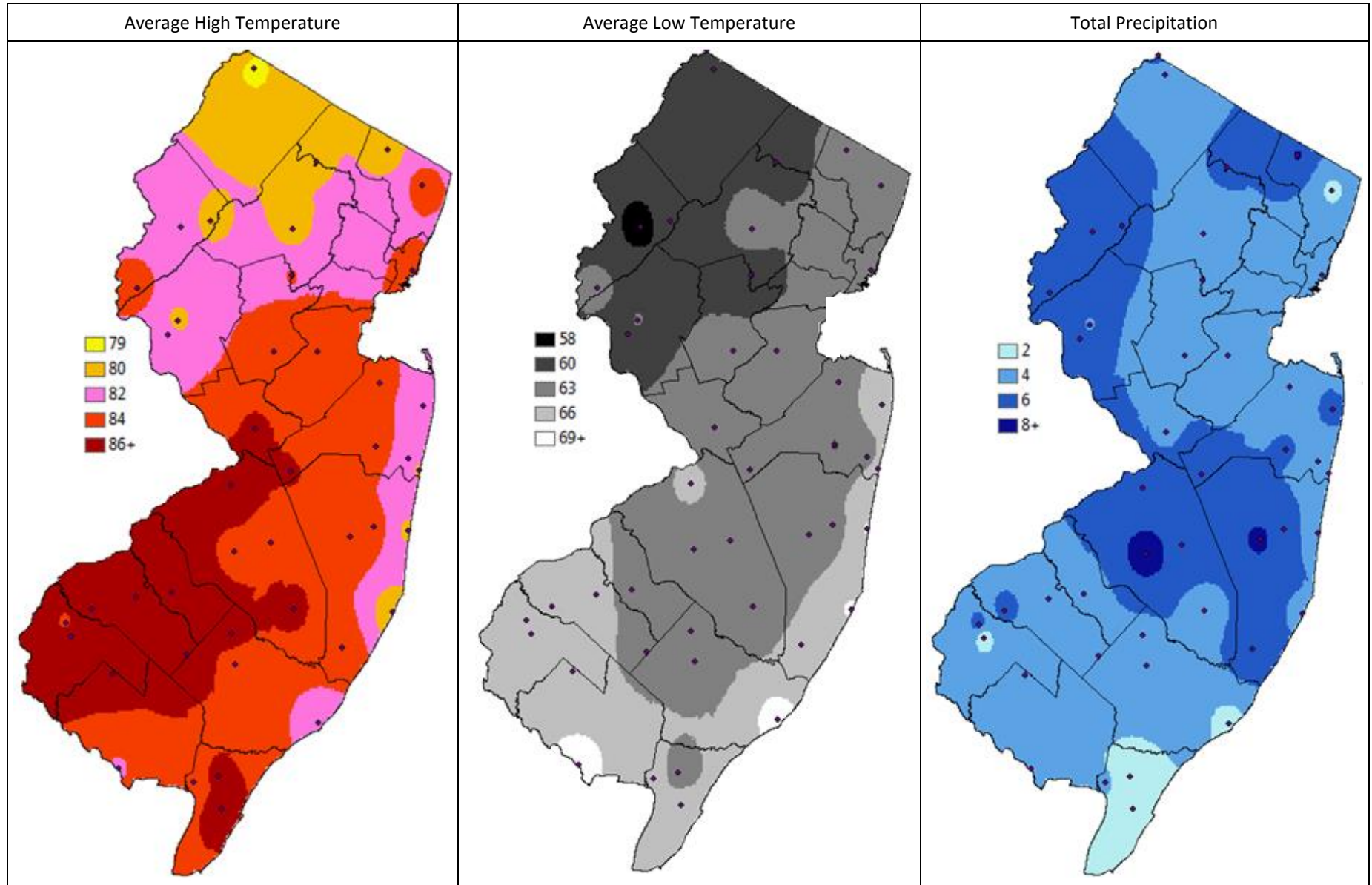
Summary Table –begin to Week 28

Region	<i>Aedes vexans</i>			<i>Culex Mix</i>			<i>Coquillettidia perturbans</i>			<i>Aedes sollicitans</i>		
	This Week	Average*	Increase	This Week	Average*	Increase	This Week	Average*	Increase	This Week	Average*	Increase
Agricultural	1.81	5.00	0	9.98	9.44	1	0.10	1.90	0	0.00	0.15	0
Coastal	1.46	3.13	0	5.86	7.38	0	0.25	0.48	0	3.56	3.53	0
Delaware Bayshore	0.00	1.21	0	0.00	12.93	0	0.00	3.31	0	0.00	2.83	0
Delaware River Basin	6.64	16.29	0	22.64	7.57	4	0.64	2.40	0	0.00	0.01	0
New York Metro	0.70	3.86	0	2.30	9.14	0	0.09	0.33	0	0.01	0.46	0
North Central Rural	0.11	0.49	0	0.23	0.42	0	0.25	0.41	0	0.00	0.00	0
Northwest Rural	1.09	6.04	0	0.03	3.97	0	0.69	1.95	0	0.00	0.00	0
Philadelphia Metro	3.57	7.54	0	1.71	4.41	0	5.71	0.62	4	0.00	0.00	0
Pinelands	0.95	1.40	0	1.32	3.33	0	2.31	2.08	1	0.00	0.03	0
Suburban Corridor	1.03	2.19	0	0.64	1.71	0	0.25	0.87	0	0.00	0.01	0

*Averages represent data from, at most, the previous 5 years. Increase is a scale of current values from historical values where no difference or a decrease is represented by 0 (blue), up to 50% greater difference by 1 (green), up to 100% greater difference by 2 (yellow), up to 150% greater difference by 3 (orange) and greater than 150% increase by 4 (red). White cells in the increase column denote increases from an historic zero and thus no value can be appropriately given. nd=no data reported.

State Summary: Populations of pestiferous species continue to be at or below historical averages throughout much of the state. *Culex Mix* populations were significantly higher in the Delaware River Basin and only mildly higher in the Agricultural region. Similarly, *Coquillettidia perturbans* was significantly higher in the Philadelphia Metropolitan region and only mildly above historical values in the Pinelands.

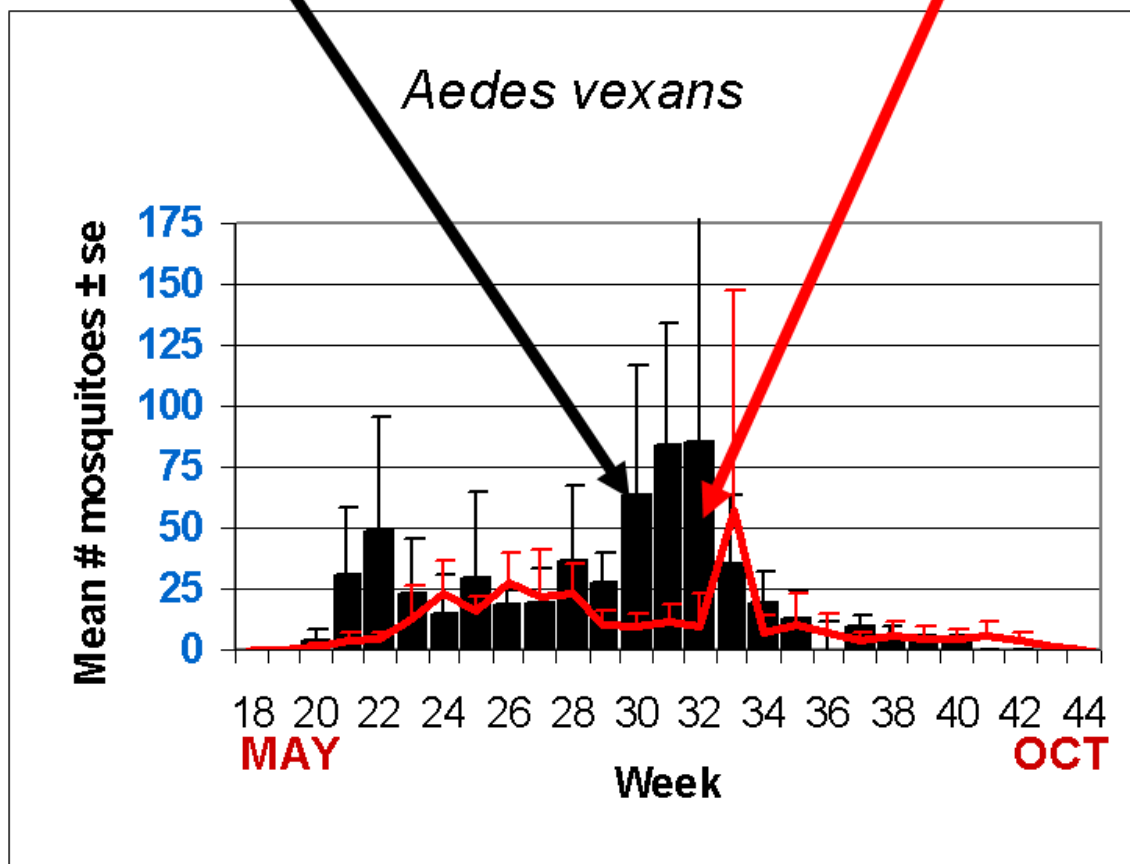
Climate Factors



The three figures show the interpolation of average maximum (°F) and minimum temperature (°F) and total precipitation (inches) for 30 days prior to 13 July 2019 in New Jersey. Data points are from about 50 weather stations maintained through the New Jersey Weather & Climate Network and the State Climatologist. Interpolation between points was performed using ArcMap 10.1.

The Species Graphs: The species graph pages include a graph with two plots for each of the ten regions defined on the first page (Agricultural, Coastal, Delaware Bayshore, Delaware River, New York Metro, North-Central, Northwestern, Philadelphia Metro, Pinelands, and Suburban Corridor). Below is an example of one graph from one species within one region. The bar plot show the average number of mosquitoes per trap within the region (weekly means) and line plots show the historical trend as the average number of mosquitoes from the previous 5 years (5-year average). In general, historical data are running means from the previous 5 years, but on occasion, will include data from fewer years. Adjustments are made to account for year discrepancies. Data for this week are from Atlantic, Burlington, Hudson, Hunterdon, Mercer, Monmouth, Passaic, Salem, Somerset, and Warren counties. Data for the previous week are from Atlantic, Burlington, Cape May, Cumberland, Essex, Hudson, Hunterdon, Mercer, Monmouth, Ocean, Passaic, Salem, Somerset, Sussex, Union, and Warren counties.

Weekly Means Against 5-year Average

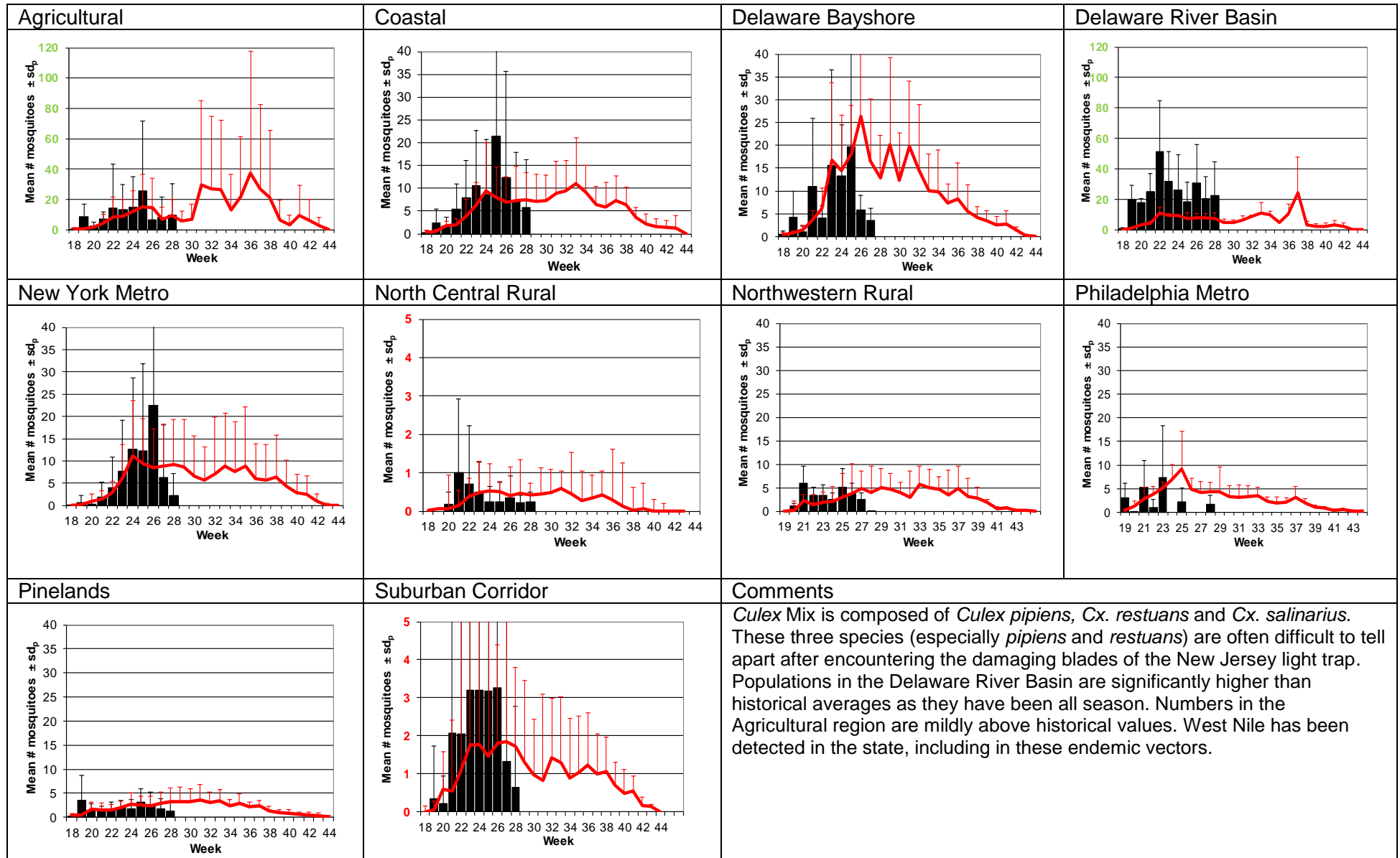


Aedes vexans - Fresh Floodwater Species Multivoltine Aedine (Ae. vexans Type)

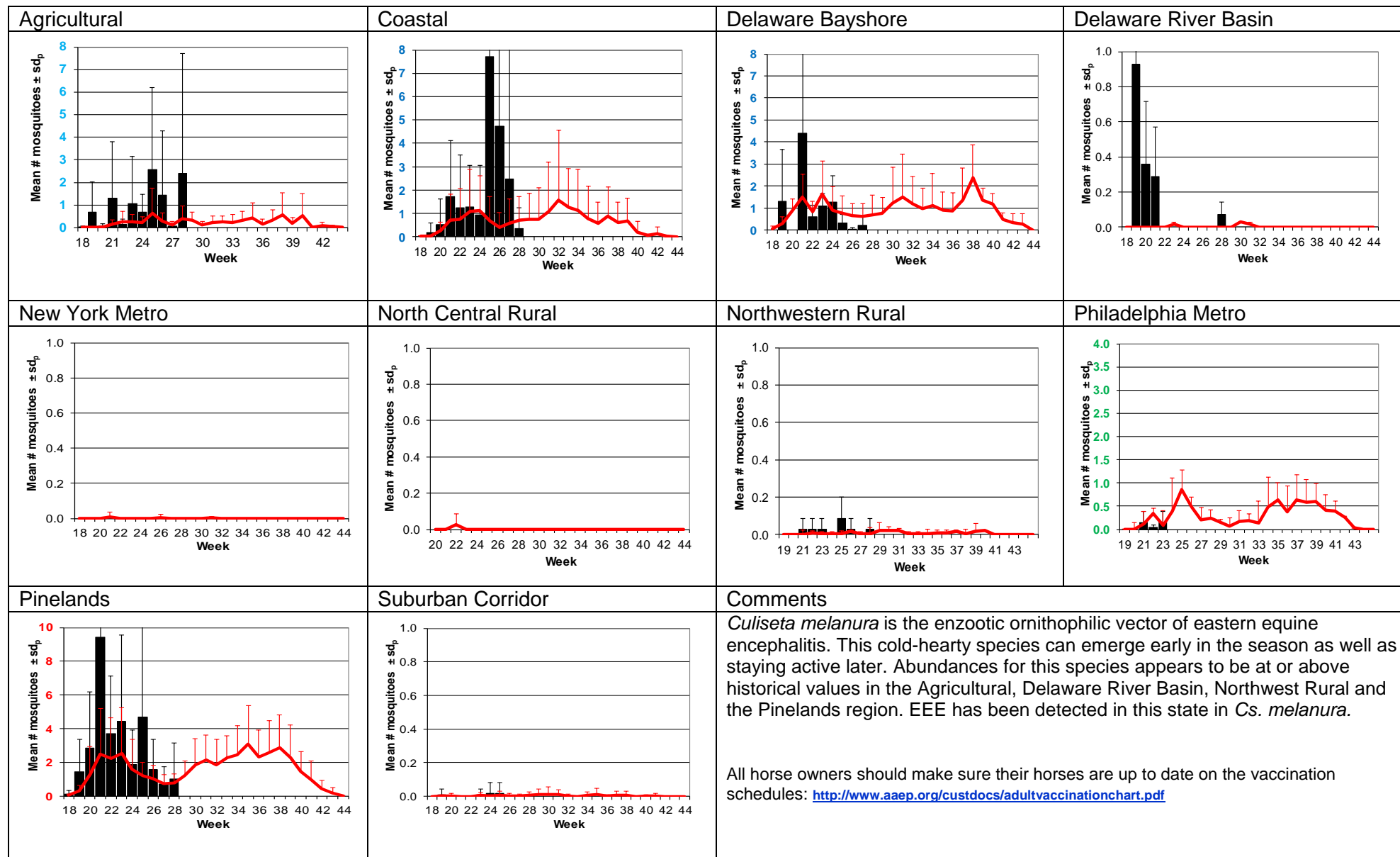
Agricultural	Coastal	Delaware Bayshore	Delaware River Basin
New York Metro	North Central Rural	Northwestern Rural	Philadelphia Metro
Pinelands	Suburban Corridor	Comments	
		<p><i>Aedes vexans</i> is the model for fresh floodwater species. With abundant precipitation, this species can emerge in very significant numbers. This floodwater species continues to show abundances below historical averages despite the significant amounts of precipitation incurred in the previous month. Only in the Northwest region were populations of any significance for an extended period of time. It is possible that if eggs have not had the chance to dessicate, they will not be as likely to hatch under what might seem like appropriate circumstances.</p>	

Culex Mix – Permanent Water Species

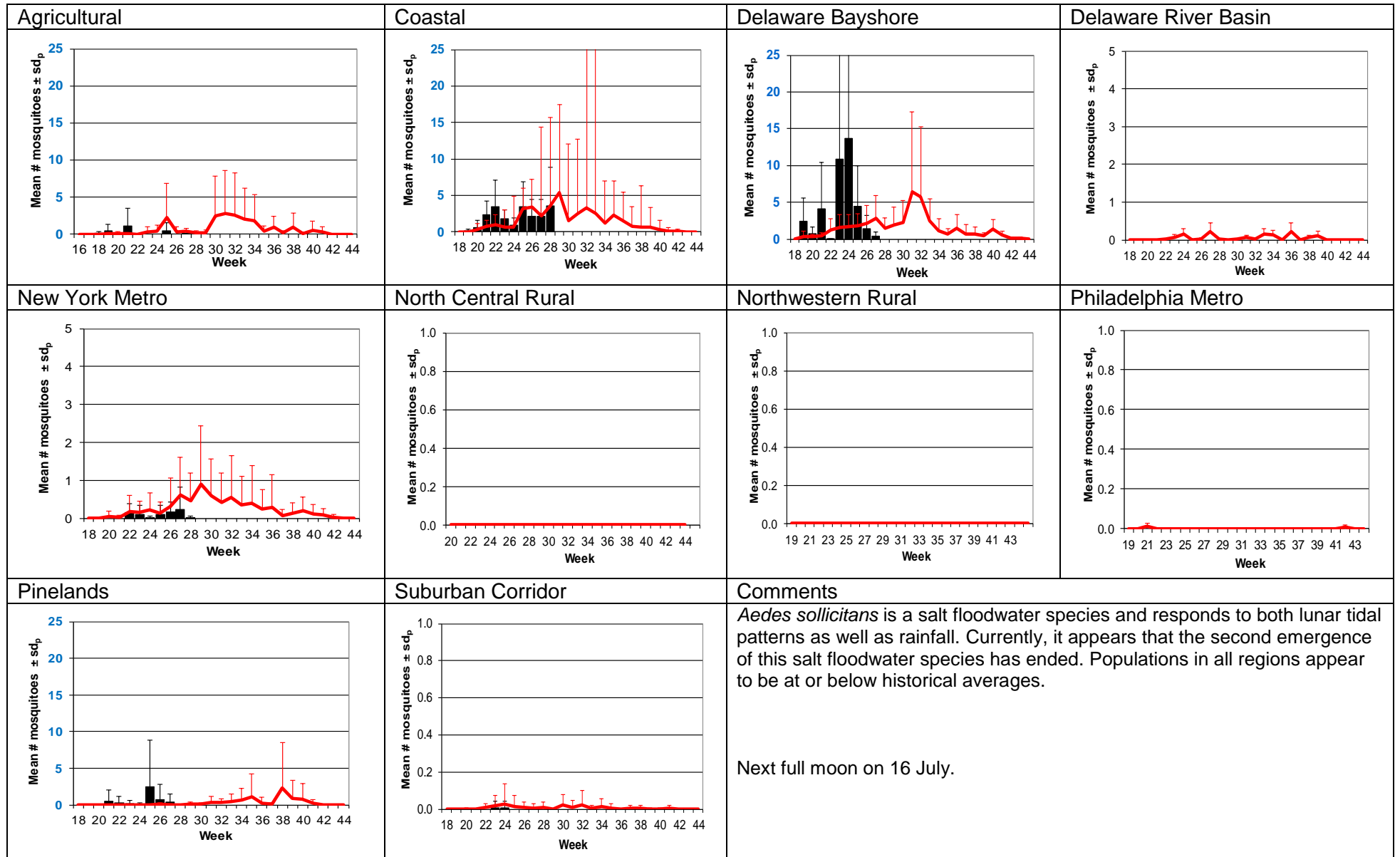
Multivoltine *Culex/Anopheles* (*Cx. pipiens* Type)



Culiseta melanura – Miscellaneous Group Unique (*Cs. melanura* Type)

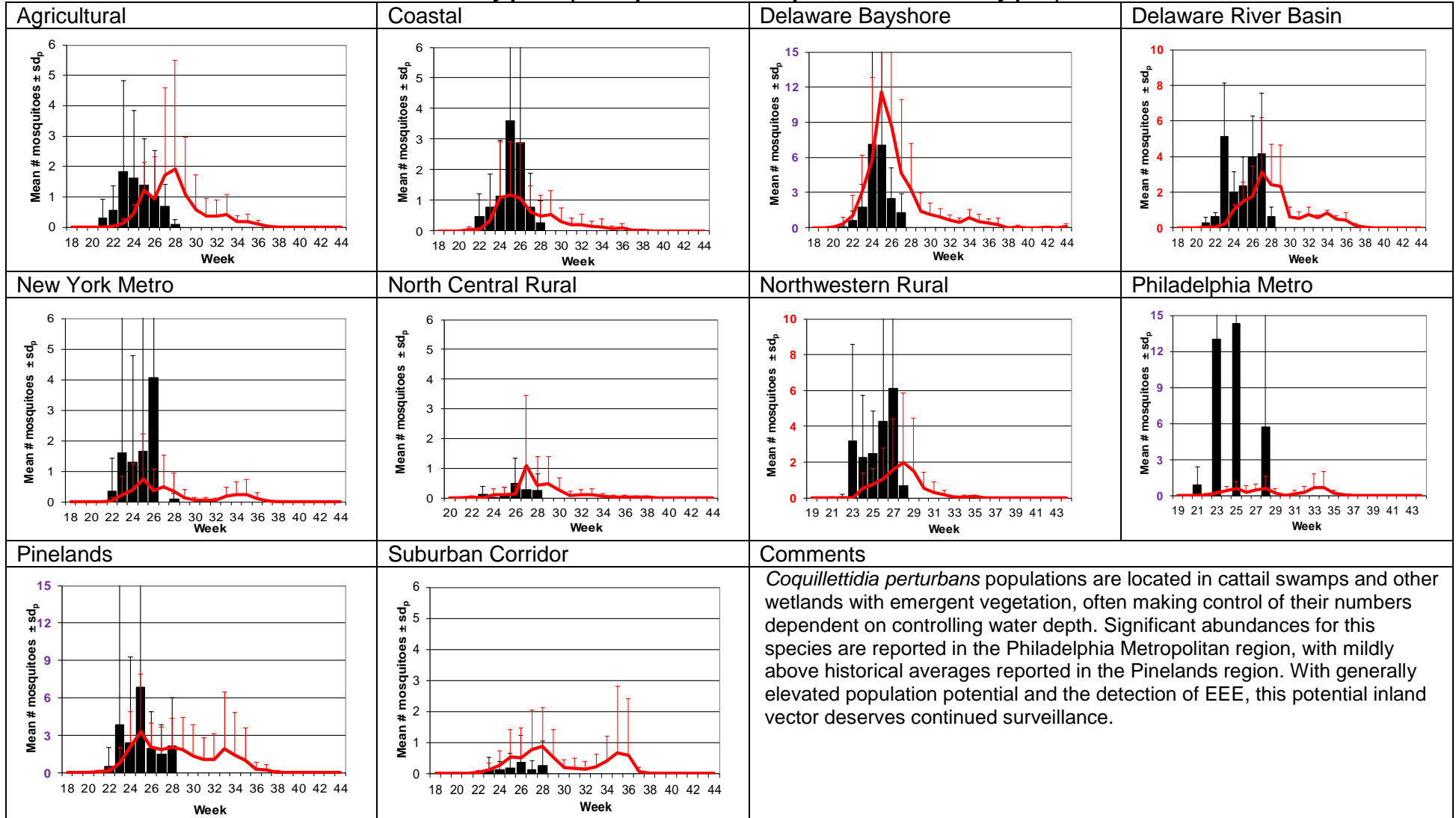


Aedes sollicitans - Salt Floodwater Species Multivoltine Aedine (Ae. sollicitans Type)



Coquillettidia perturbans

Monotypic (*Coquillettidia perturbans* Type)

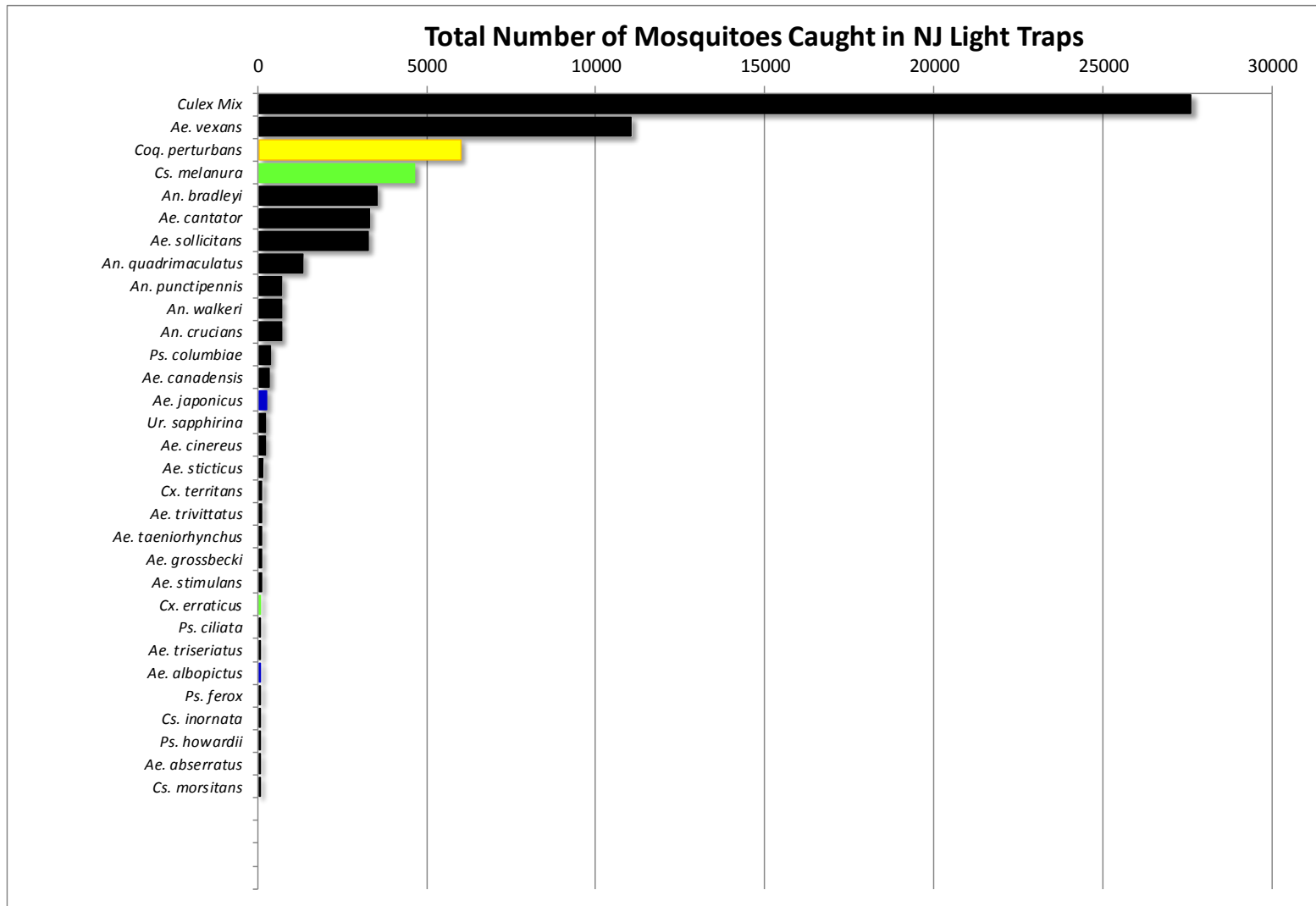


WNV

EEE

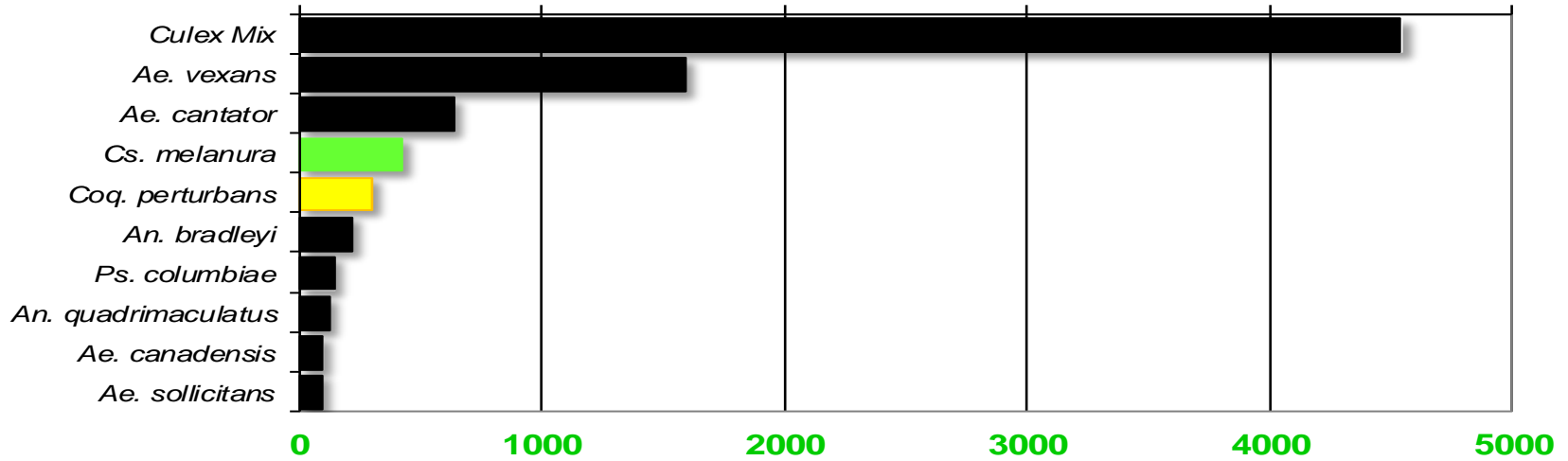
Top Ten Mosquito Species/Region - ■ *Ae. albopictus*, ■ *Ae. japonicus* (invasives); ■ *Cs. melanura* or *Cx. erraticus* ■ *Coq. perturbans*

Note: In early season when fewer species are caught, graphs may show less than ten species/region or 25 statewide.



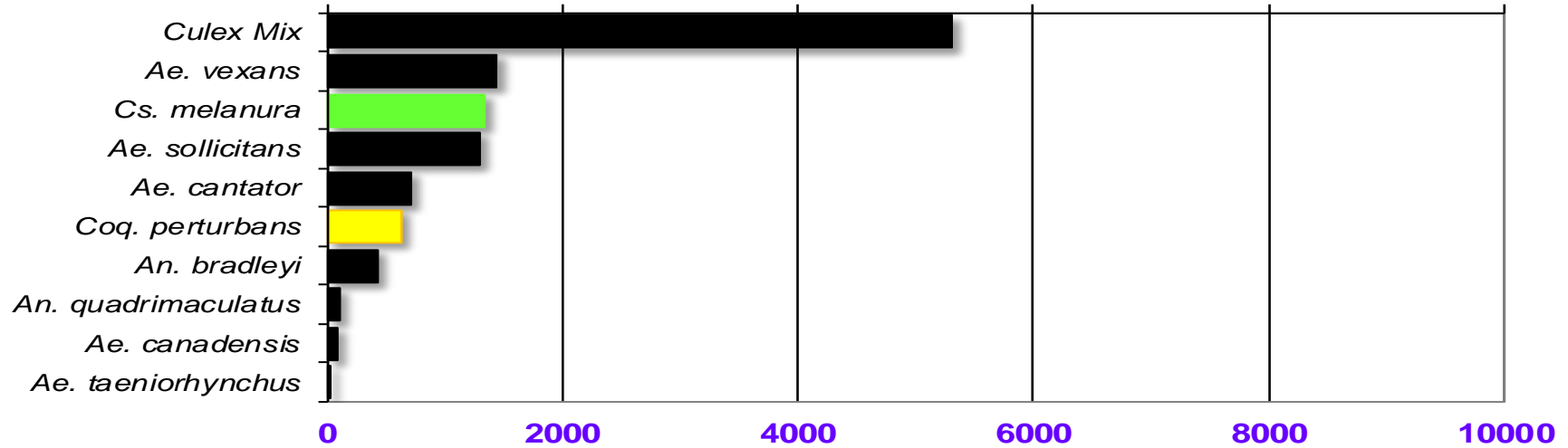
Agricultural

Total # mosquitoes



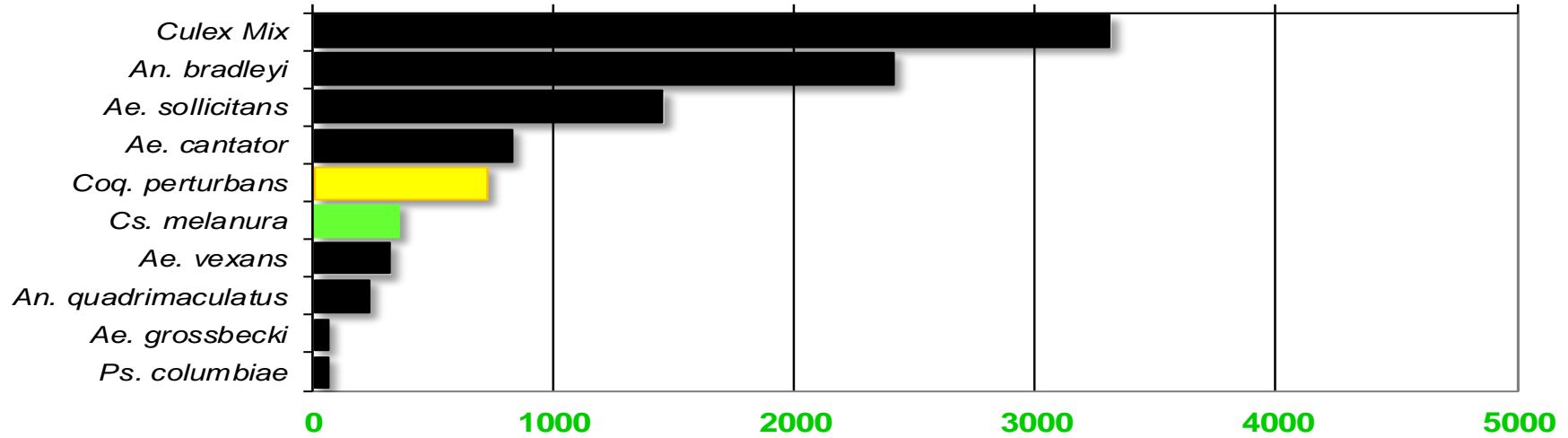
Coastal

Total # mosquitoes



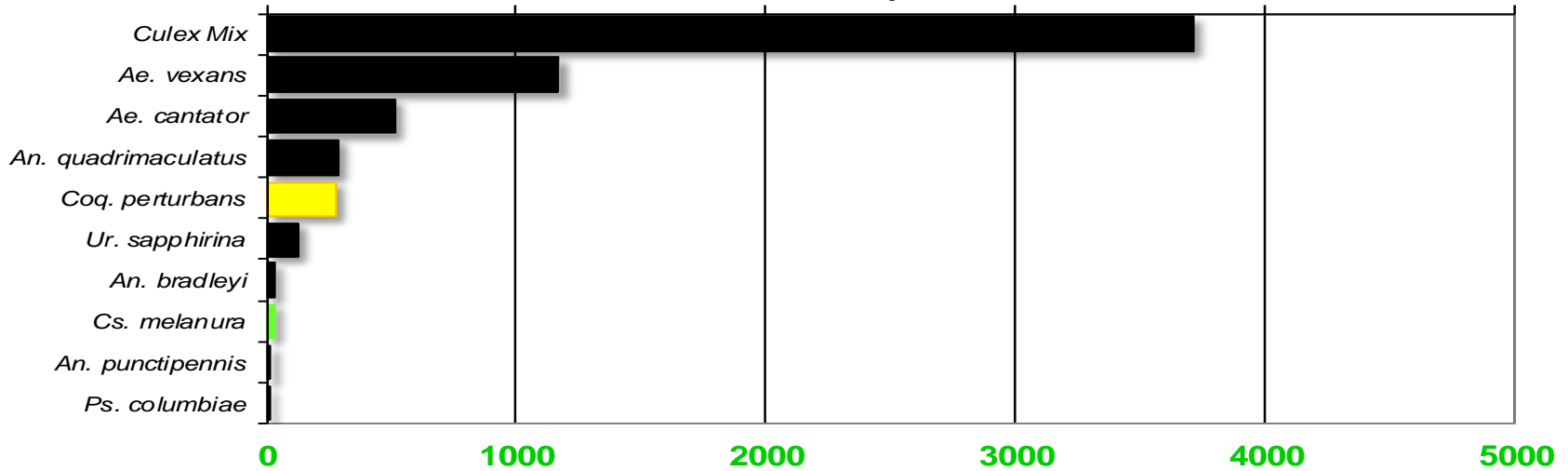
Delaware Bayshore

Total # mosquitoes



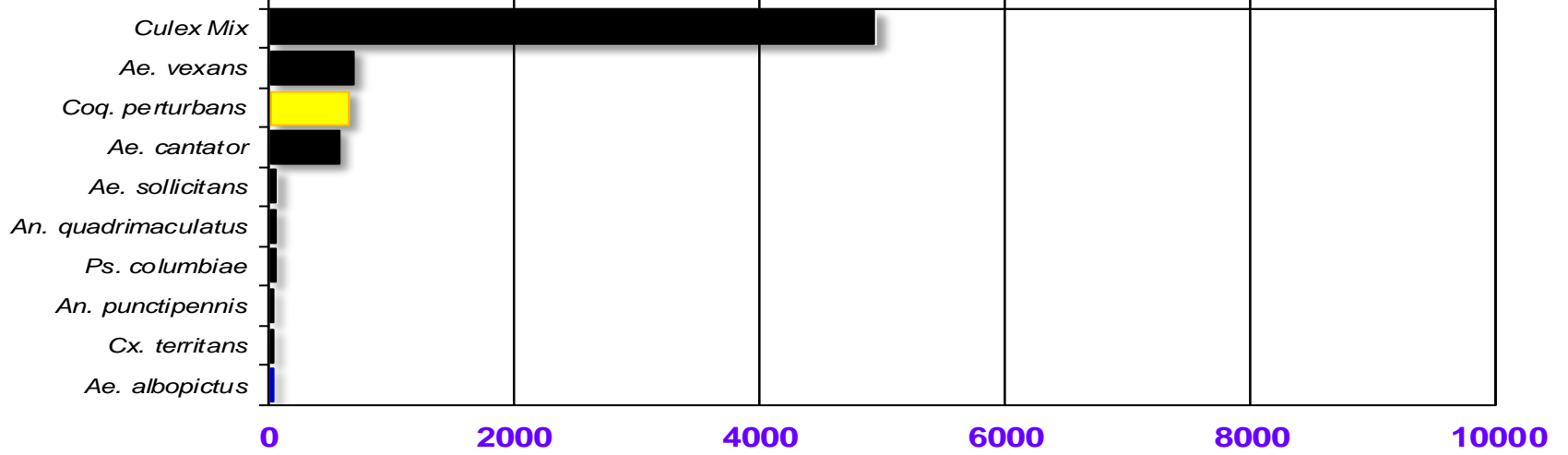
Delaware River Basin

Total # mosquitoes



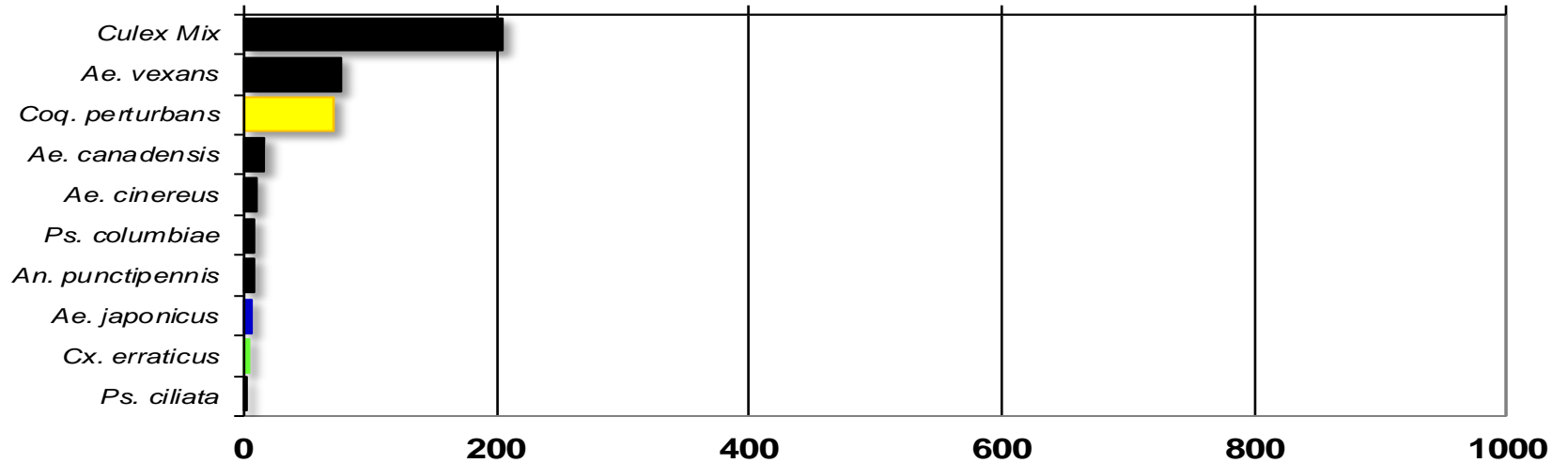
New York Metropolitan

Total # mosquitoes



North Central Rural

Total # mosquitoes



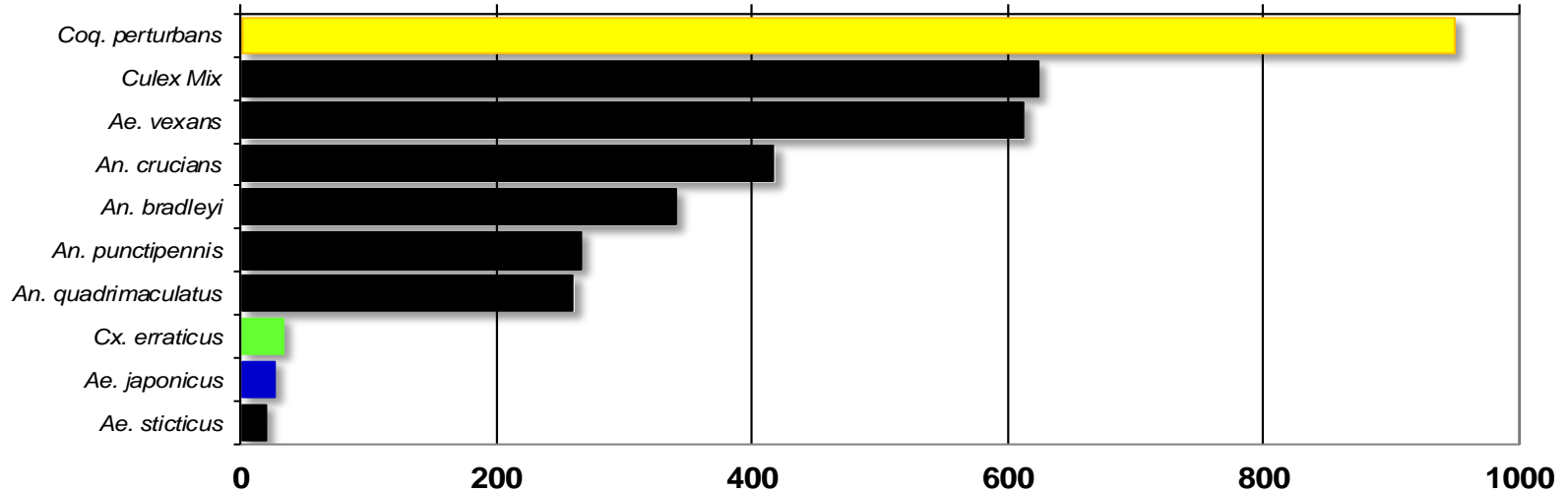
Northwest Rural

Total # mosquitoes



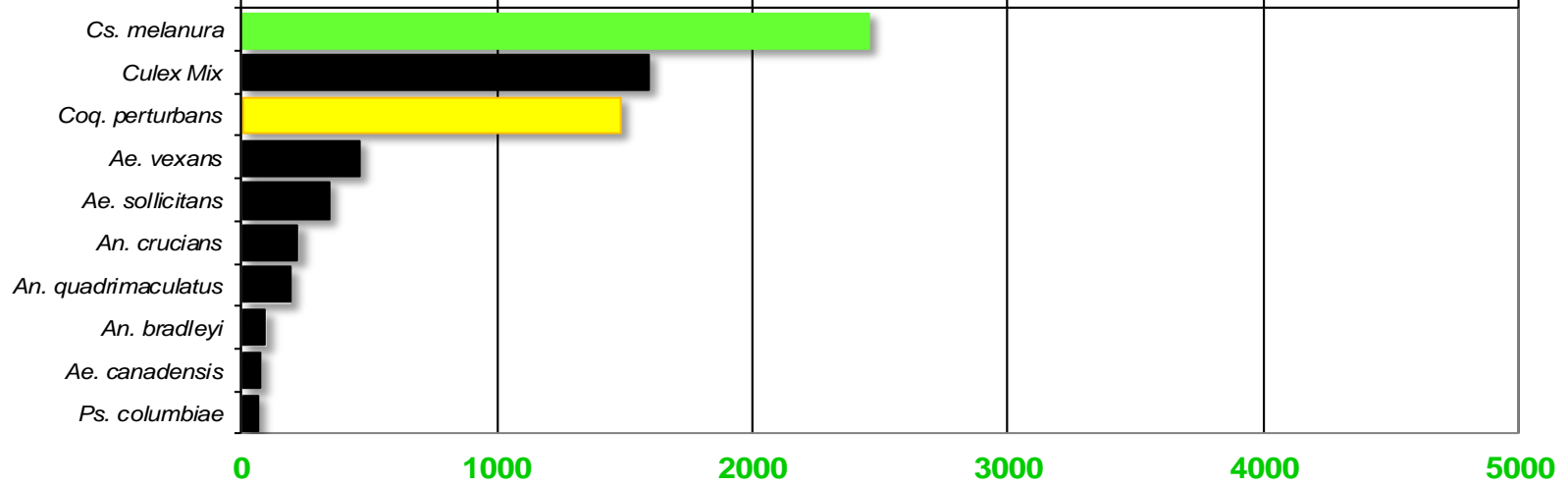
Philadelphia Metropolitan

Total # mosquitoes



Pinelands

Total # mosquitoes



Suburban Corridor

Total # mosquitoes

